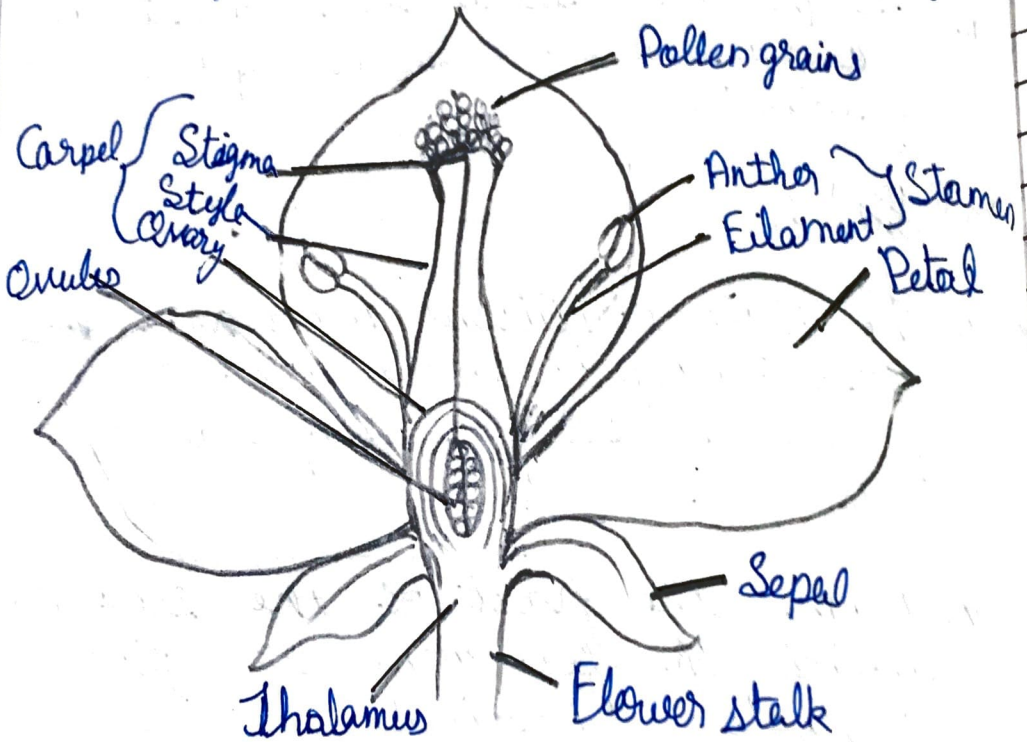


3) Ans) A flower is the most beautiful and colourful part of a plant which acts as a reproductive organ



Q) What are the three conditions necessary for the germination of seed?

Ans) Water, air and favourable temperature are the three conditions required.

Q) State the location of the following in a flower.

a) Sepal: Sepals are the green outermost part of a flower.

b) Petals: This forms the second inner whorl. Petals are the large, fragrant and brightly coloured parts of the flower.

c) Anthers: It is located in the third whorl of the flower. The filament of the stamen bears the anther at its tip.

d) Stigma: It is located in the fourth and the innermost whorl of the flower. The style bears the stigma at its tip.

Flower

9) Ans

