

Homework

DT- 28/08/2021

Biology
Solutions

1. (a) Sclerenchyma
2. (a) Muscles to bone
3. (c) blood and lymph
4. (a) Angiosperms and Gymnosperms
5. (d) Alveoli
6. (a) Rohu
7. (a) Starch
8. (a) ATP
9. (b) Adipose tissue
10. (d) Potassium permanganate
11. (b) Contractile vacuole
12. (b) Contractile vacuole
13. (c) Binary fission

Question-2

- A1. Complex Permanent Tissue
2. Thoxax
 3. Fungi
 4. Stomata
 5. Bryophyta

- B.
1. Tube feet
 3. Spore
 4. Nephridia
 5. Guard cell

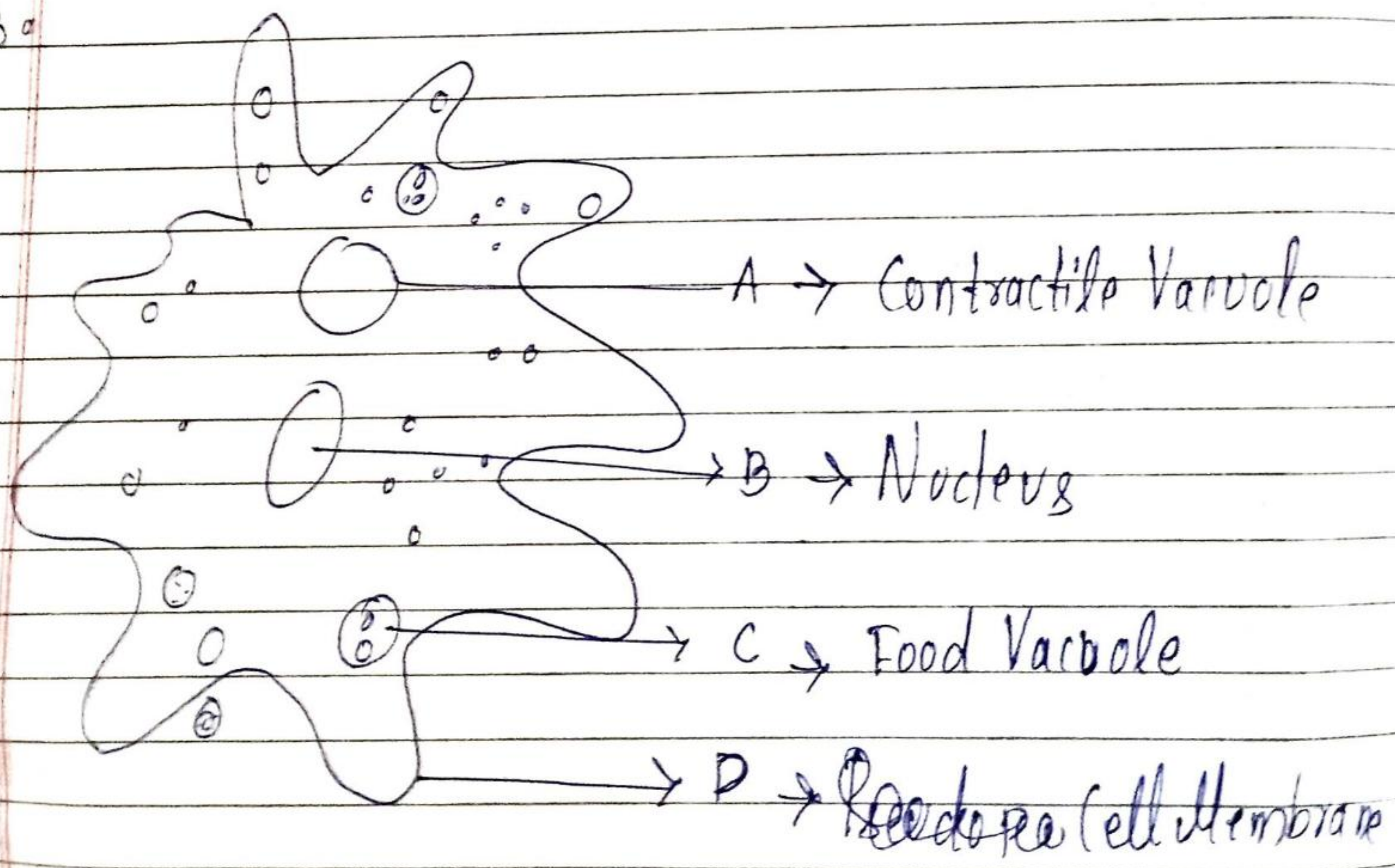
Question-3

A. Match the following

Column A	Column B
Sponge	Reptilia
Snail	Amphibia
Butterfly	Protozoa
Toad	Mollusca
Lizard	Arthropoda

B. The structure is thalloid - Chlorophyll present in the thylakoid membrane absorbs energy from the sunlight and also formation of ATP.

Q. 4 B.



5.		Aerobic respiration	Aerobic respiration
Oxygen Requirement	It utilizes	Oxygen	It doesn't utilize oxygen
End Products	$CO_2 + H_2O +$ Energy	(38 ATP)	Ethanol + $CO_2 +$ Energy (2 ATP)
Energy Released	More Energy is released	(38 ATP)	Less Energy is released (2 ATP)

6.A	Respiration	Photosynthesis
1)	Food is Broken down	1) Food is Synthesized
2)	Occurs during day and night	2) Occurs only during day
3)	Occurs in Plants & Animal	3) Occurs both only in Green Plants
4)	End Product is:- Aerobic - $CO_2 + H_2O +$ Energy Anaerobic - $CO_2 +$ Ethanol + Energy	End Product is - $C_6H_{12}O_6$ and O_2

B. 2. Tissue : A Group of Cells Perform together as a specific function

Mono cotyledon: The cotyledon containing only one or one seed leaf in their seeds.

Breathing: The Inhaling of O_2 and Exhaling of CO_2 is known as Breathing.

7. (i) Arthropoda :-

(i) Body has jointed legs

(ii) Body is divided into three regions - head, thorax, and abdomen. Ex - Crab, Butterfly etc.

(ii) Annelida :- Body com.

(i) Body composed of rings or segments.

(ii) They have moist body wall through which they breathe. They have special organs for excretion called nephridia.

Ex - Earthworm, Leech

(iii) Mollusca :- Soft body which is not segmented

(ii) Body enclosed in a hard shell

Ex - Snail, slug, Octopus

(iv) B. 1. Yeast it is a unicellular organism fungus, it is important in bakeries as it is used in the making of bread. It is also important in the breweries for making alcohol

2.

Xylem

Phloem

1)

1 living + 3 dead cell

2) 3 living + 1 dead cell

2)

It carries water and minerals

2) It carries food

3)

It carries from Root to leaves

3) It carries from leaves to different part

u)

Unidirectional upward

u) ~~Bi~~ Multi direction.

5. B.

Odd one out

5.

Xylem, Parenchyma, Meristem, Ligament