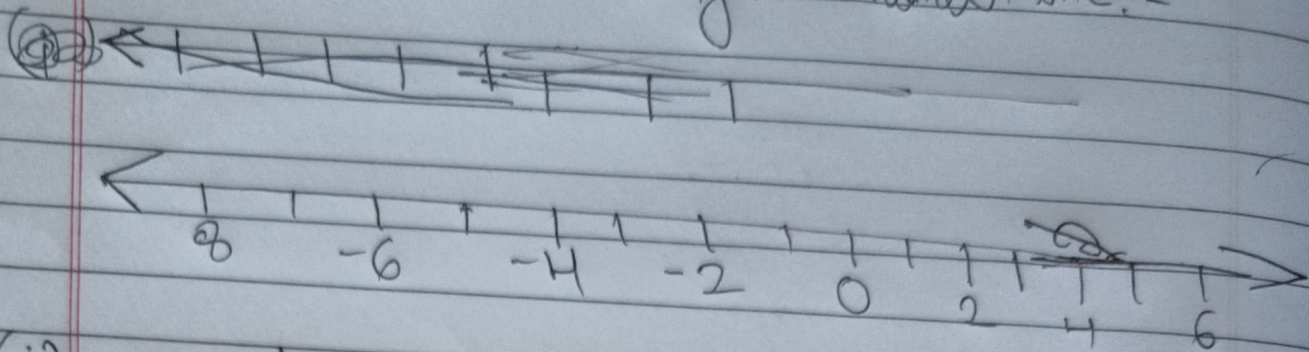


Ex-7(A)

(1) Fill in the blanks, using the number line:-



- (i) An integer on the given number line, is greater than every number on its left.
- (ii) An integer on the given number line is greater than every number to its left.
- (iii) 2 is greater than -4 implies 2 is to the right of -4.
- (iv) -3 is less than 2 and 3 is greater than -2.
- (v) -4 is less than -8 and 4 is less than 8.
- (vi) 5 is greater than 2 and -5 is less than 2.
- (vii) -6 is less than 3 and the opposite of -6 is greater than opposite of 3.
- (viii) 8 is greater than -5 and -8 is less than -2.

(2)

(i) $-15, -23$

Ans - $-15 > -23$

(ii) $-12, -15$

Ans - $-15 > -12 < 15$

(iii) $0, 8$

Ans - $0 < 8$

(iv) $0, -3$

Ans - ~~$0 > -3$~~ $0 > -3$

(3)

(i) $0, -6$

Ans - -6

(ii) ~~$-12, 15$~~ $2, -3$

Ans - -3

(iii) ~~$0, 8$~~ $15, -51$

Ans - -51

(iv) ~~$0, 8$~~ $13, 0$

Ans - 0