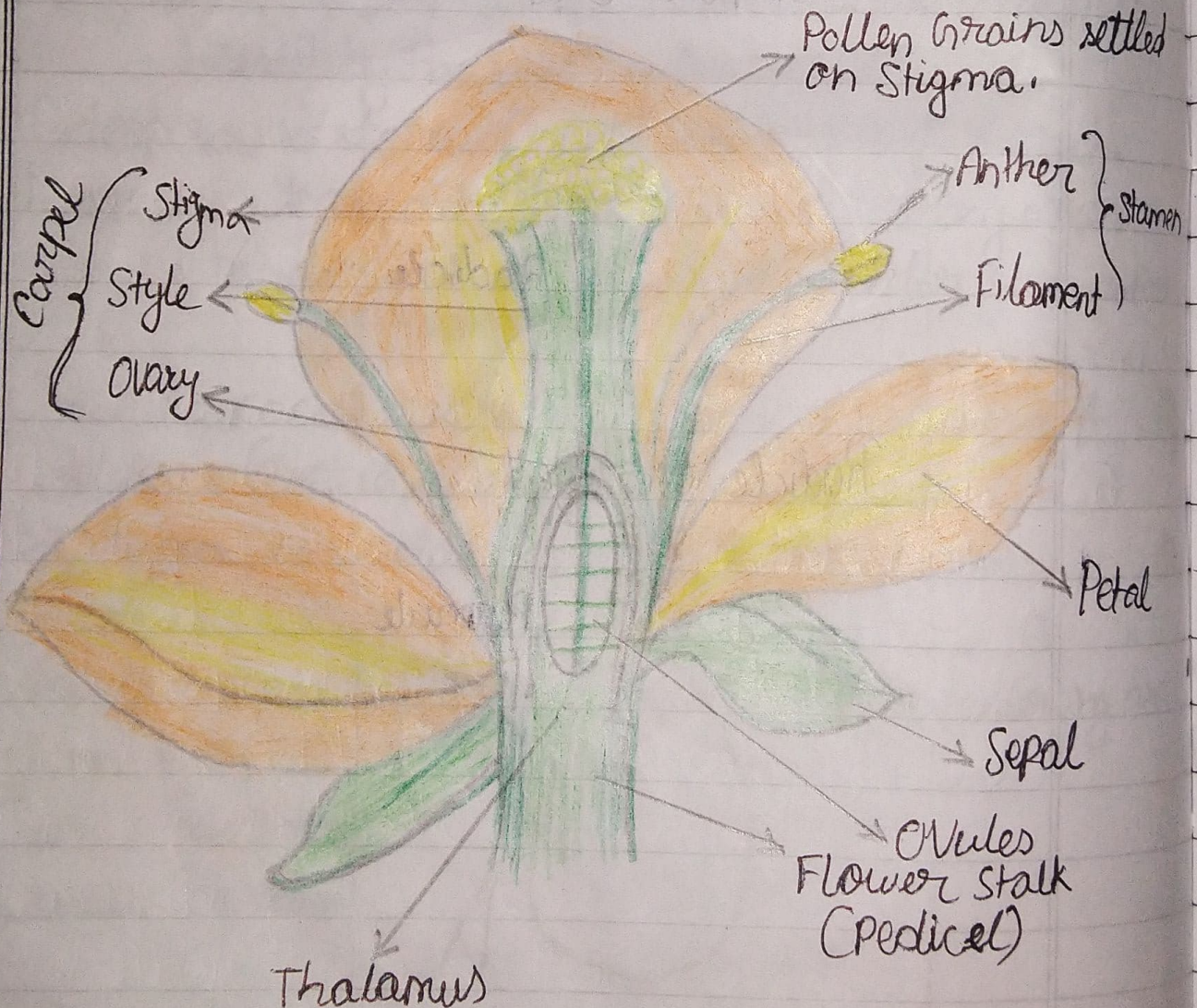


Long answer questions:

3. What is a flower? Draw a typical flower and label its different parts.

Ans- A flower is the most beautiful and colourful part of a plant which serves as a reproductive organ.



8. State the location of the following in a flower.

- a) Sepals: Sepals are the green outermost part of a flower.
- b) Petals: This forms the second inner whorl. Petals are large, fragrant and brightly coloured parts of the flower.
- c) Anthers: It is located in the third whorl of the flower. The filament of the stamen bears the anther at its tip.
- d) Stigma: It is located in the fourth and the innermost whorl of the flower. The style bears the stigma at its tip.

9. Given below is a diagram of a typical flower. Label the parts marked by guidelines.

