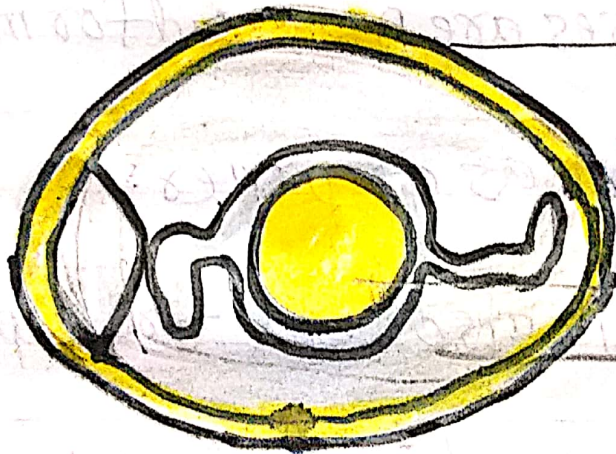


Internal structure

of

an Egg



→ Egg shell

→ Yolk

→ Albumen

A. 1) The process of producing young ones is called a. reproduction ✓

2) The yellow portion inside an egg is the a. Yolk ✓

3) The young one of a frog is called a. tadpole ✓

4) Shedding of old skin by animals is called a. moulting

5) Which of the following is the larva of a housefly?

ans- maggot

B. a) zidra - lizard b) nskæ - snake c) ifhs - fish

d) uxlet - turtle