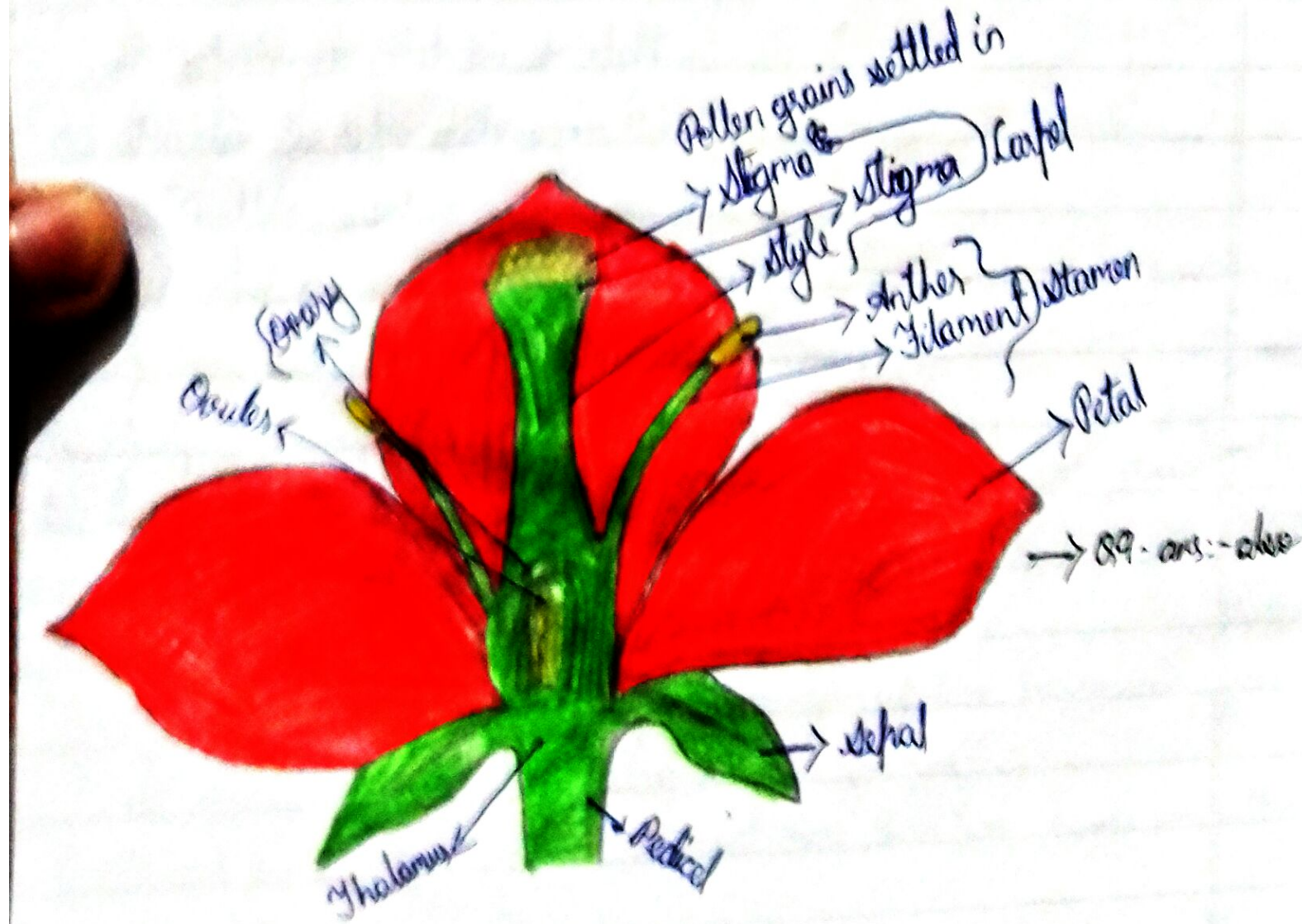


Q. What is a flower? Draw a typical flower and label its different parts? →

Ans. - A flower is the most beautiful and colourful part of a plant which serves as a reproductive organ.



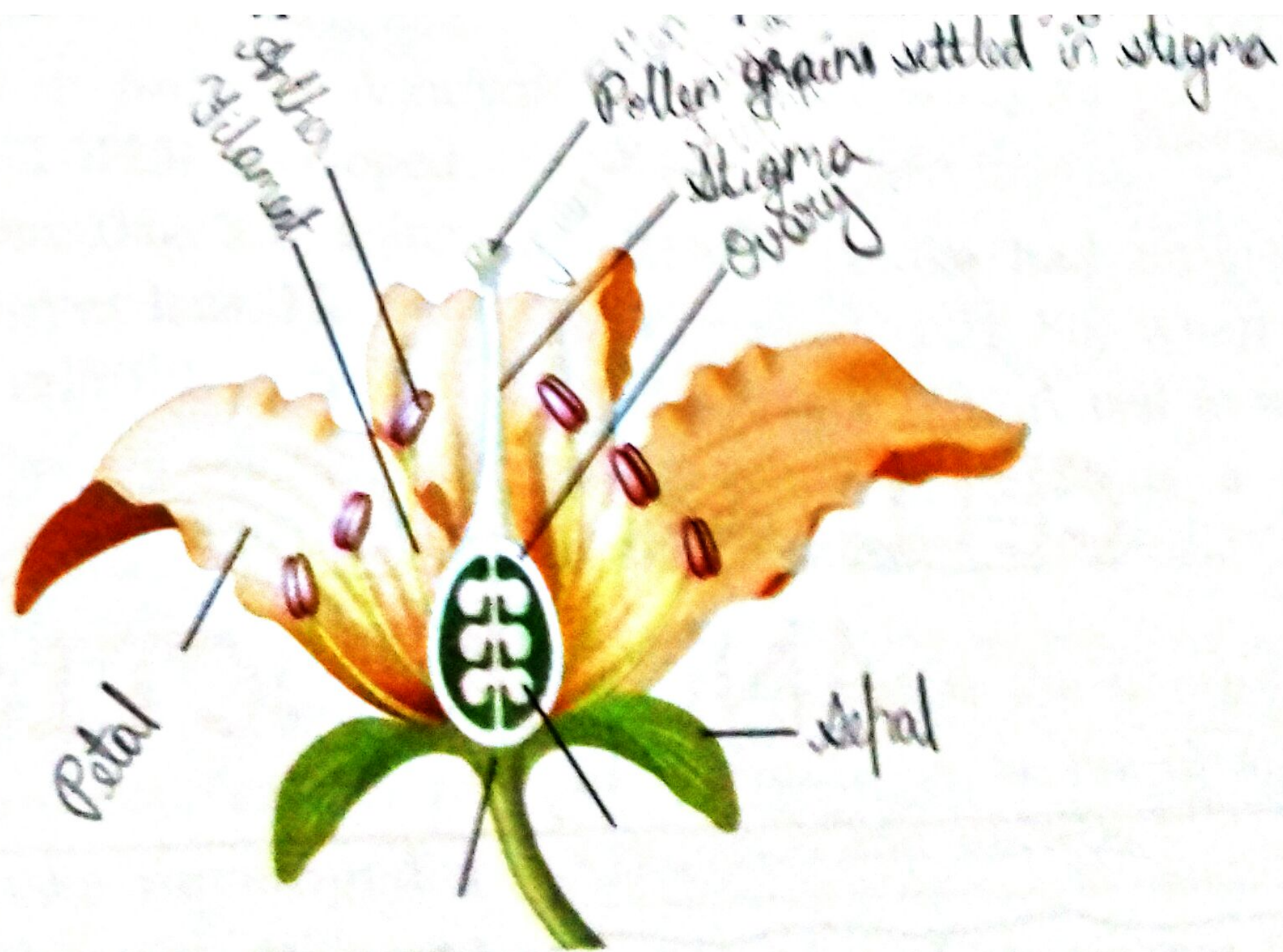
Q8 - State the location of the following in a flower?

a) Sepals - The green coloured part of ~~the~~ <sup>the</sup> plant.

b) Petals - This forms the second inner whorl. Petals are the large, fragrant and the brightly coloured parts of the flower.

c) Anthers - It is located in the whorl of the flower. The filament of the stamen bears the anther at its tip.

d) Stigma - It is located in the fourth and the innermost whorl of the flower. The style bears the stigma at its tip.



Anther  
Filament

Pollen grains settled in stigma

Stigma  
Ovary

Petal

Sepal