

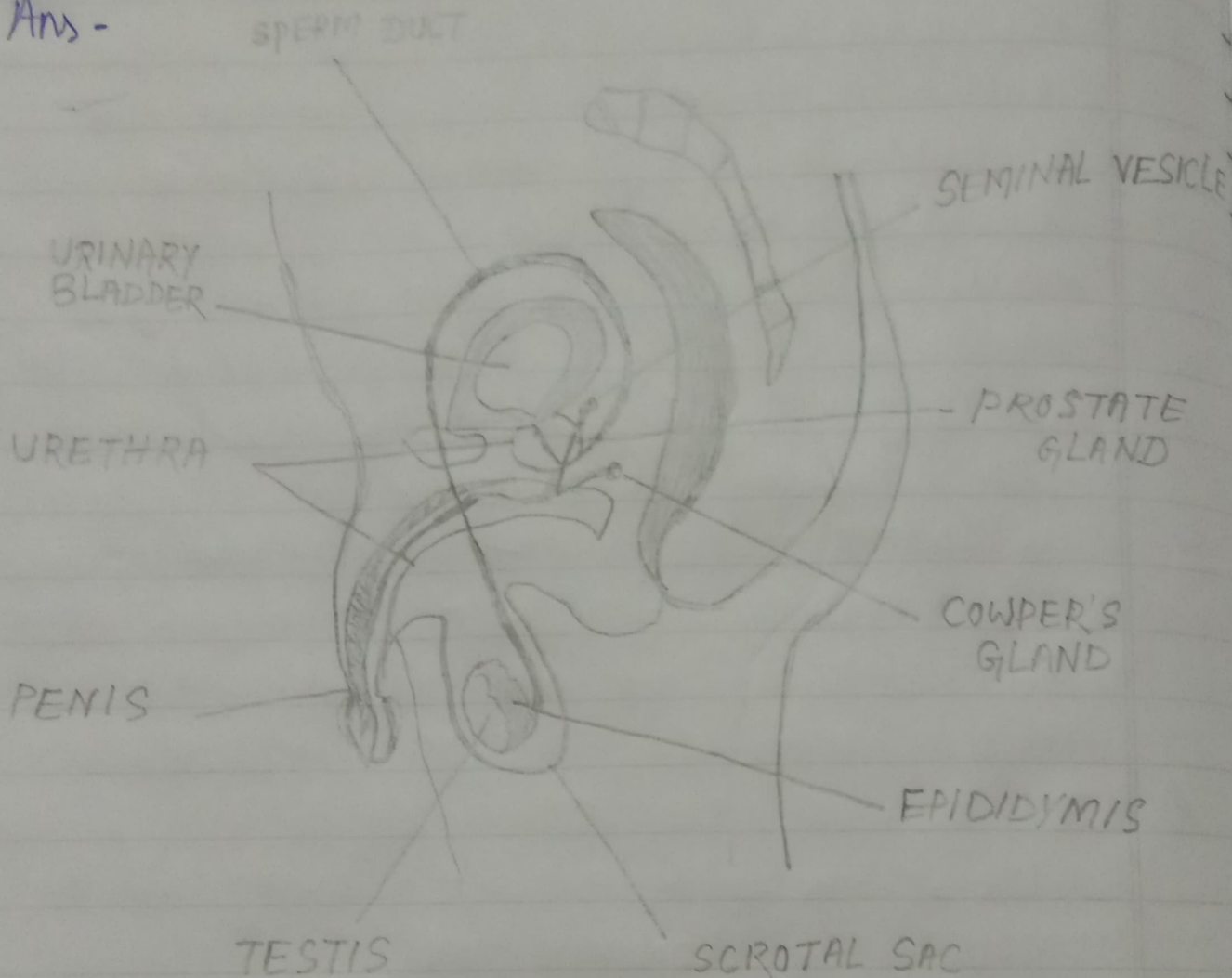
Reproduction in Humans

①. Define gametes.

Ans - Male and females produce special types of reproductive cells i.e. sperms and eggs respectively, collectively known as gametes.

②. Draw the diagram of male reproductive system.

Ans -



③ - Differentiate between primary and secondary ~~accessory~~ accessory sexual parts.

Ans - Primary reproductive organs

* The primary reproductive organs produce sex cells.

* The primary reproductive

Accessory reproductive organs

* The accessory reproductive organs help in the transfer and meeting of two kinds of

organs do not help in the development of the baby .

* Ex - Testes in males and ovaries in females .

sex cells leading to fertilisation.

* The ~~course~~ accessory organs help in the growth and development of egg up to the birth of a baby.

* Ex - Penis in males, uterus, vagina in female.