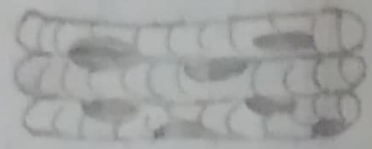


→ Homework →

① Draw the diagram of three different types of muscles. Write two characteristics of each type.

Ans → i) Skeletal muscle →



* It is striated, tubular, and multi-nucleated.

* Usually attached to skeleton.

ii) Smooth muscle →



* Non-striated, spindle-shaped, and uninucleated.

* Usually covering wall of internal organs.

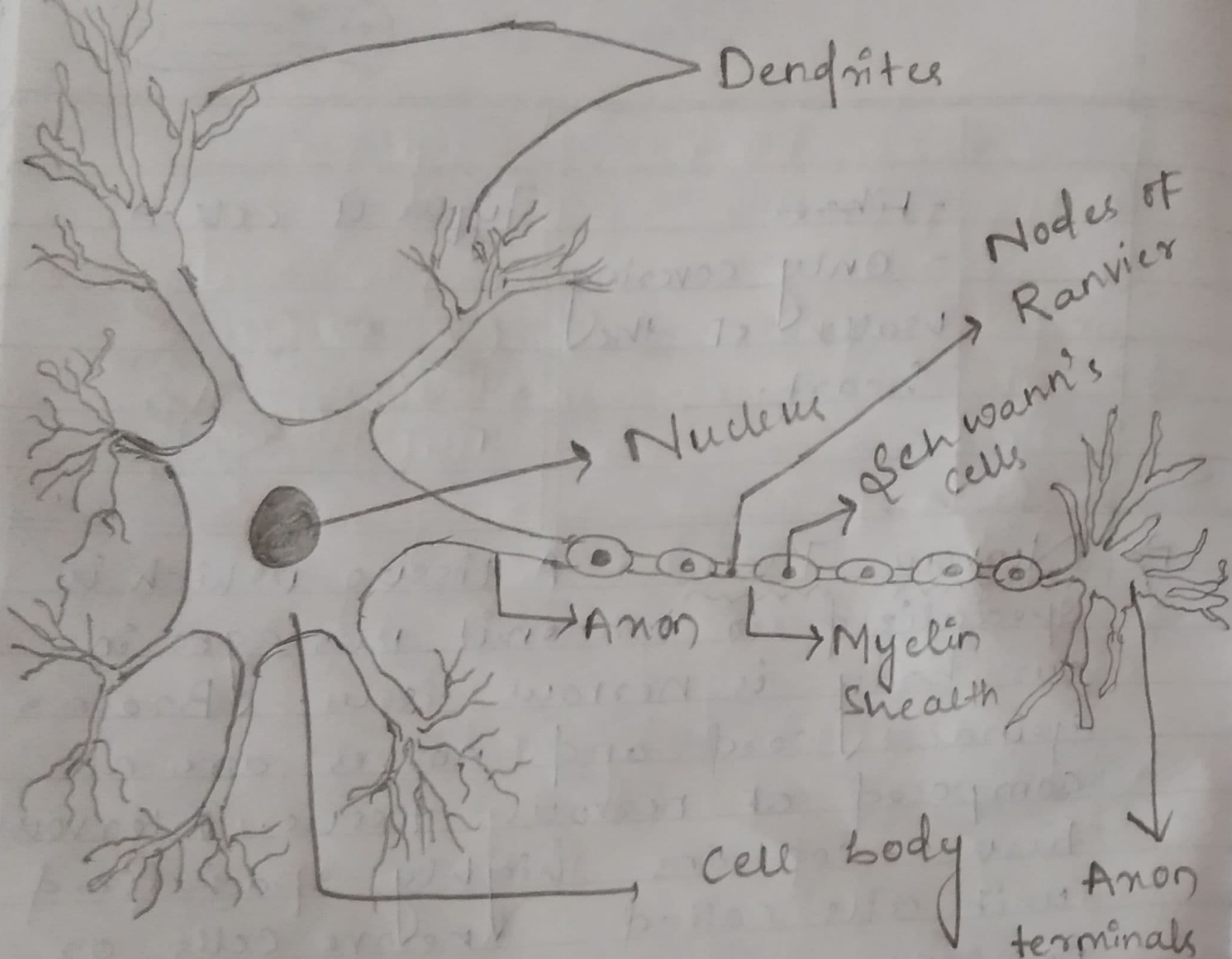
iii) Cardiac muscle →



* Striated, branched and uninucleated.

* Only covering walls of heart.

② Draw the diagram of nervous tissue.



Neuron