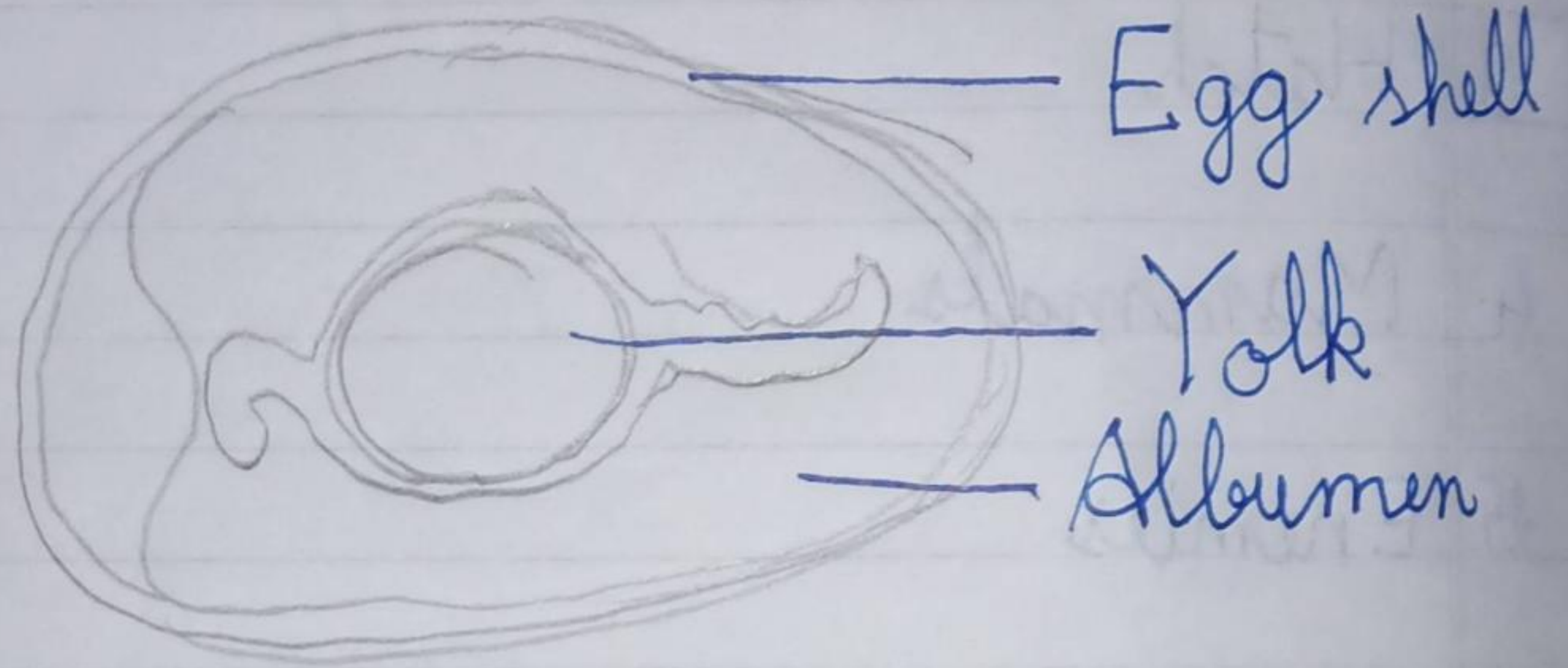


H.W

Draw the internal structure of an egg



H.W

A. Tick the ~~cell~~ correct answer.

1. The process of ~~producing~~ producing young ones is called.

a) Reproduction (b) Digestion (c) Photosynthesis.

2. The yellow portion inside an egg is the

a) Yolk (b) Albumen (c) Lemon

3. The young one of a frog is called

a) Tadpole (b) Larva (c) Maggot.

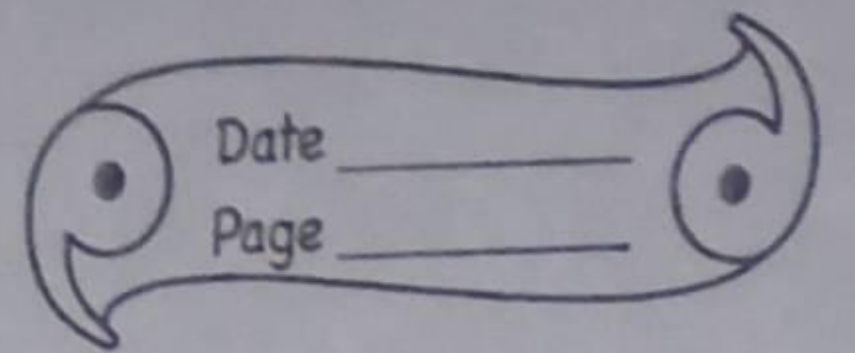
4. Shedding of old skin by animals is called.

a) Moulting (b) Changing (c) Reproduction

5. Which one of the following is the larva of a housefly

a) Maggot (b) Nymph (c) Pupa.

H.W



B. Unscramble the letters to get the names of four egg-laying animals.

- a) Zildra - Lizard (b) Nskae - Snake (c) Ifhi - Fish
d) Uirtlet - Turtle