

Worksheet

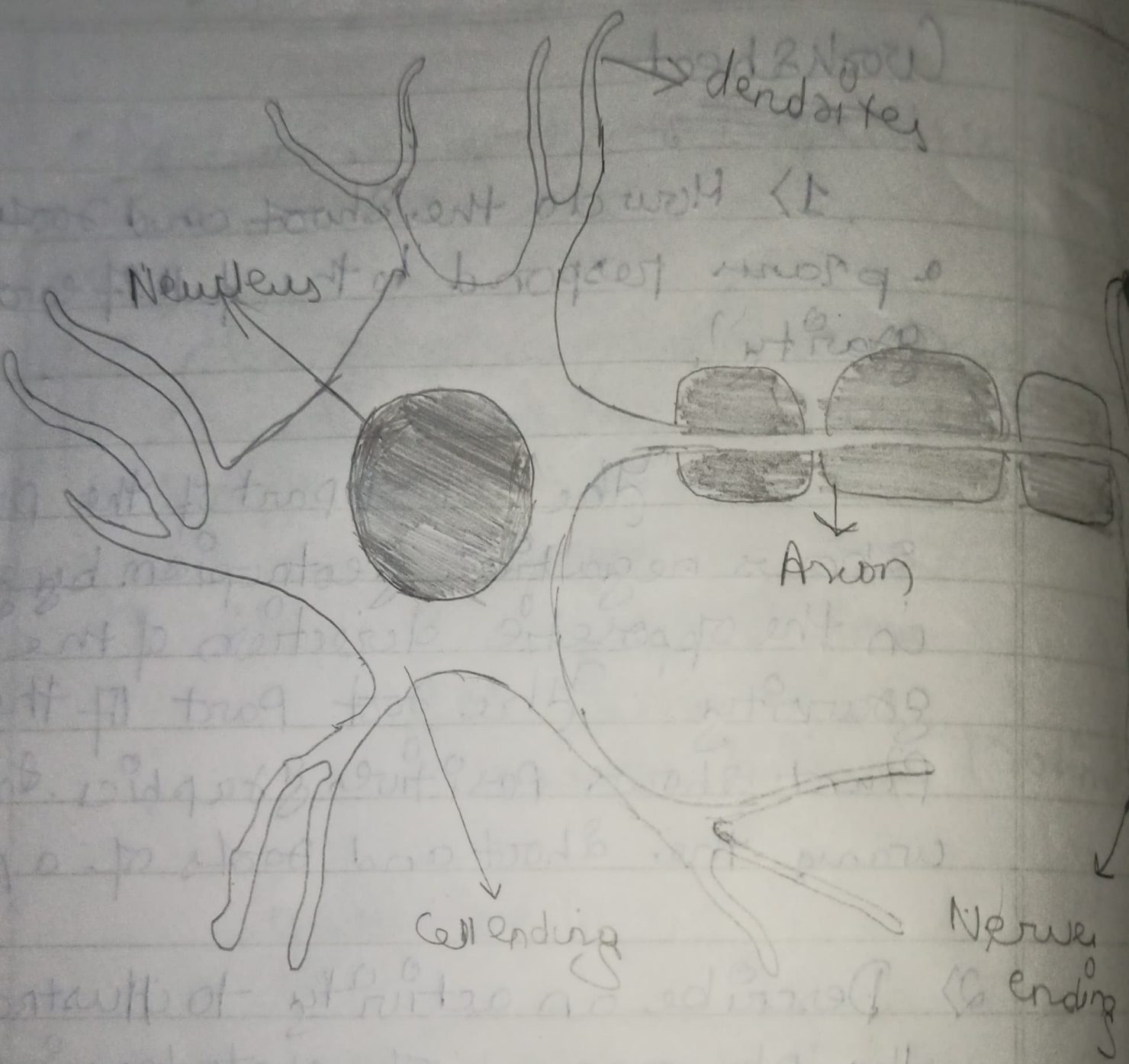
bt-15.7 21

Q

Draw a well-labeled diagram of neurons?

2

In the white page



Dendrites

Nucleus

Axon

Cell ending

Nerve ending



Q2) Trace the path way of impulse condition in your body

Ans = The electrical impulse travels from the sinus node to the anti Ventricle node

The Path way contain Artery? lungs > veins > heart > organs

The blood in artery goes to heart for a pump then goes to organs then it get deoxygenated then goes to the veins and then again to lungs to be oxygenated

Q3) ~~why~~ what do you mean by reflex action? what is its significant

Ans - Reflex action is a form of significant of a sensory organs results in the activity of some organs without the



Its significance is it's an involuntary response of effectors to the stimulus. It helps us in protecting us from stimulus.

Q4) Classify neurons on the basis of neurites.

Ans) The different types are:

- unipolar
- bipolar
- multipolar
- pseudounipolar