

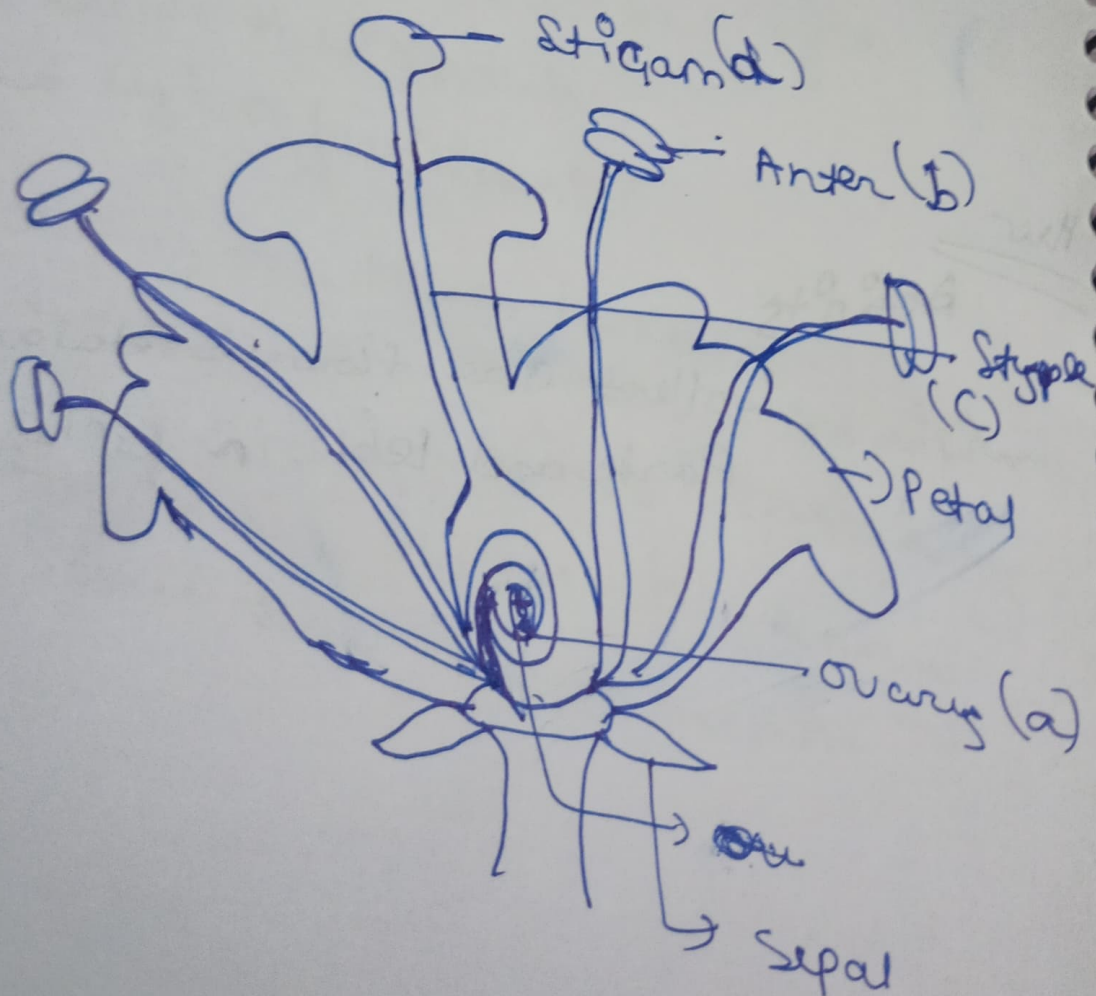
Worksheet How do organisms reproduce

1) Define the term unisexual and bisexual
(one example of each)

no. unisexual is the plant whose flowers contain either stamens or carpels but not both. Example: Papaya, water melon.

Bisexual is the plant whose flowers contain both stamens and carpels. Example Hibiscus, Mustard.

2) Draw a longitudinal section of a flower and label the following parts!



3) b) unisexual

4) a) Sepal

~~4) a)~~

5) d) continue the species generation
after generation

6) a) Androecium