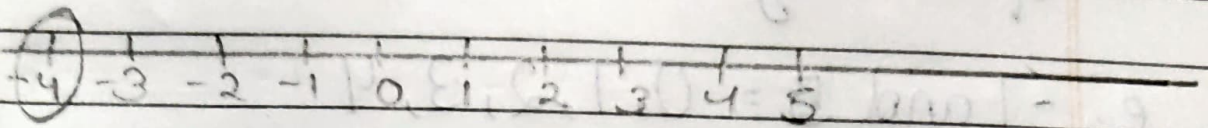


Hw  
25.11.21

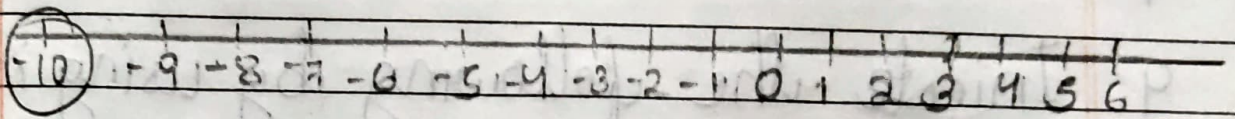
Ex 14 (A)

6. Mark the following integers on a number line.

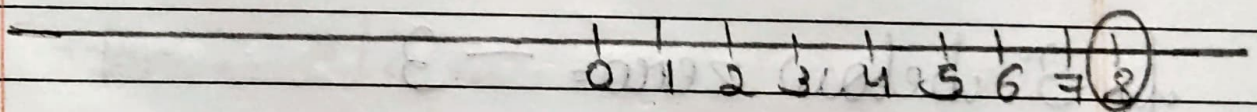
e. -4



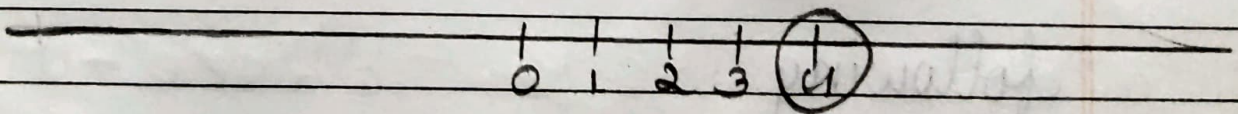
f. -10



g. 8



h. 4



7. How many integers are between the following?

a. 0 and -6 = 5 integers

f.  $-4$  and  $+4 = 7$  integers.

8. Write all integers between the following.

e.  $-1$  and  $5 = 0, 1, 2, 3, 4$

f.  $0$  and  $10 = 1, 2, 3, 4, 5, 6, 7, 8, 9$

9. Indicate the following by using integers.

e.  $22^\circ$  above zero  $= +22$

f.  $3^\circ$  below zero  $= -3$

10. Find in the opposite of each of the following.

e. A class of ₹ 500 = A profit of ₹ 500

f. Decrease in population = Increase in Population.

g. Crediting money in bank = Debiting money in bank.