

Solution

IRON STAND

← Burner

Cold Water

Frog Tap  
(Cold Water in)

CONDENSER

TO Sink (Cold Water Out)

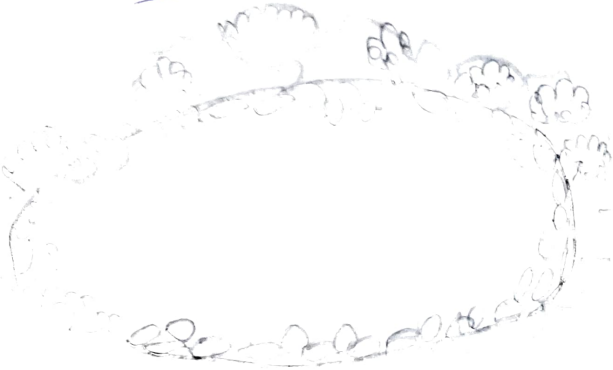
FLASK

Distilled Water

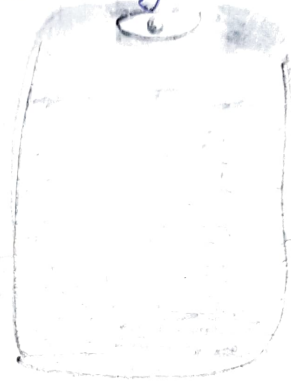
# Distillation Process

# Water Supply of town.

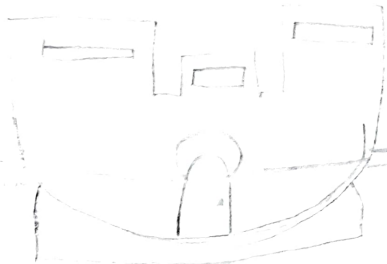
Water bodies



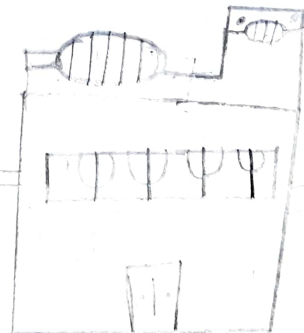
Water is collected  
in large Tanks.



Sedimentation is  
Done here.



After sedimentation water  
is filtered here.



Water is then  
Disinfected with chlorine gas.



Drinking water supplied to  
Home.