

⑩ Define Double Circulation?

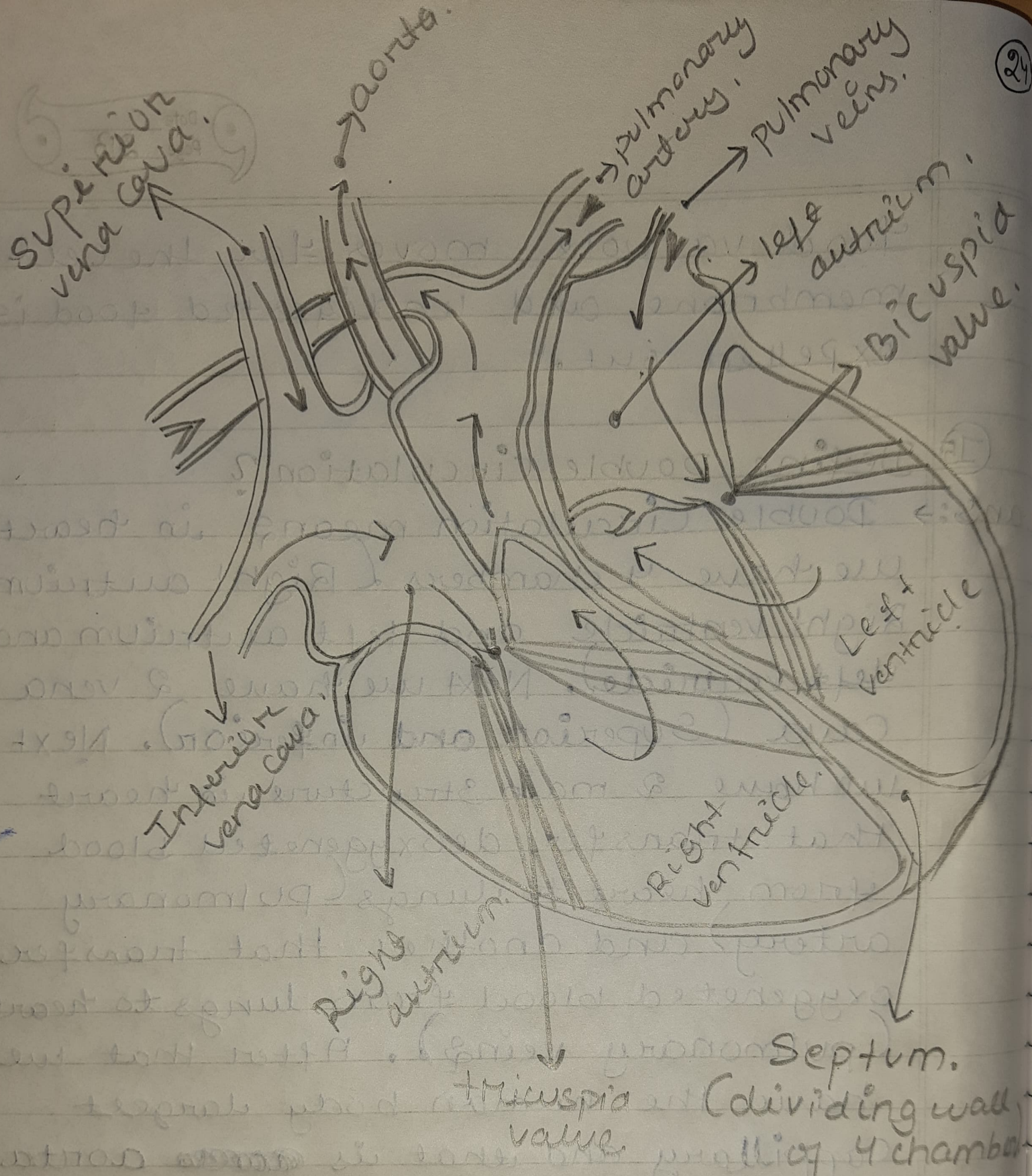
ans: ⇒ Double Circulation means in heart we have 4 chambers (Right atrium, Right ventricle and left atrium and left ventricle). Next we have 2 vena cava (Superior and inferior). Next we have 2 main structure in heart that transfer deoxygenated blood from heart to lungs (pulmonary artery) and another that transfer oxygenated blood from lungs to heart (pulmonary veins). After that we have the human body largest capillary and that is ~~the~~ aorta. Then two small gap between two right and left chambers that is (Tricuspid valve and Bicuspid valve).

⇒ First the deoxygenated blood will enter to right atrium through.



Superior and inferior vena cava, then that deoxygenated blood will go to right ventricle through tricuspid valve. The right ventricle will send that deoxygenated blood to pulmonary artery and that artery will send or transfer deoxygenated blood from heart to lungs. Then lungs will add oxygen to that blood and it will convert it to oxygenated blood. After that pulmonary vein we send that oxygenated blood from lungs to left atrium of the heart. Then that blood will pass through bicuspid valve and go to left ventricle. Then left ventricle will send that blood to the largest and that aorta will pass that oxygenated blood to different parts of our body.





Heart Diagram