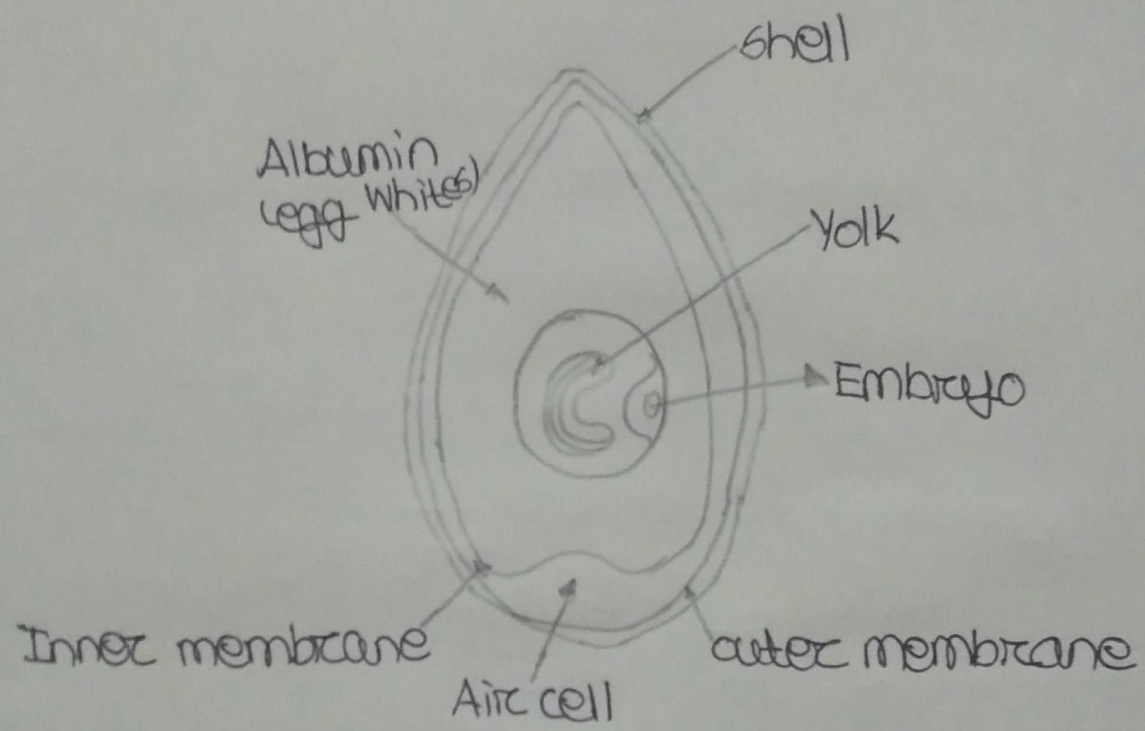


H.W.
23/12/2021

Draw the internal structure of an egg.



Let us answer.

A. Tick (✓) the correct answer.

1) The process of producing young ones is called

a) Reproduction

2) The yellow portion inside an egg is the

a) Yolk

3) The young one of a frog is called

a) Tadpole

4) Shedding of old skin by animals is called

a) Moulting

5) Which of the following is the larva of a housefly?

a) Maggot

B. Unscramble the letters to get the names of four egg-laying animals.

zildra - lizard

nskae - snake

ifhs - fish

wrtlet - turtle

C. Fill in the blanks with the correct words from the brackets.

1) Mammals (Mammals / Reptiles) take care of their babies for a long period of time.

2) Most birds build nests (nests / holes) to lay eggs.

3) The larva of a butterfly is called caterpillar. (maggot / caterpillar).

4) Reptiles like lizards and snakes (snakes / fishes) lay their eggs in holes in the ground.