

Review Questions

Multiple Choice Questions: -

①

a) i) Radicle

b) ii) Plumule

c) iii) Nalze

d) i) Epigeal

e) ii) Hypogeal

f) iv) Anther

g) i) stamens and Carpels

h) ii) Apple

i) iv) Cotyledons / Endosperm.

①

②

③

Short Answer Questions:

- ①
- 1) Testa: It is the outer exposed part of the seed.
 - 2) Plumule: It is located between the two cotyledons and develops into a shoot.
 - 3) Radicle: It is located between the two cotyledons and develops into a root.
 - 4) Micropyle: It absorbs and allows the entry of as much as water as required for germination.
 - 5) Cotyledon: It stores the food material which is used by the seedling for growth.

- ②
- a) Pea
 - b) Maize grain
 - c) Bean grain seed.
 - d) Bean seed

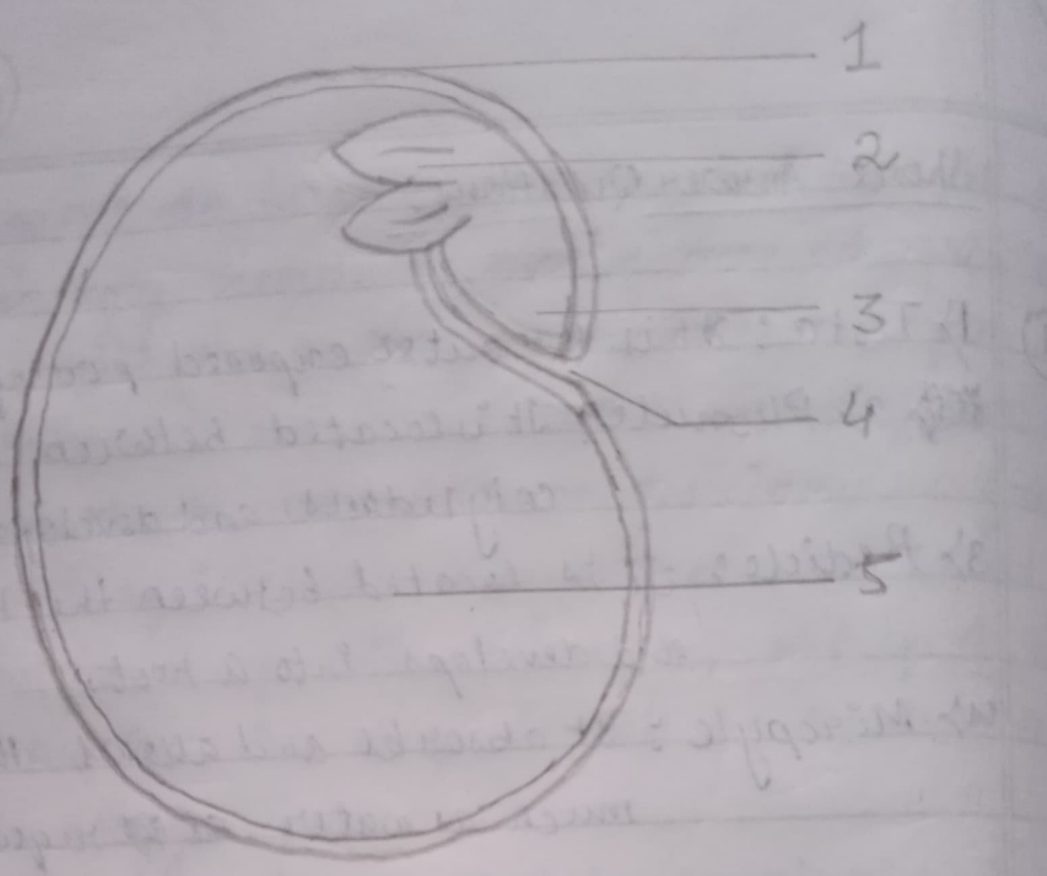
- ③ a) Radicle and Plumule -

The radicle develops into a root, while the plumule develops into a shoot.

- b) Hilum and micropyle -

Hilum is the inner concave side of the seed, where the seed was attached to the fruit wall.

1



- 1 - Testa
- 2 - Plumule
- 3 - Radicle
- 4 - Micropyle
- 5 - Cotyledon.

4) The two functions of fruit are -

- It protects the seed from the unfavourable environmental conditions.
- Fruits store food inside them.