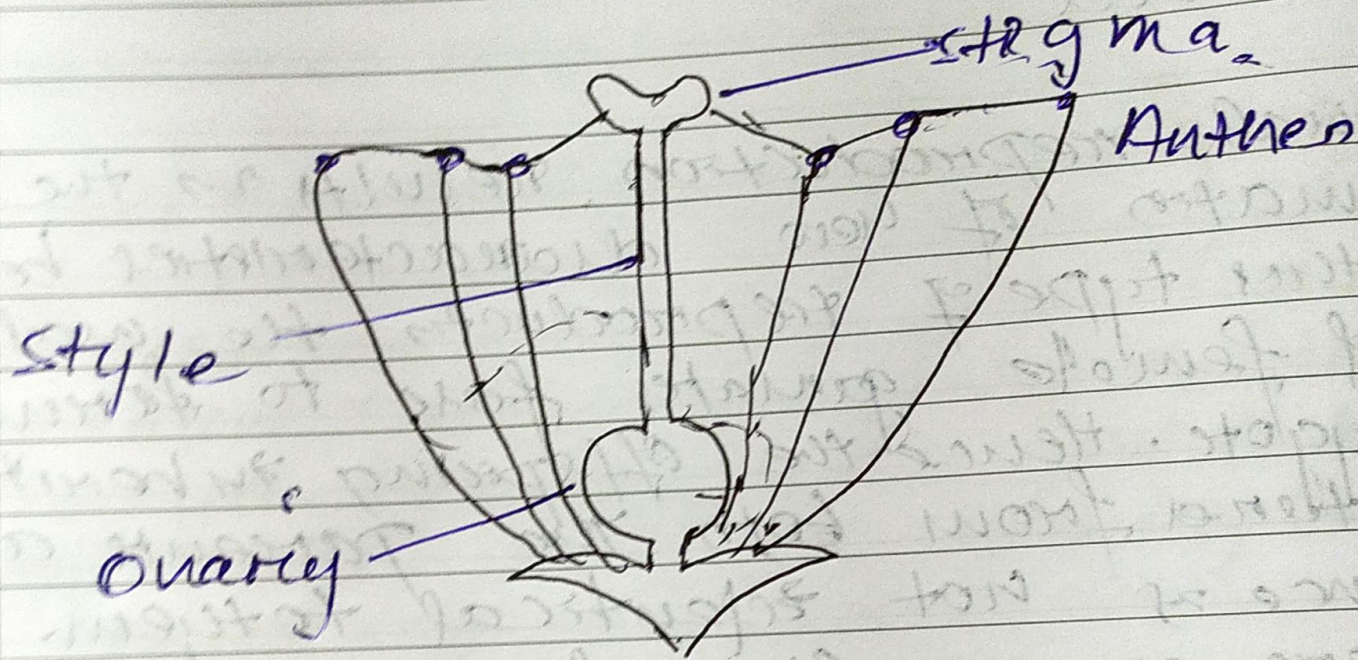


① Unisexual  $\rightarrow$  In the plant, unisexual flowers contain either stamens or carpels but not both. Ex - papaya, watermelon.

~~Sexual~~ Bisexual  $\rightarrow$  In the plant, unisexual flowers contain both stamens and carpels. Ex - Hibiscus, Mustard.

- 3) i) Anthers Ovary
- (ii) Style Anther
- (iii) Style
- (iv) stigma



3) i) Bisexual

(ii) Stamen +

(iii) continue the species generation  
cell or generation

(iv) Androecium