

Review Questions

1. a) i. Radicle

b) ii. Plumule

c) iii. Mair

d) i. Epigeal

e) ii. Hypogeal

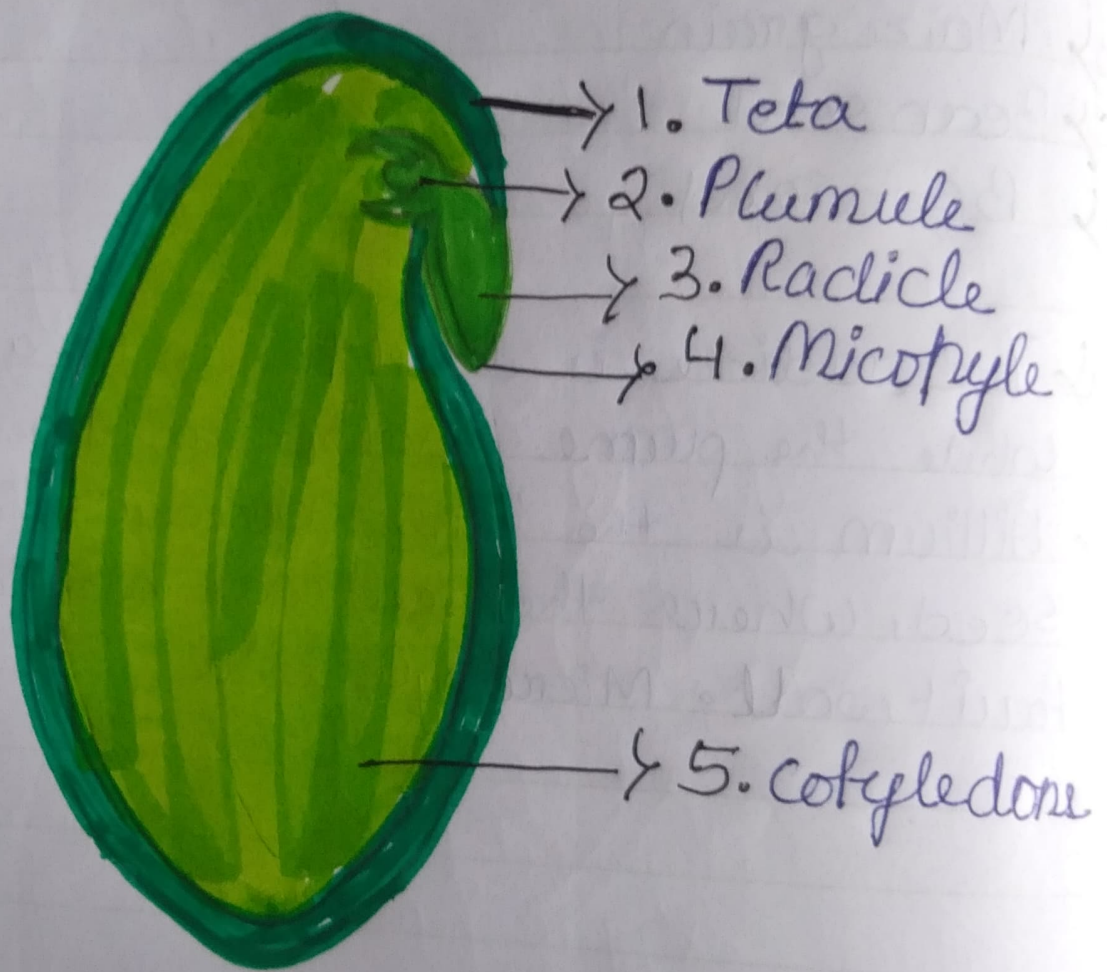
f) iv. Anther

g) i. Stamens and carpels

h) ii. Apple

i) iv. Cotyledons on endosperme.

→ Given below is a longitudinal section of a bean seed. Label the parts marked 1 to 5 and write their functions.



1 Short Answer Questions:-

1. Testa - It is the outer exposed part of the seed.
2. Plumule - It is located between the two cotyledons & develops into a shoot.
3. Radicle - It is located between the 2 cotyledons and develops into a root.
4. Microphyte - It is a ~~small~~ absorbent & allows the entry of as much as water as is required for germination.
5. Cotyledons - It stores the food material which is used by the seedling for growth.

2. Name the following:

(a) A seed which shows hypogeal germination.

Ans- Pea.

(b) A monocot seed.

Ans- Maize grain.

(c) A dicot seed.

Ans. Bean seed.

(d) A seed which shows epigeal germination.

Ans- Bean seed.