

long Answer Questions:

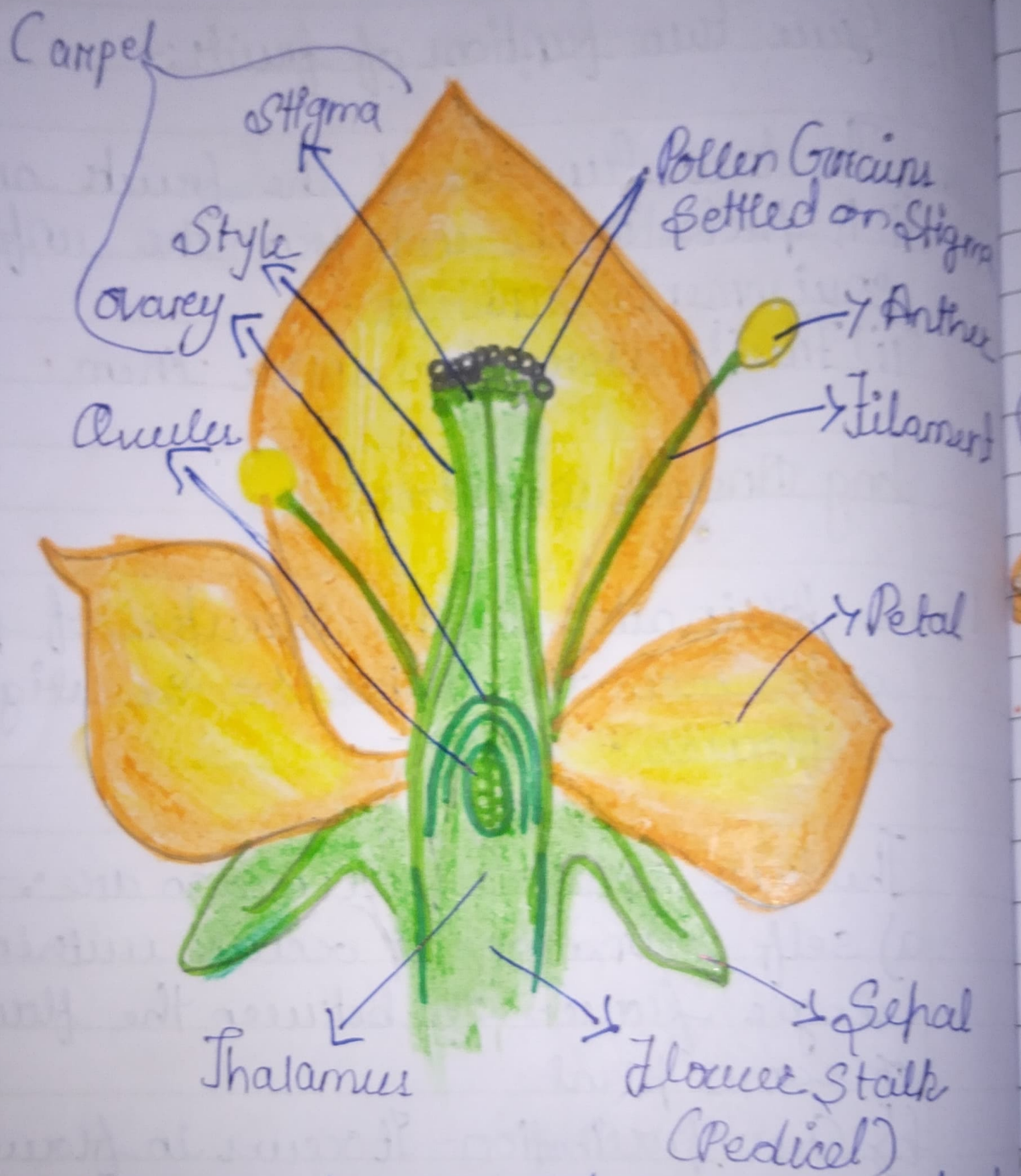
1. ans - Pollination is the transfer of pollen grain from the anther to the stigma of a flower.

The two types of pollination are:-

a) self pollination - It occurs within a single flower or between the flowers of same plant.

b) Cross pollination - It occurs in flowers of different plant of same kind.

3. ans - A flower is the most beautiful and colourful part of a plant which serves as a reproductive organ.



A Flower showing it's internal parts.

Q. ans -

