

HW  
13/07/21

Date 13/07/21  
Page 1

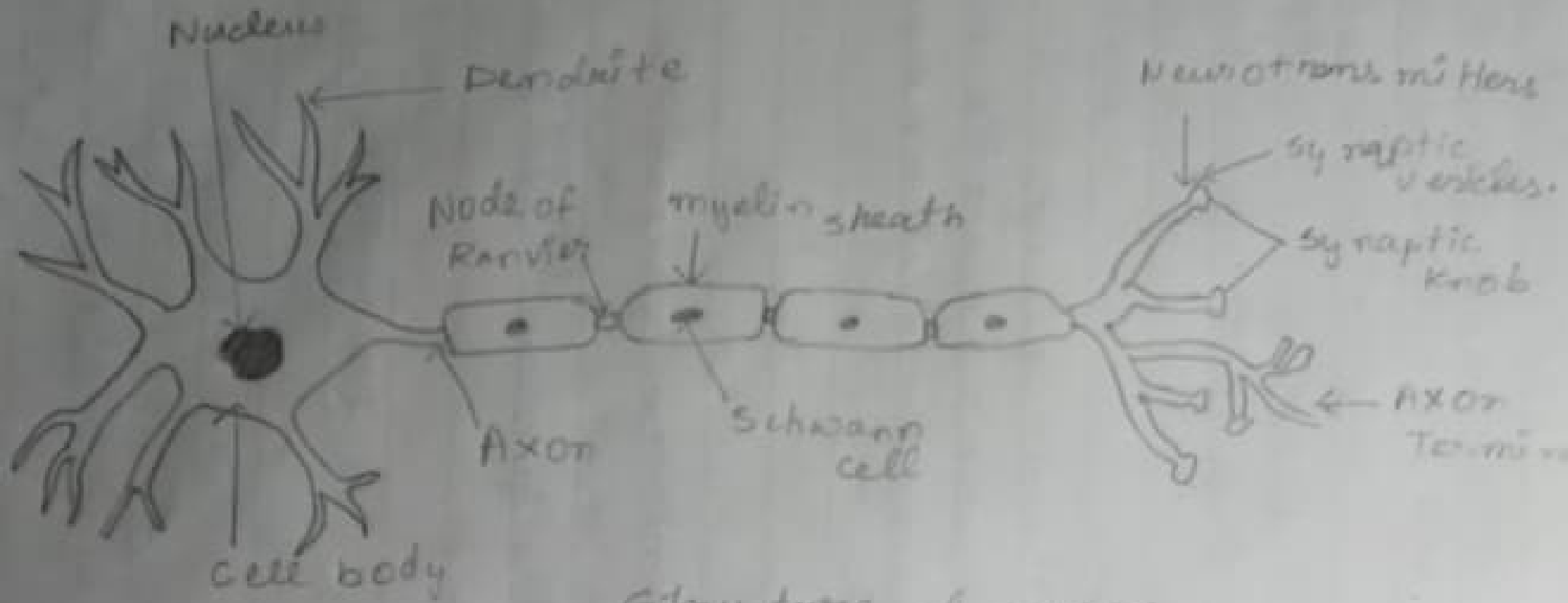
## CONTROL AND COORDINATION

2. Trace the pathway of impulse conduction in your body.

Ans- The pathway of impulse conduction in our body are:-

- i. Sensory receptor: (responds to a stimulus by producing a generator or receptor potential).
- ii. Sensory neuron: (axon conducts impulses from receptor to integrating center).
- iii. Integrating center: (one or more regions within the CNS that relay impulses from sensory to motor neurons).
- iv. Motor neuron: (axon conducts impulses from integrating center to effector).
- v. Effector: (muscle or gland that responds to motor nerve impulses).

1. Draw a well-labelled diagram of neurons.



Structure of neuron

3. What do you mean by reflex action?  
What is its significance?

Ans- Reflex action is a rapid automatic response to a stimulus which is not under the voluntary control of the brain or the spontaneous reaction to a stimuli is called reflex action.

\* It helps us in protecting us from any stimulus which may harm us.

4. Classify neurons on the basis of neurites.

Ans- Neurons are classified on the basis of neurites into two types :-

\* Dendrites (afferent)

\* Axon (efferent)

