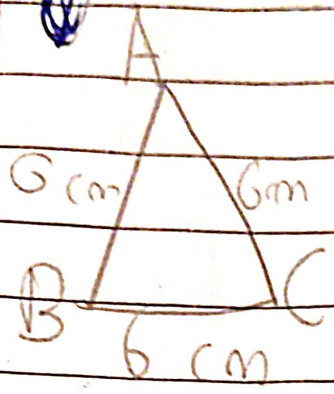


OHW
05.12.21

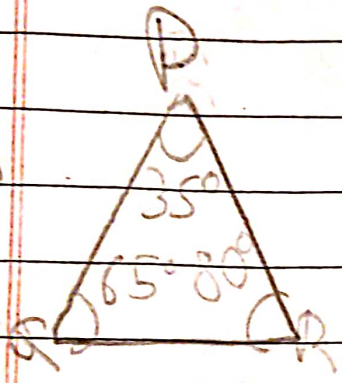
Ex 15 B

1



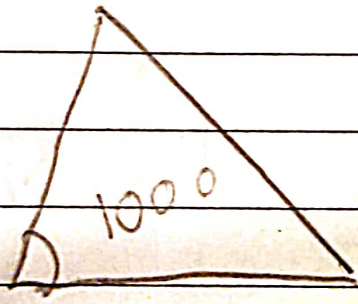
Equilateral triangle

2



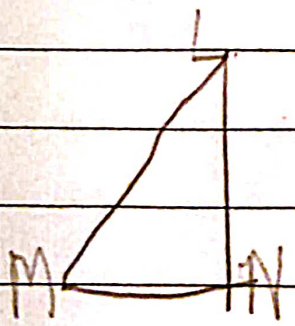
Acute triangle

3

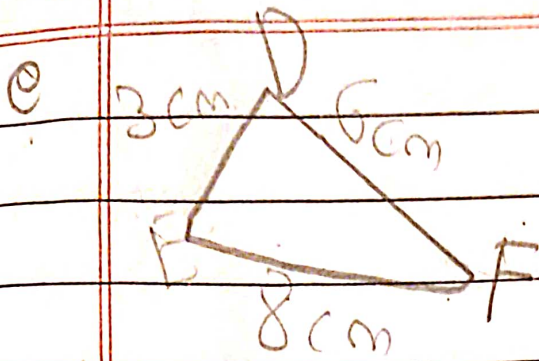


Obtuse triangle

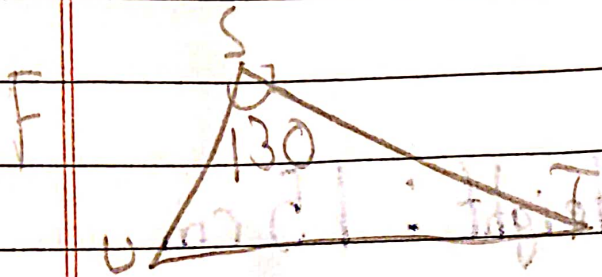
4



Right angle triangle

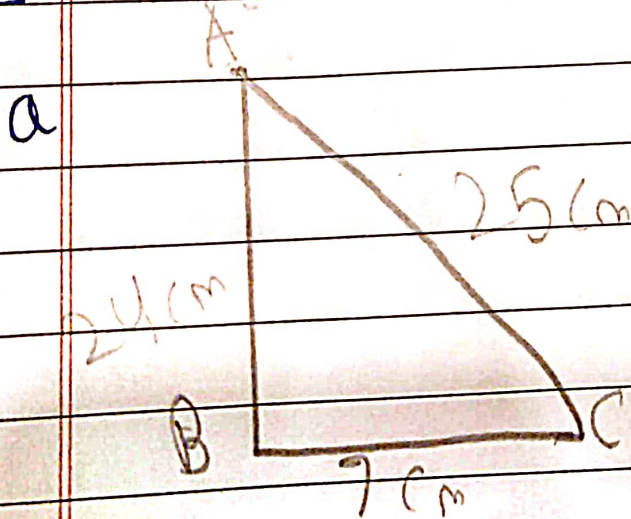


Scalene triangle



obtuse triangle

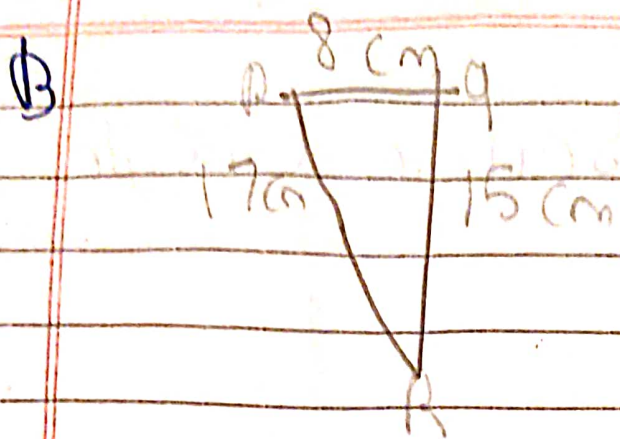
2. $Area = \frac{1}{2} \times b \times h =$



Base: 7 cm Height: 24 cm

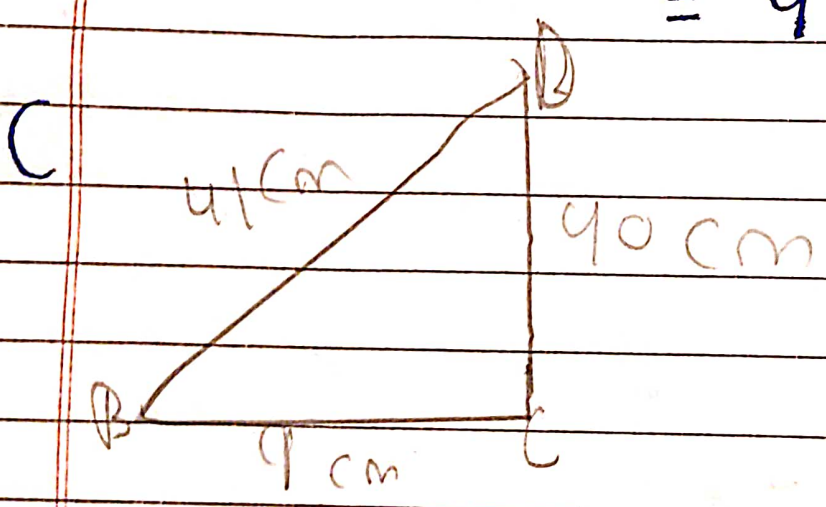
Area: $\frac{1}{2} \times 7 \times 24 \text{ cm}^2 = 12 \times 7 = 84$

$84 =$



Base: 8 cm Height: 15 cm

Area: $\frac{1}{2} \times 8 \times 15 \text{ cm}^2$
 $= 4 \times 15 = 60 \text{ cm}^2$



Base: 9 cm Height: 40 cm

Area = $\frac{1}{2} \times 9 \times 40 \text{ cm}^2$
 $= 9 \times 20 \text{ cm}^2 = 180$