




## H/w

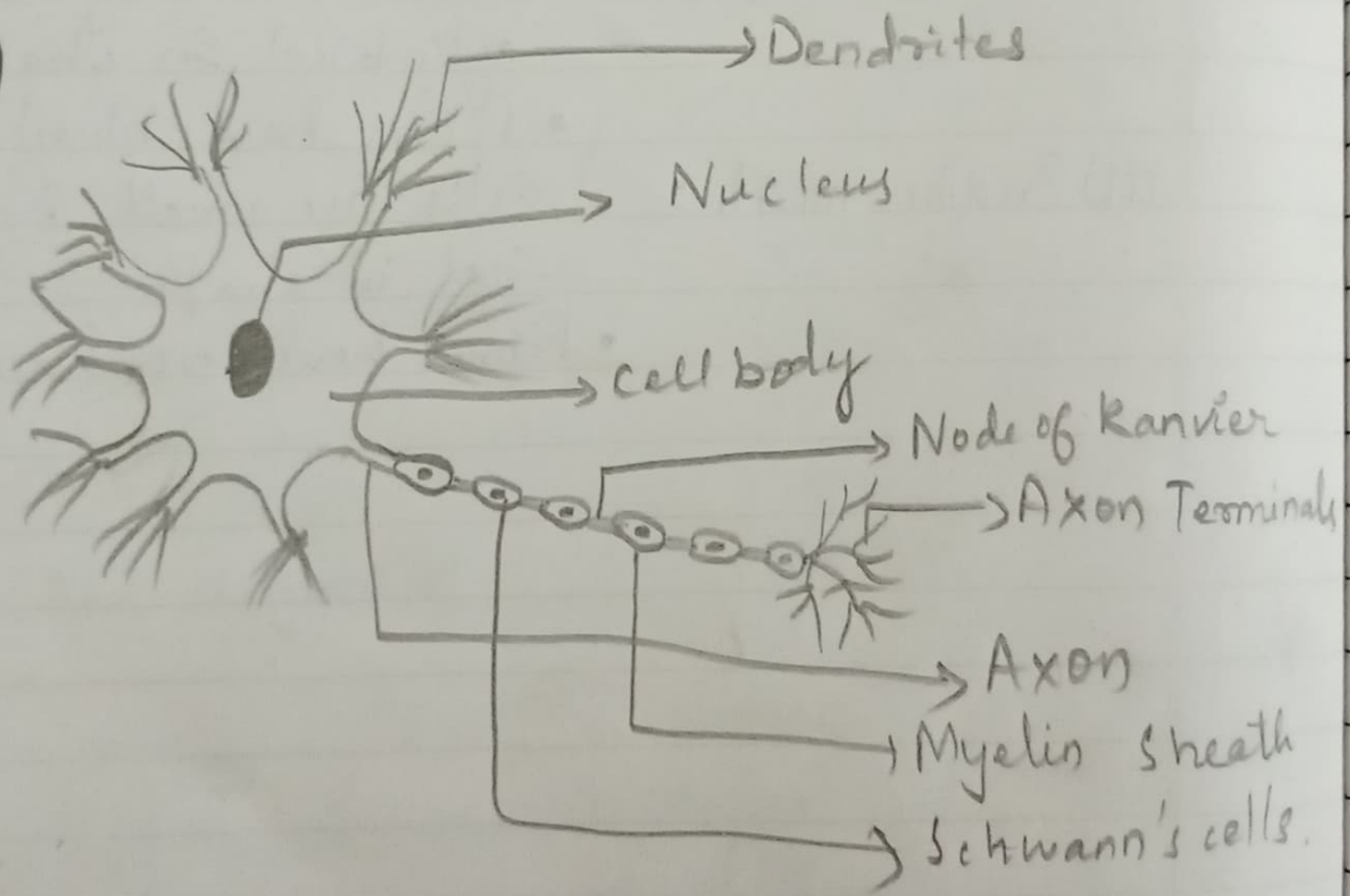
- 1) Characteristics of 3 types of muscle. ~~est~~ { 2 each }
- (Ans) i) Smooth muscle :-
- Cells are elongated & spindle shaped.
  - Fibres have pointed ends.
- ii) Skeletal muscle :-
- Cells are long & cylindrical in shape.
  - Fibres have blunt ends.
- iii) Cardiac muscle :-
- Cells are small & cylindrical in shape.
  - Fibres have broad ends.

i)  → Cardiac muscle cell.

ii)  → skeletal muscle cell.

iii)  → Smooth muscle cell.

2)



Nerve Tissue