

H/W  
H/W

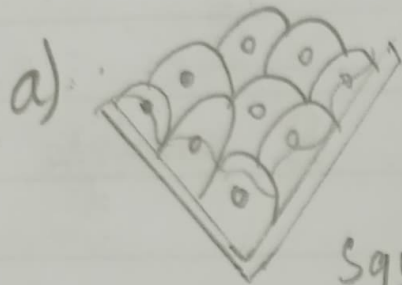
1) Functions of

i) Squamous epithelium - ~~to~~ This tissue protects the body. (skin tissue)

ii) Columnar ciliated epithelium:-  $\rightarrow$  It facilitates movement across the epithelial barrier.

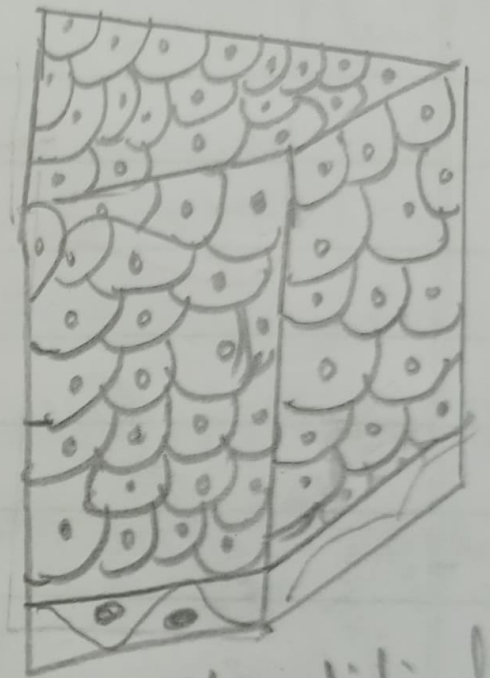
iii) ~~not~~ Stratified epithelium:-  $\rightarrow$  <sup>Due to</sup> ~~many~~ Many layers it prevents wear & tear of the tissue.

iv) Cuboidal:-  $\rightarrow$  helps in secretion & absorption.



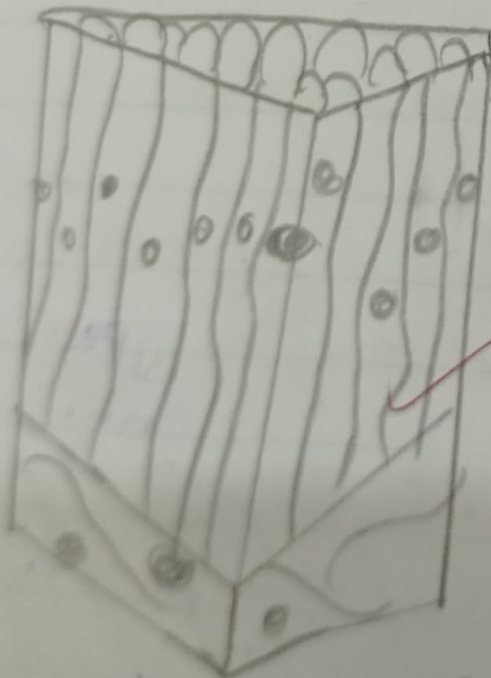
Squamous.

b)



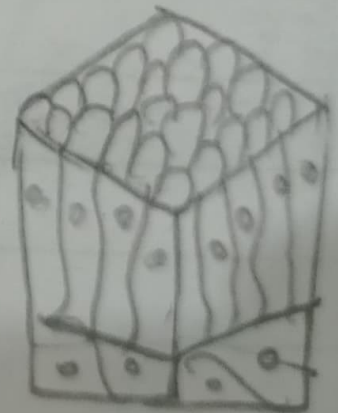
Stratified  
Squamous.

c)




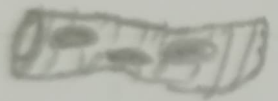
columnar ciliated

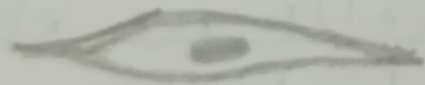
d)



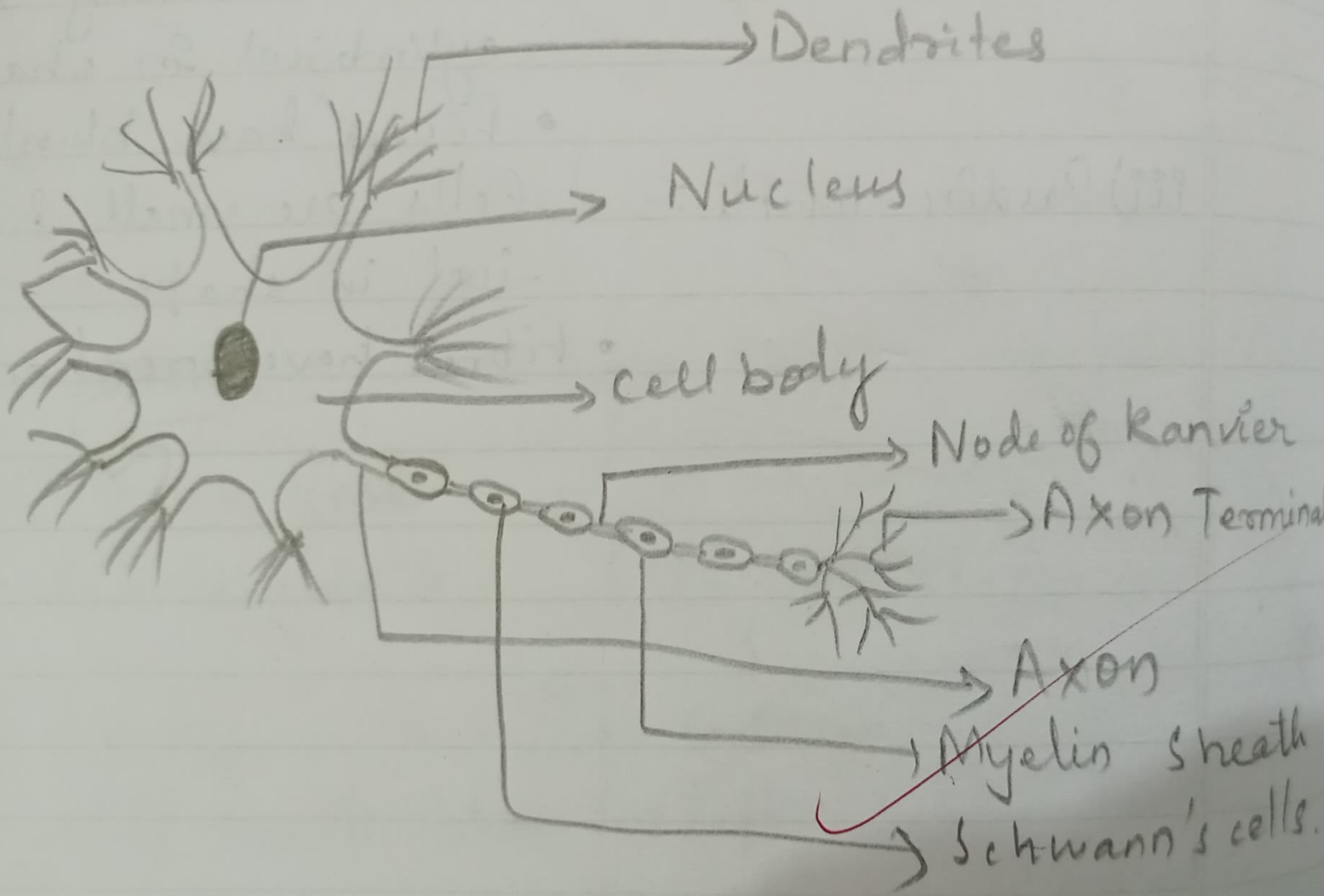
Bas  
28.09.2020

i)  → Cardiac muscle cell.

ii)  → skeletal muscle cell.

iii)  → Smooth muscle cell.

2)



Nerve Tissue

2) why nervous tissue are longer in size than other tissue?

Ans) Cells of nervous tissue are highly specialised for being stimulated & then transmitting the stimulus very rapidly from one place to another within the ~~soo~~ body. Usually each neuron has a single long part called axon which may be upto a meter long. So nervous tissue are longer in size than other tissue.