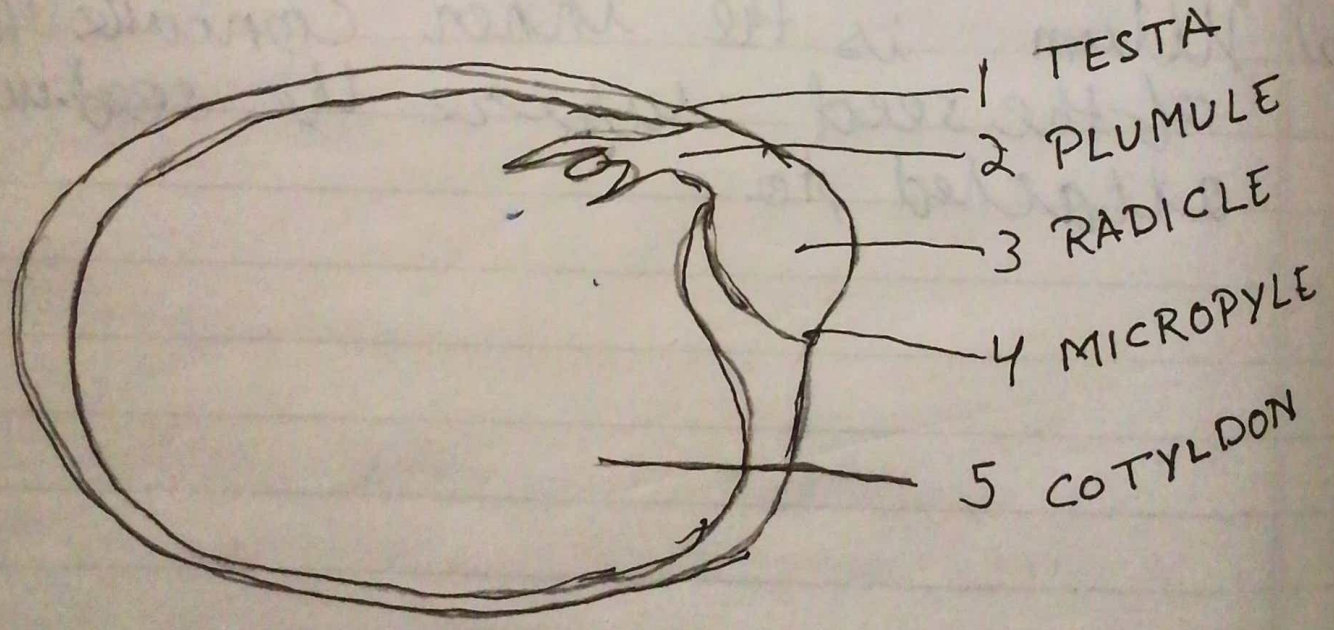


- 1a. (i) Radicle
- b. (ii) Plumule
- c. (iii) Maize
- d. (i) Epigeal
- e. (ii) Hypogeal
- f. (iv) Anther
- g. (i) Stamens and carpels
- h. (ii) Apple
- i. (iv) Cotyledons or endosperms

Short Answer Questions

1.



- 1 Testa : It is the outer exposed part of the seed.
- 2 Plumule : It is located between the two.

cotyledons and develops into a shoot.

3. Radicle: It is located between the two cotyledons and develops into a root.

4. Micropyle: It absorbs and allows the entry of as much as water as is required for germination.

5. Cotyledon: It stores the food material which is used by the seedling for growth.

2. a. A seed which shows hypogeal germination.
—

b. ~~A monocot~~ A monocot seed. — Maize grain

c. A dicot seed — Bean seed

d. A seed which shows epigeal germination
— Bean seed.