

13

Define the term unisexual and bisexual giving one example of each.

Ans

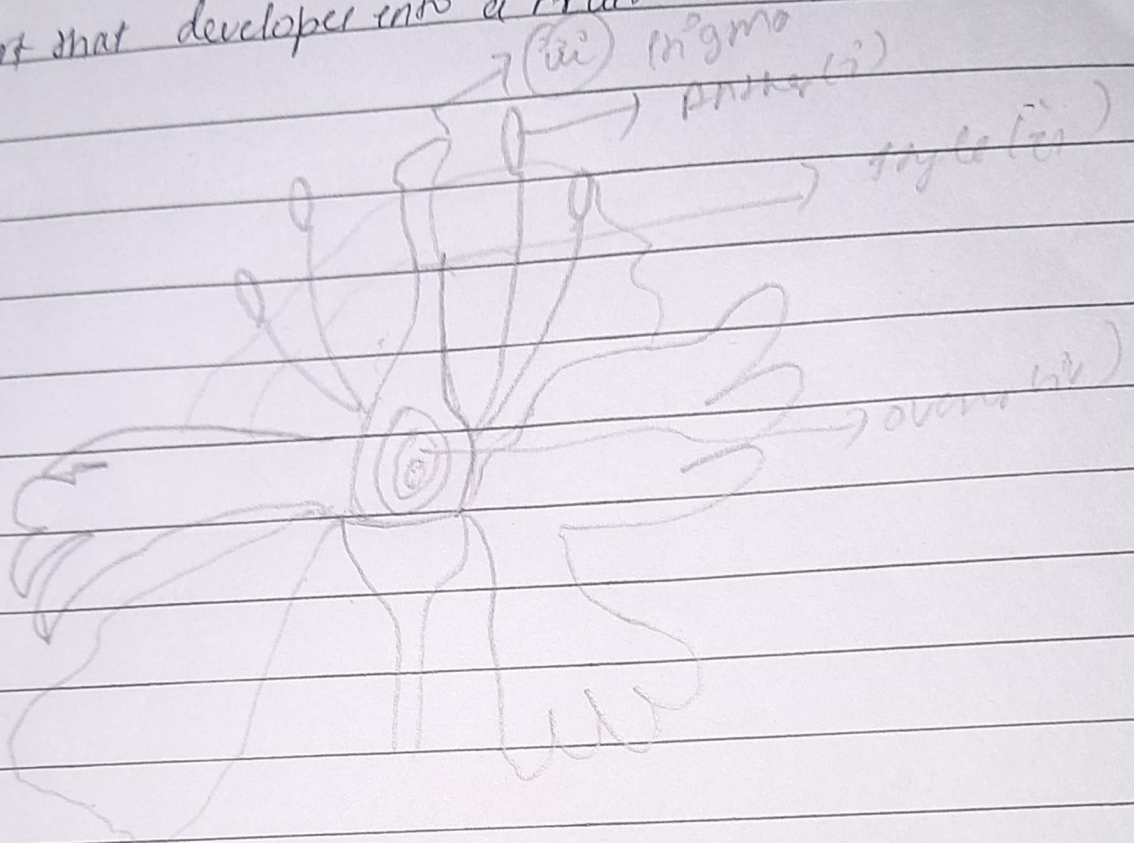
Unisexual :- An organism that has only one reproductive organ (male or female). Ex :- Maize

Bisexual :- An organism that has both the reproductive organ (male and female) Ex :- Hibiscus.

2: Q Draw a longitudinal section of a flower and label the following parts:

- (i) Part that produces pollen grain.
- (ii) Part that transfers male gametes to the female gametes.
- (iii) Part that is sticky to trap the pollen grain.
- (iv) Part that develops into a fruit.

Ans



3: Q (a) Biennial -

(i) 15 petals

(ii) (c) continue species from generation to generation.

(i) (a) Androsace.

3:00 i) (a) Biennial -

ii) (b) separate

iii) (c) (d) continue species from generation to generation -

iv) (a) Androsace -