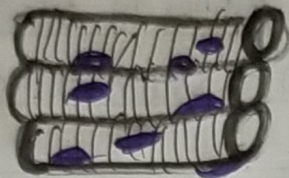


Home Work

1) Draw the diagram of three different types of muscles. Write two characteristics of each type.

1) Skeletal muscles



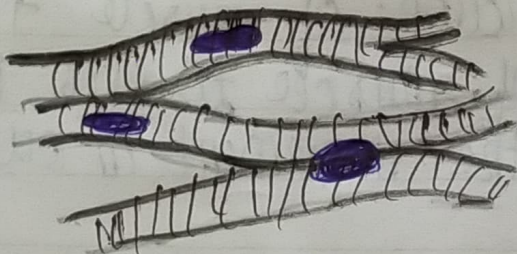
- > fibres : striated, tubular & multinucleated.
- > usually attached to skeleton.

2) Smooth muscles.

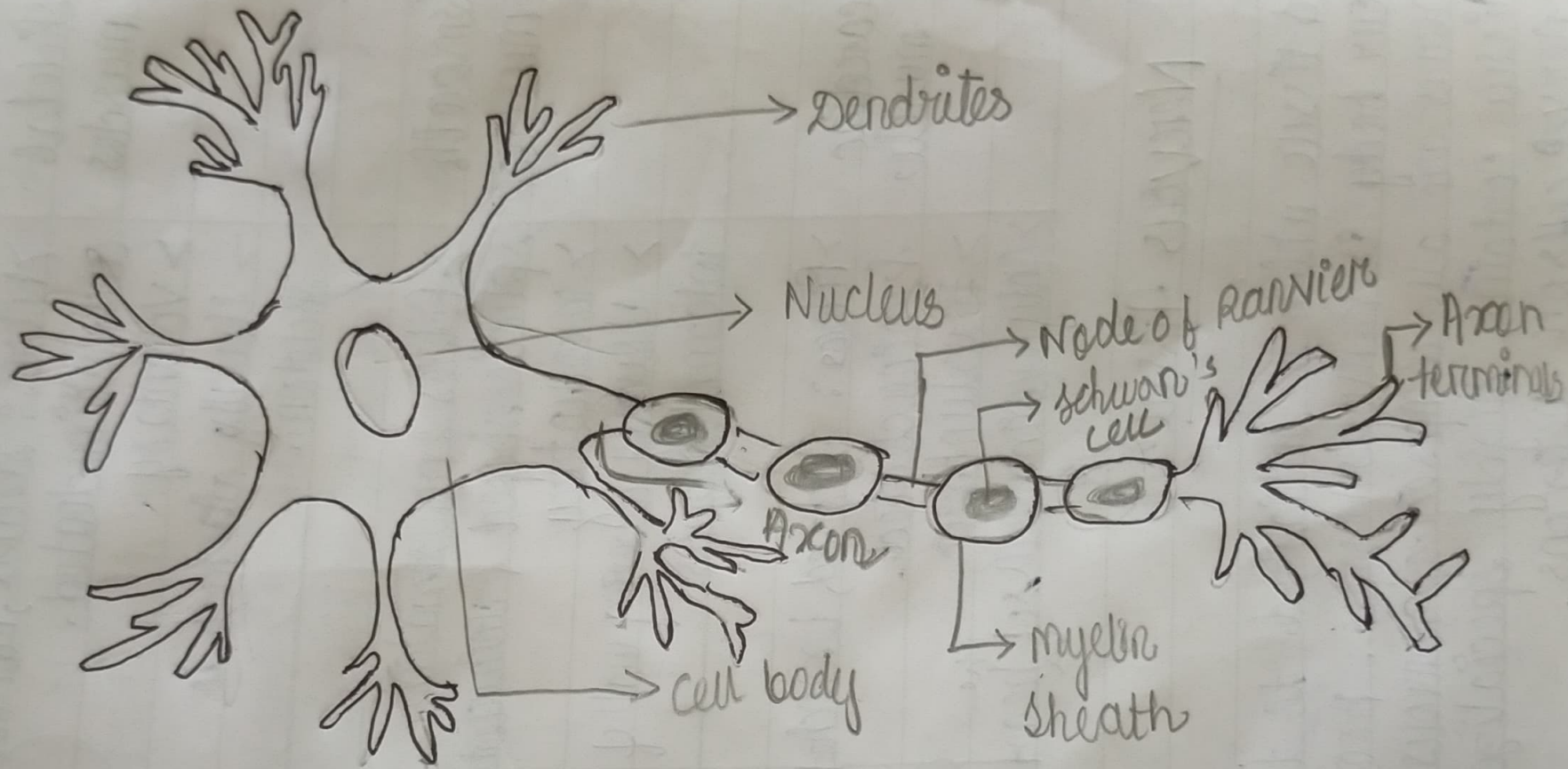


- > fibres : non striated, spindle shaped & uninucleated.
- > usually covering wall of internal organs.

3) Cardiac muscles.



- > fibres : striated, branched & uninucleated.
- > only covering walls of the heart.



Structure of typical Neuron