

C. 10  
25.11.21

# Exercise - 14 CA)

5a.  $-12 = 12$

b.  $6 = -6$

c.  $0 = 0$

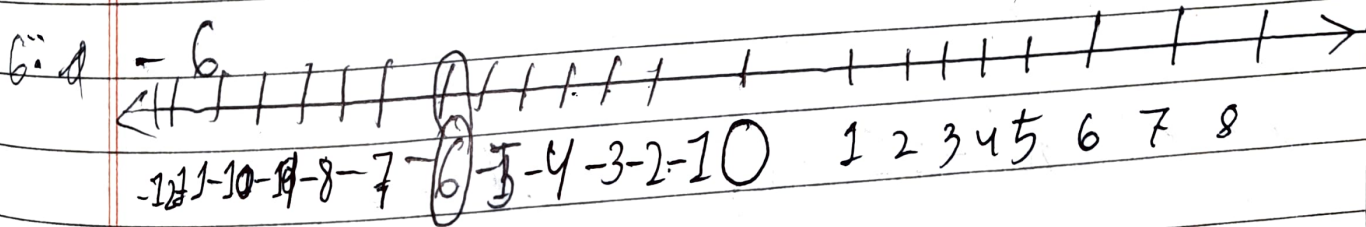
d.  $-7 = 7$

e.  $-4 = 4$

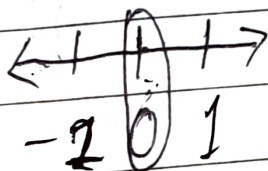
f.  $-10 = 10$

g.  $8 = -8$

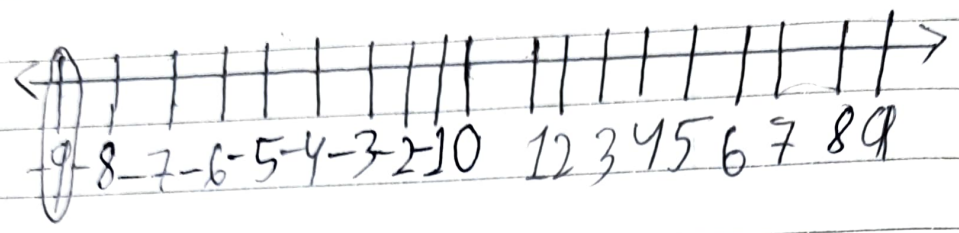
h.  $4 = -4$



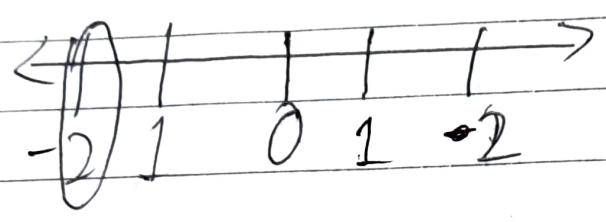
b.  $0$



c.  $-9$



d.  $-2$



7. a.  $-5$  and  $2$

$= 6$

b.  $4$  and  $11$

$= 7$

c.  $-3$  and  $-10 = 6$

~~9.~~

d.  $-5$  and  $+5 = 9$

~~9.~~

e.  $0$  and  $-6 = 5$

f.  $-4$  and  $+4 = 7$

a)  $-2$  and  $+7 = -1, 0, 1, 2, 3, 4, 5, 6$

b)  $-9$  and  $+4 = -3, -2, -1, 0, 1, 2, 3$

c)  $0$  and  $-5 = -1, -2, -3, -4$

d)  $2$  and  $9 = 3, 4, 5, 6, 7, 8$

e)  $-1$  and  $5 = 0, 1, 2, 3, 4$

f)  $0$  and  $10 = 1, 2, 3, 4, 5, 6, 7, 8, 9$

a) a loss of ₹ 90 =  $-90$

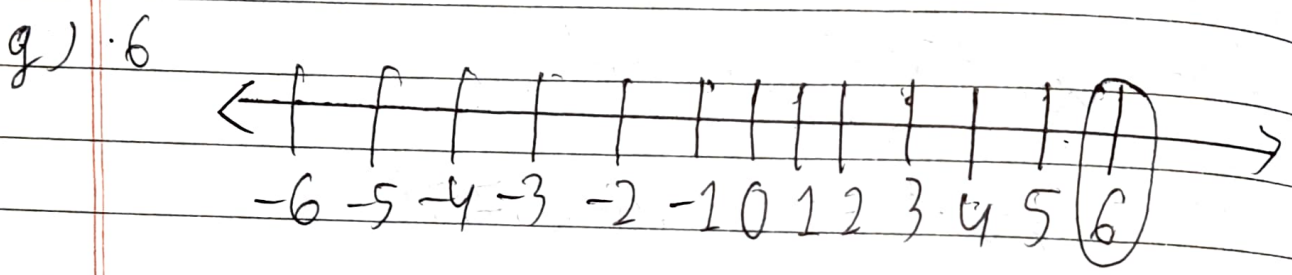
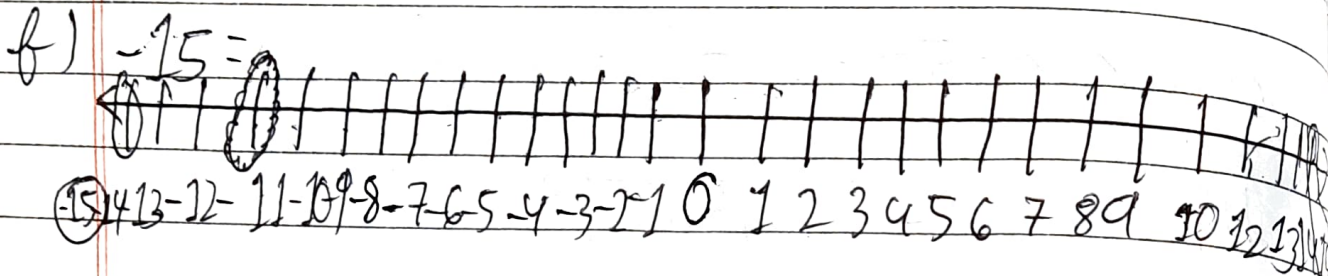
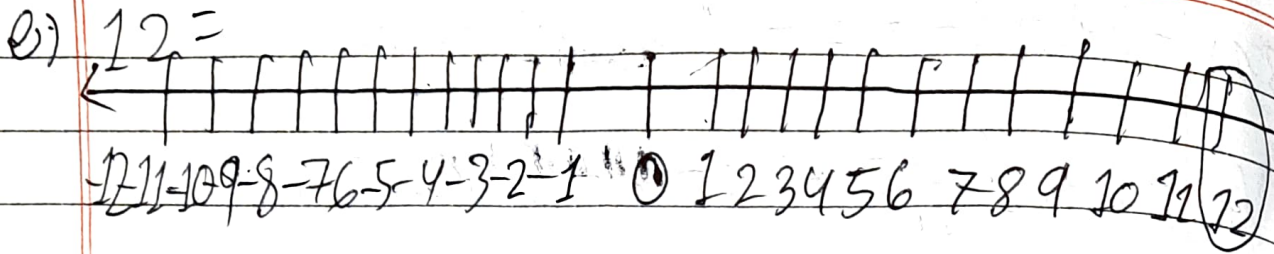
b) A profit of ₹ 48 =  $+48$

c) 5 km above ground level =  $+5$

d) 2 km below water level =  $-2$

e)  $22^\circ$  above zero =  $+22$

f)  $3^\circ$  below zero =  $-3$



10. a) A profit of ₹ 700 =  $-700$

b)  $-13 = +13$

c)  $27 = -27$

d) Going south = Going North

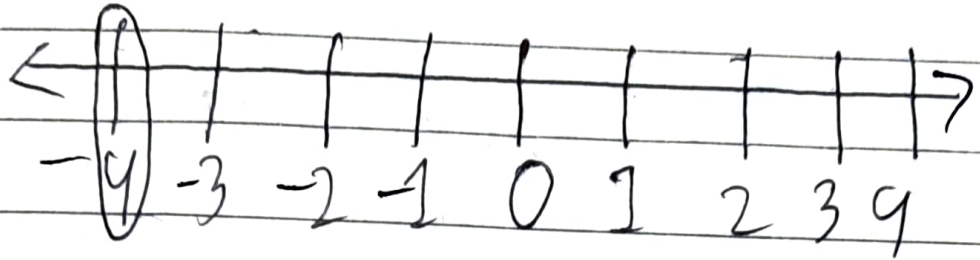
e) A loss of ₹ 500 =  $-500$

f) Decrease in population = Increase in population.

g) Crediting money in bank =

AA- Debit money in bank.

$$2A = 4$$



26.11.21  
W