

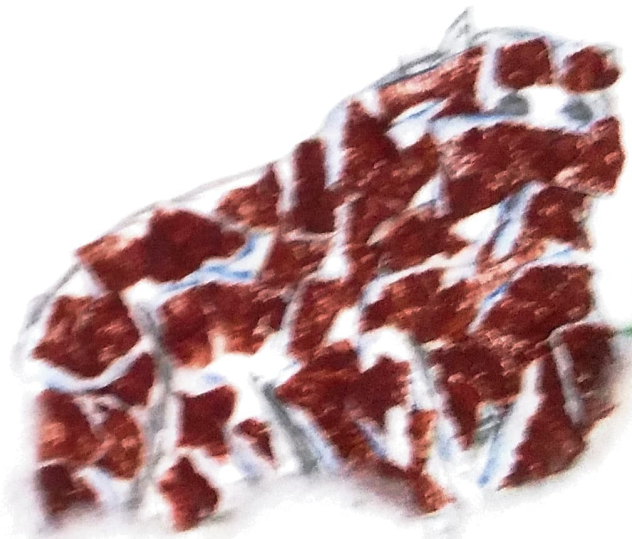


POTATOES  
POTATOES ARE  
GROWN IN  
SOUTH-WEST  
PART OF GREEN  
LAND

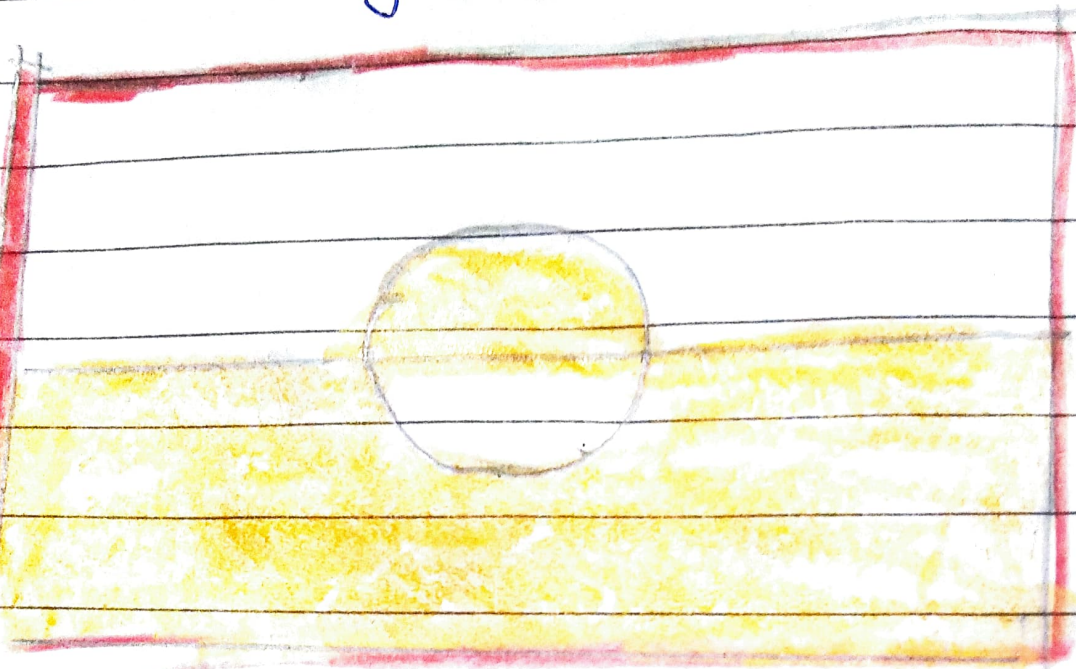


# GREEN LAND

BEAR  
BEARS ARE  
FOUND IN  
EXTREME  
COOL  
PLACE.



# Flag of Greenland



Page     

A. Fill in the blanks.

1. The capital of Greenland is Nuuk, earlier called Godthab.
2. The Frigid Zone in which most of Green land is situated is also called the Tundra region.
3. Huge pieces of ice floating in the sea are known as icebergs.
4. The original inhabitants of Greenland are the Inuits.
5. Igloos are temporary houses made of blocks of ice by the Inuit.

13. Match the columns.

1. Eric the Red

2. Sisimiut

3. Arctic Circle

South-western Coast

Kayaks

a. boats

b. warmest part

c. gave the name

d. passes through

e. town in Greenland

