

Homework

1. Define the terms unisexual and bisexual giving one example of each.

The organism which contain only the male or female reproductive organs are called unisexual.

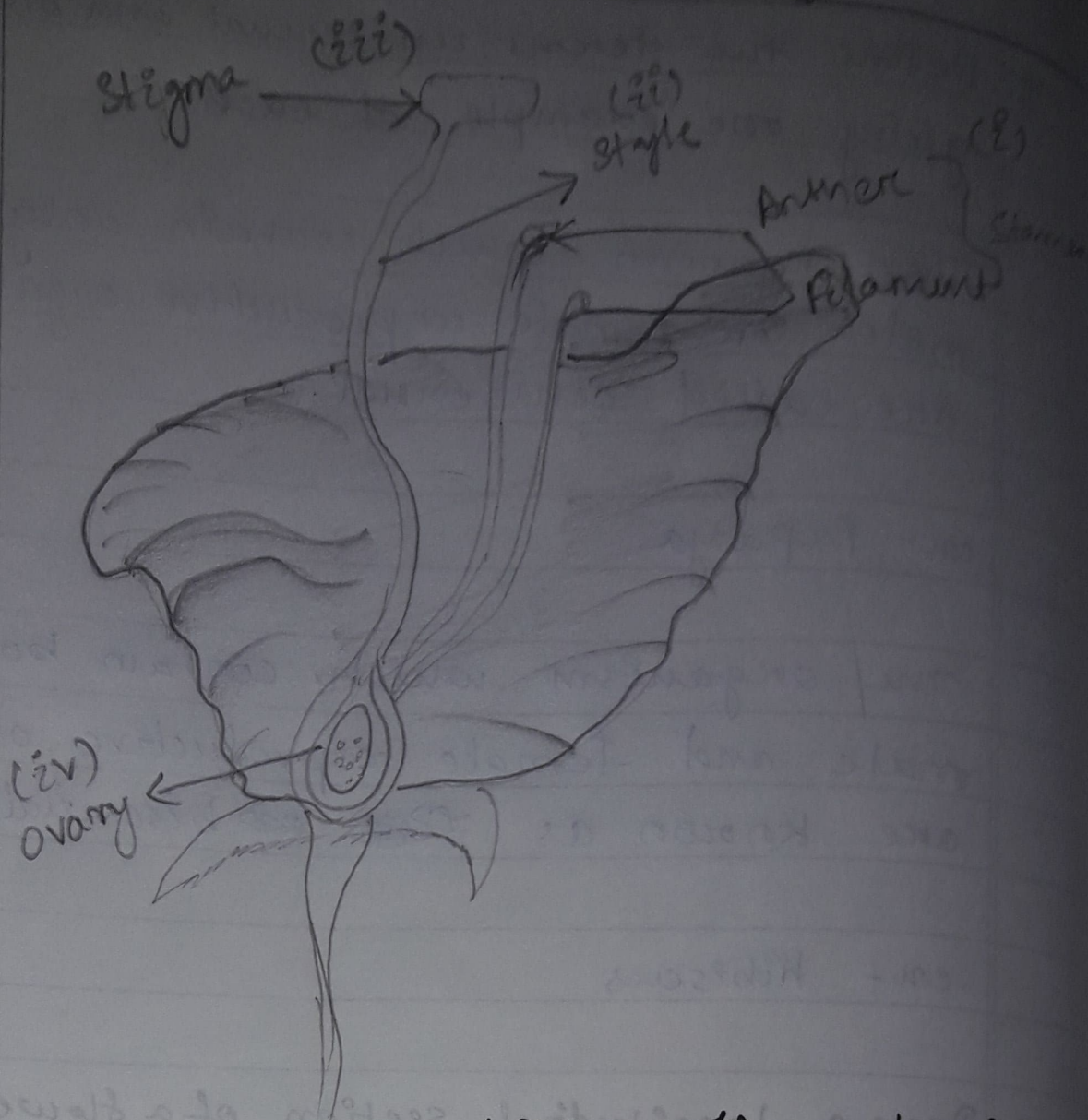
ex - Papaya

The organism which contain both male and female reproductive organs are known as ~~unisexual~~ bisexual.

ex - Hibiscus

2. Draw a longitudinal section of a flower and label the following parts:

- (i) Part that produces pollen grains.
- (ii) Part that transfers male gametes to female gametes.
- (iii) Part that is sticky to trap the pollen grain.
- (iv) Part that develops into fruit.



3. (i) The flower of the hibiscus flower plant is bisexual

(ii) The part of the flower which is present in the centre of the flower is

pestil

(iii) Reproduction is essential for living organism in order to

Continue the species generation after



generation.

(iv) The male reproductive parts of a flower, the stamens are collectively known as

Androecium