

O.C.W
29-6-21

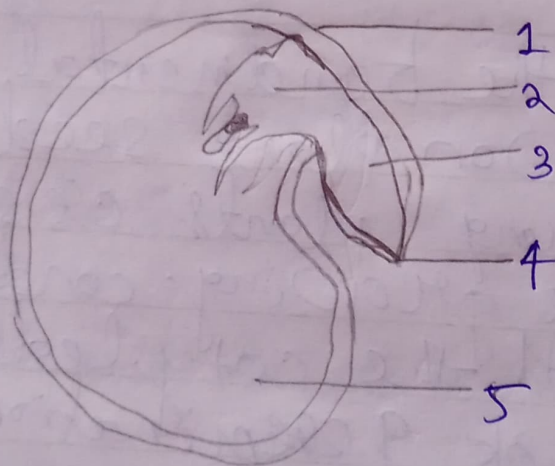
Ch-2 The Flower

MCQ

- ① a) Radicle
b) Plumule
c) Mair
d) Epicotyl
e) Hypocotyl
f) Anther
g) Stamens and Carrels
h) Apple
i) Cotyledons or endosperm

Short answers questions

1.



① Testa :- It is the outer exposed part of the seed.

② Plumule :- It is located between the cotyledons and develops into a shoot.

③ Radicle :- It is located between the two

Cotyledons and develop into a root.

(A) Micropyle :- It absorbs and allows the entry of as much as water as is required for germination.

(B) Cotyledon :- It stores the food material which is used by seedling for growth.

- 2.
- a) Pea
 - b) Maize, Grain
 - c) Bean & Seed
 - d) Bean Seed

3. a) The radicle develops into a root while the plumule develops a shoot.

b) Hilum is the inner concave side of the seed where the seed was attached to the fruit wall.

c) Testa is the outer exposed part of the seed coat, whereas tegmen is a thin membrane and lies under the testa. It is the inner part of the seed coat.