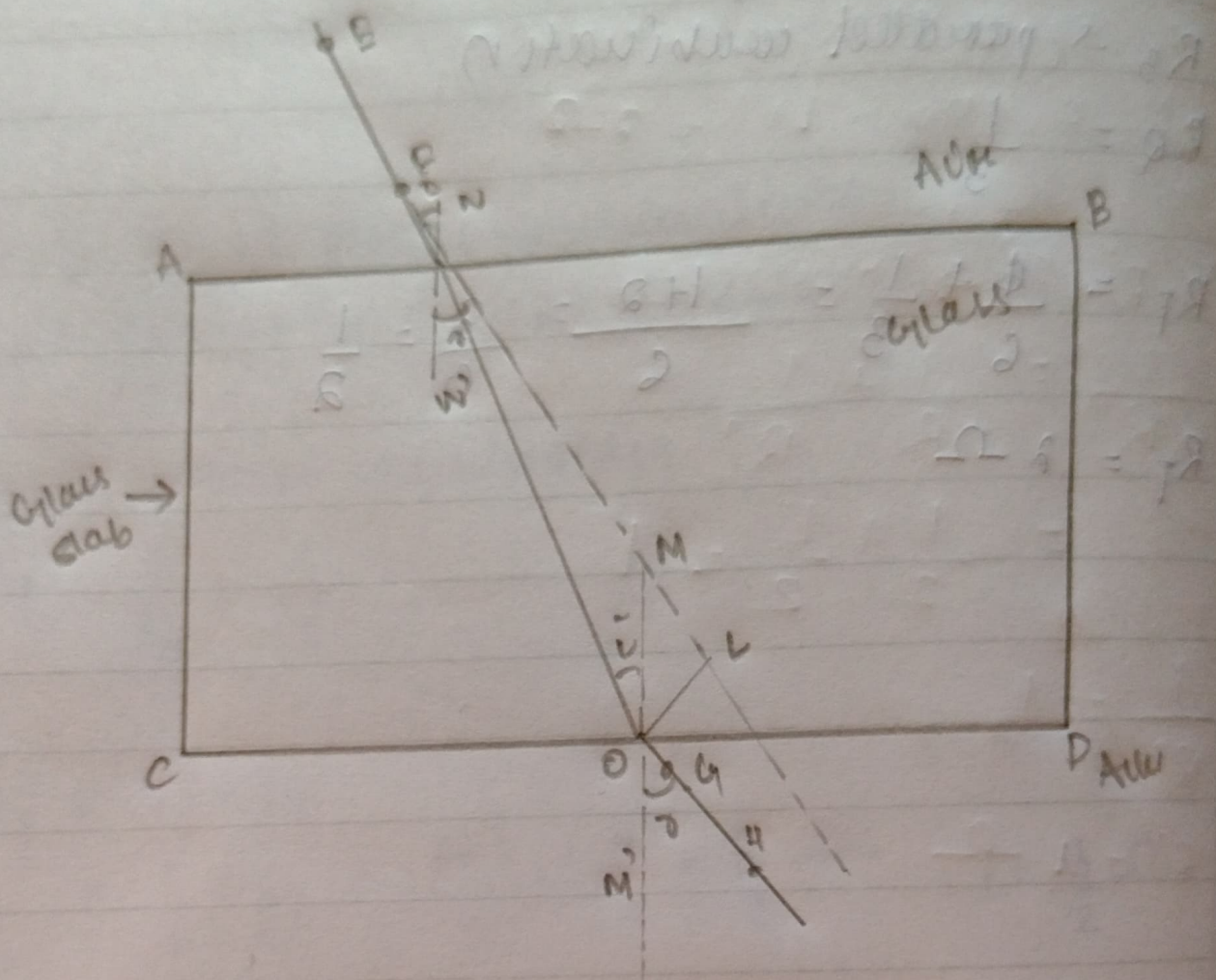


4. Draw the diagram of path of light when it travels through a glass slab.



1. Name the type of mirrors used in following situations

- (a) head light of car - concave
- (b) side/rear view mirror of vehicle - convex
- (c) solar furnace - concave

2. What are the two types of refractive index.

- relative refractive index
- Absolute refractive index

4. Differentiate between concave and convex lens.

Concave lens

Convex lens

- |   |  |
|---|--|
| <ul style="list-style-type: none"> <li>→ focal length is negative</li> <li>→ image is virtual and diminished</li> <li>→ used to correct Myopia</li> </ul> | <ul style="list-style-type: none"> <li>→ focal length is positive</li> <li>→ can be real, virtual, enlarge, diminished</li> <li>→ used to correct Hypermyopia</li> </ul> |
|---|--|

5. What are the properties of the image formed by plane mirror.

The properties of the image formed by plane mirror -

- virtual and erect
- size of image is equal to that of object
- the image formed is as far behind the mirror as the object is in the front of it.
- image is laterally inverted.