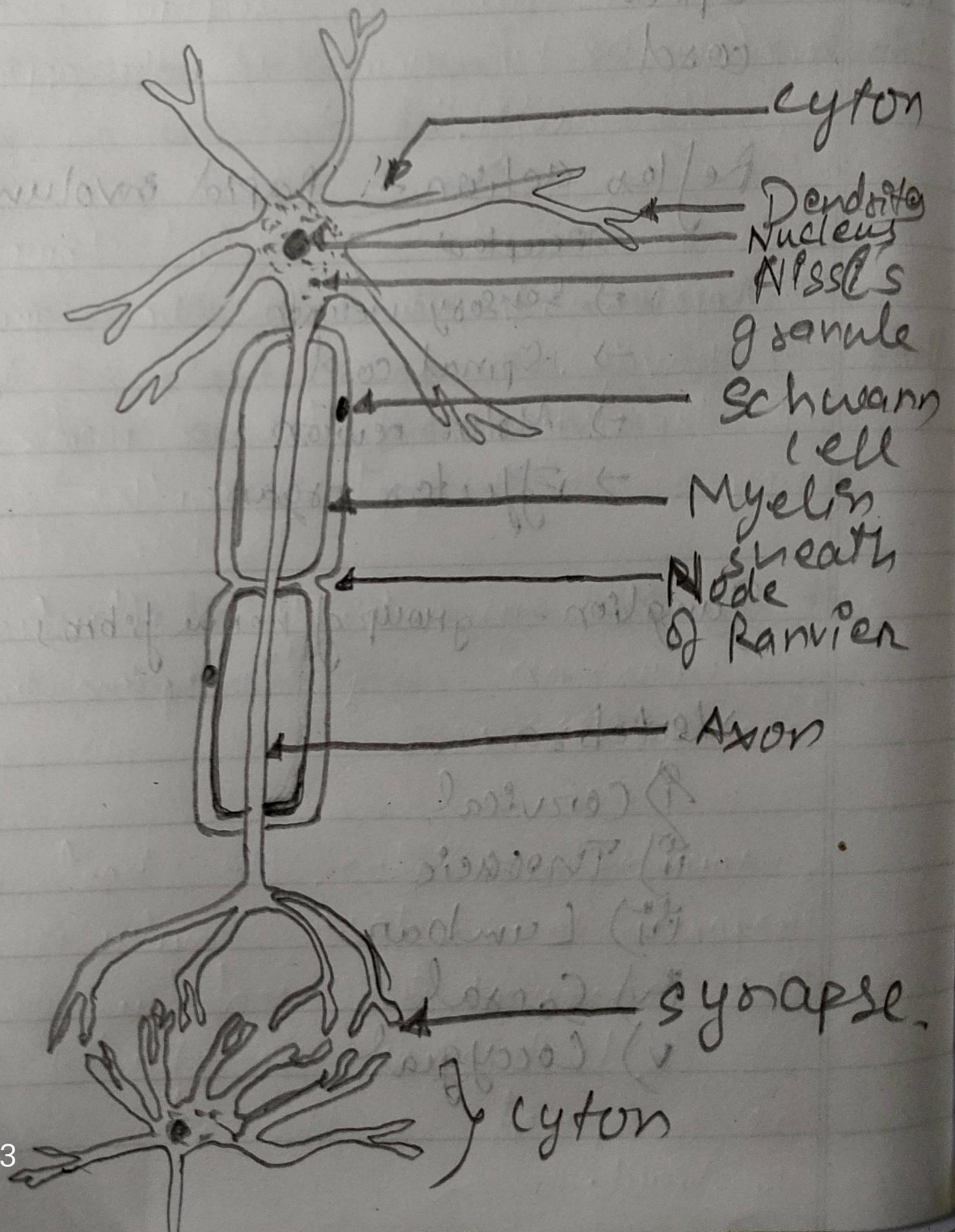
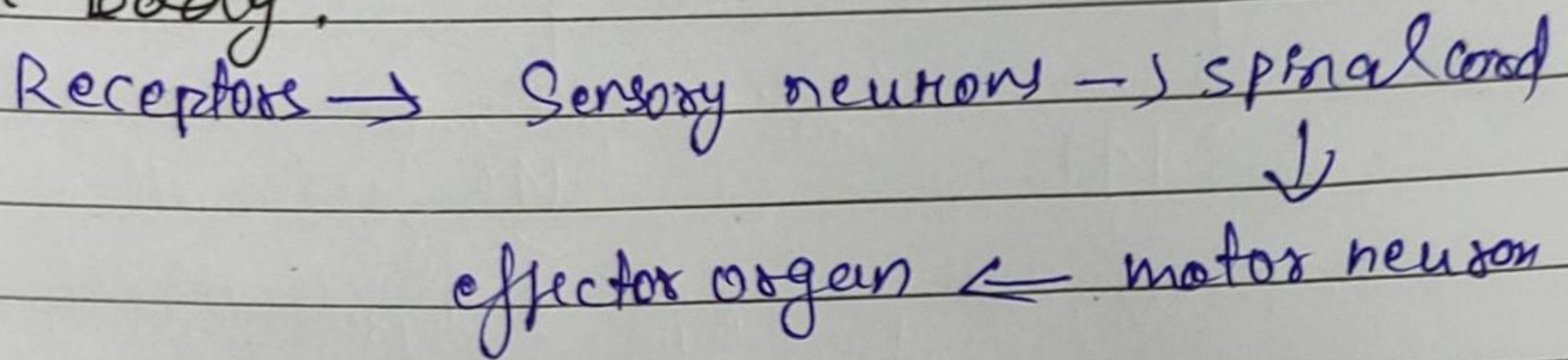


Q) Draw a well labeled diagram of neurons.





Q) Trace the pathway of impulse conduction in your body.



Q) What do you mean by reflex action? What is its significance?

Reflex action is a rapid involuntary response of effectors to the stimulus. It minimises any damage to the body from potential harmful conditions, such as touching something hot. Reflex actions are therefore essential to the survival of many organisms.

Q) Classify neurons on the basis of neurites.

- i) Multipolar - only cyton
- ii) Bipolar - cyton + Axon
- iii) Unipolar - cyton + Axon + dendrites.