

HW

Reproduction in Humans

Date 23.7.21

Page _____

1. Define gametes

Ans- Male or Female Reproductive Cells are called gametes.

3) Differentiate between primary and secondary accessory sexual parts.

Primary Reproductive System

Accessory Reproductive System

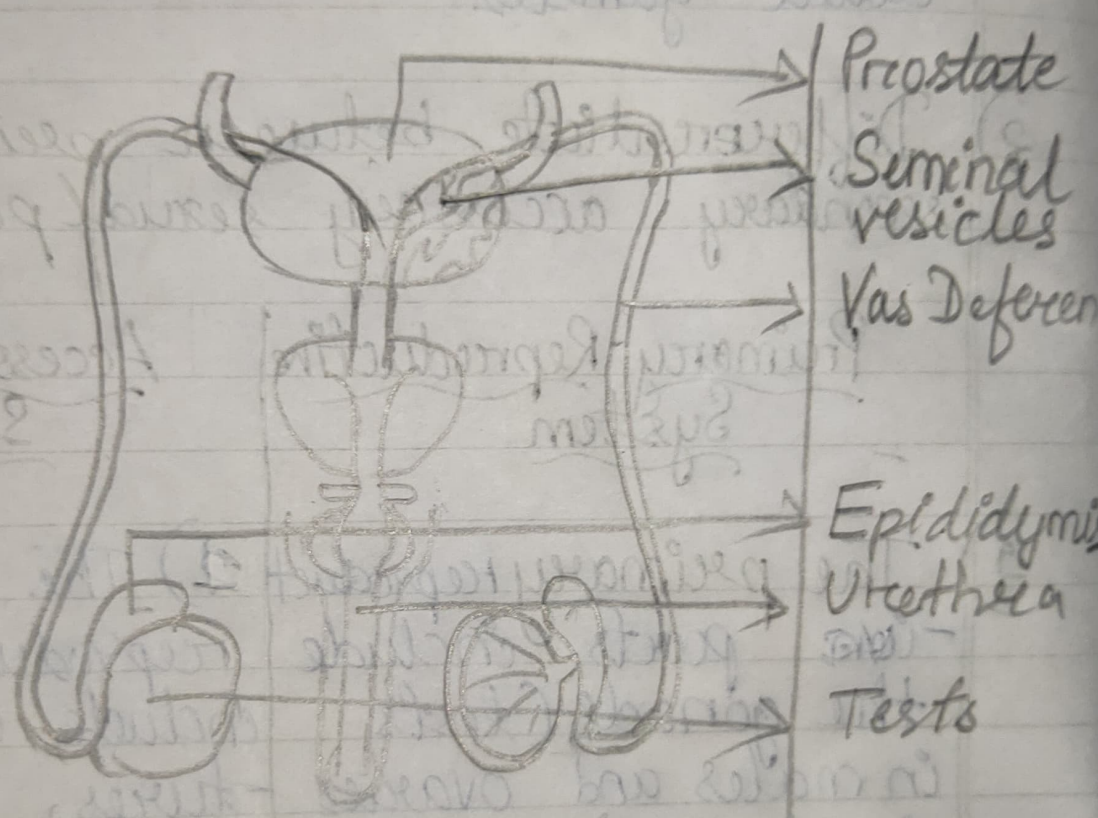
1) The primary reproductive parts include the gonads (testes in males and ovaries in females) which produce the sex cells.

1) The accessory reproductive parts include all these structures, ducts and glands which help in the transfer and meeting of two kinds of sex cells leading to fertilization.

2) The primary reproductive organs do not help in the development of baby.

2) The accessory reproductive organs help to growth and development of egg up to the birth of the baby.

2) Draw the diagram of male Reproductive system.



Prostate
 Seminal vesicles
 Vas Deferens
 Epididymis
 Urethra
 Testis