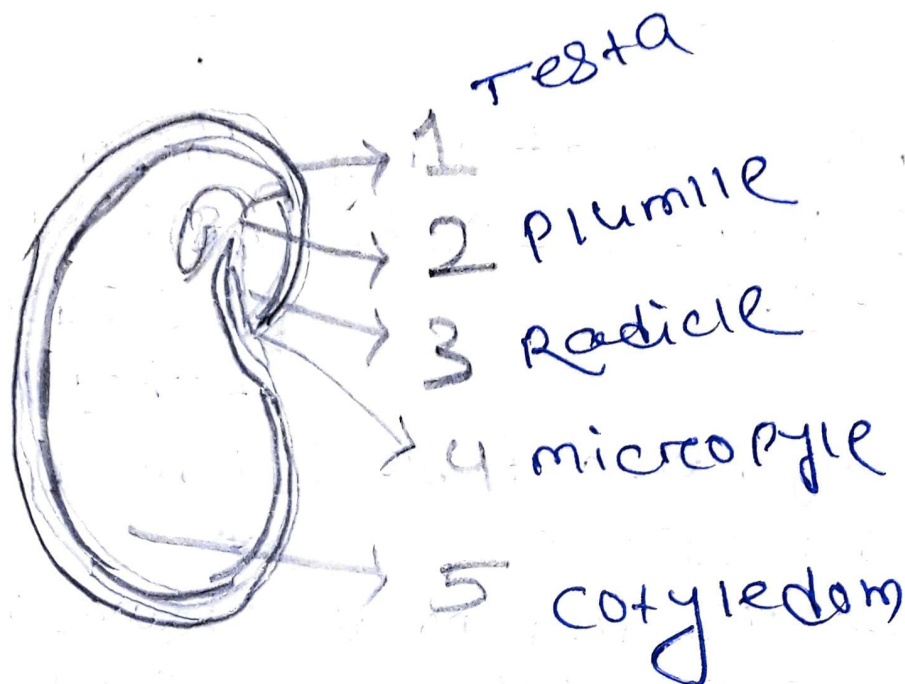


Short Answer

29/6/21

(1)



1. Testa → It is the outer exposed part of the seed.

2. Plumule → It is located between the two cotyledons and develops into a shoot.

3. Radicle → It is ~~at~~ located between the two cotyledons and develops into a root.

4. Micropyle → It absorbs and allows the entry of as much as much as water as is required for germination.

b. Cotyledon: → It stores the food material which is used by the seedling for growth.

(2)

NAME THE FOLLOWING:

(a) A seed which shows hypogeal germination. Pea

(b) A monocot seed. Maize grain

(c) A dicot seed Bean seed

(d) A seed which shows epigeal germination. Bean seed