

Ans
10.8.21

1. Define the terms unisexual & bisexual giving one example of each

A. Unisexual is plant whose flowers contain either stamens or carpels but not both.
Ex - Papaya, Watermelon.

Bisexual is the plant whose flowers contain both stamens & carpels. Ex - Mustard, Hibiscus.

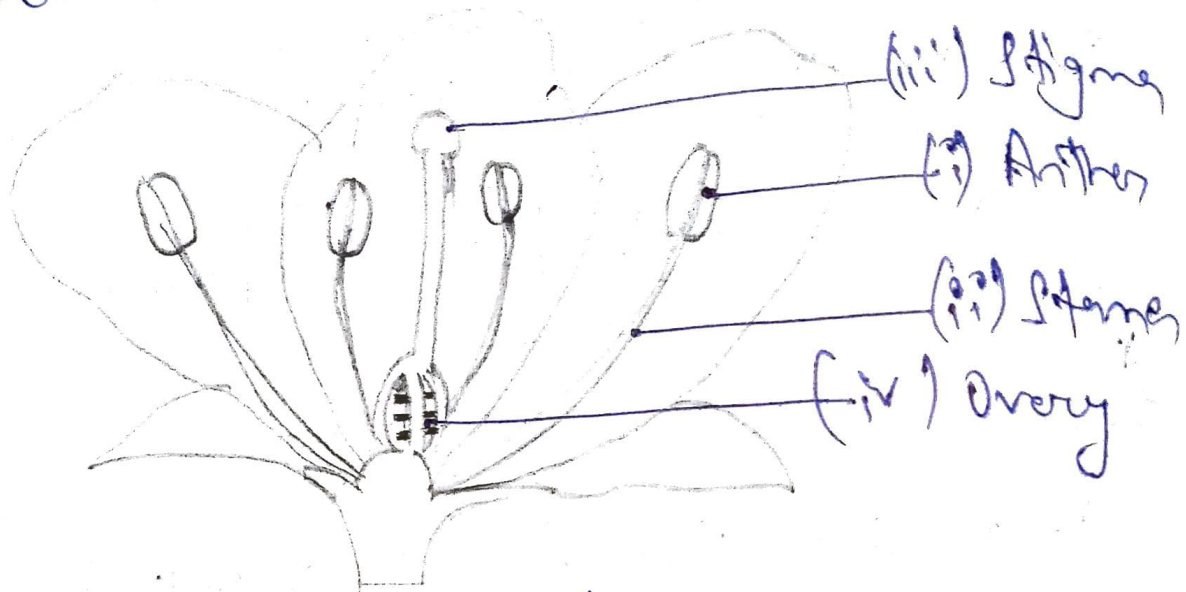
2. Draw a longitudinal section of a flower & label the following parts.

(i) Part that produces pollen grains

(ii) Part that transfers male gametes to female

- (iii) gametes.
Part that is sticky to trap the pollen grain.
- (iv) Part that develop into a fruit.

A.



Longitudinal section of flower

3. MCQ

- (i) The flower of Hibiscus plant is

A. (a) Bisexual

- (ii) The part of flower which is present in centre of flower is

A. (c) Carpel

- (iii) Reproduction is essential for living organisms in order to

A. (d) Continue species generation after generation.

(iv) The male reproductive parts of flower, the stamens, are collectively known as
A (a) Androecium