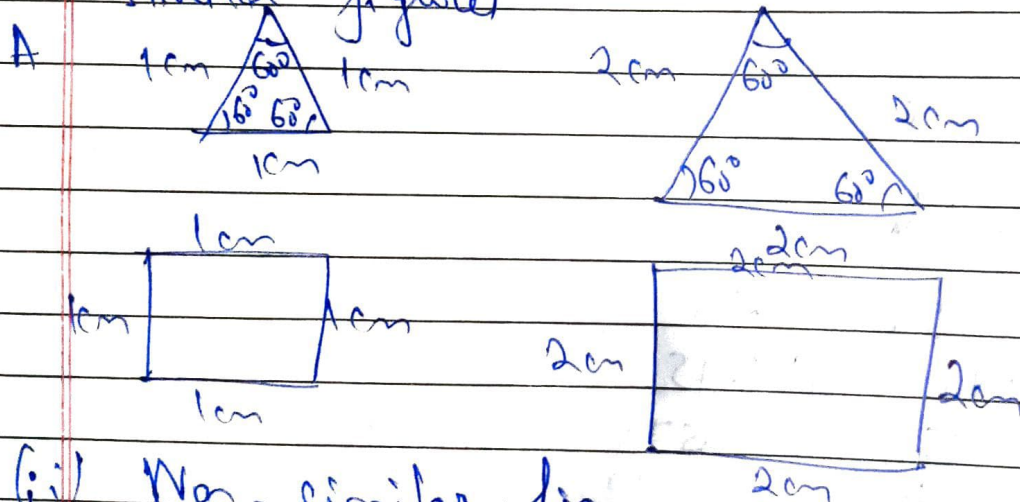


Ex-6.1

1. Fill in the blanks

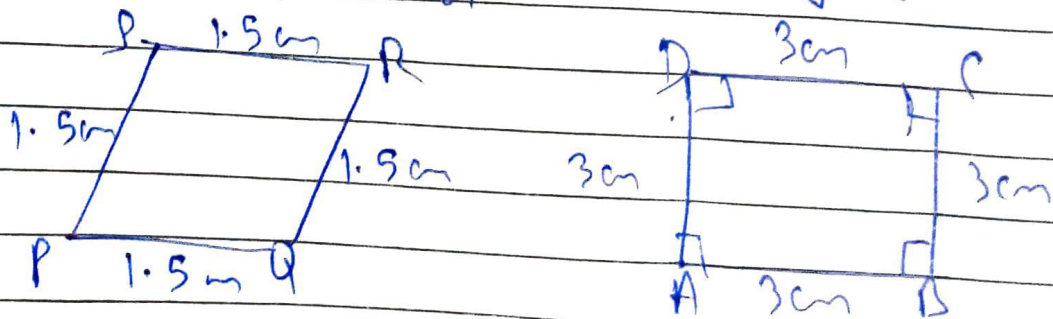
- (i) All circles are similar
- (ii) All squares are similar
- (iii) All equilateral triangles are similar
- (iv) Two polygons of the same no. of sides are similar if (a) Their corresponding angles are equal & (b) Their corresponding sides are proportional.

2. Give any different examples of pair of similar figures



(ii) Non-similar fig.
A. Trapezium & square
Triangle & sq

3. State whether the following quadrilaterals are similar or not:



A. Quadrilateral PQRS & ABCD are not similar as their corresponding sides are proportional, i.e. $1:2$, but their corresponding angles are not equal.