

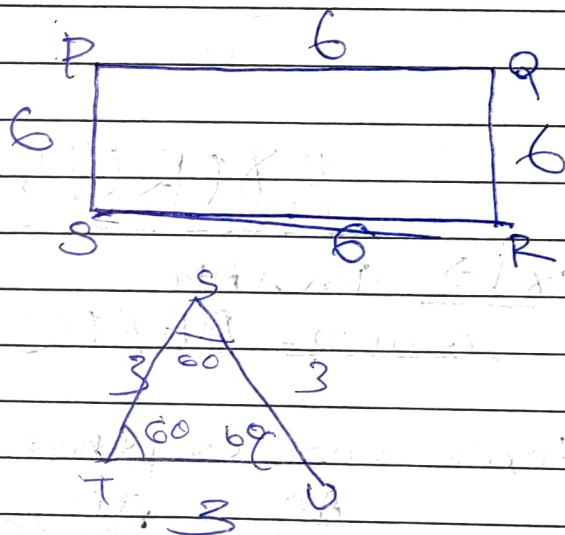
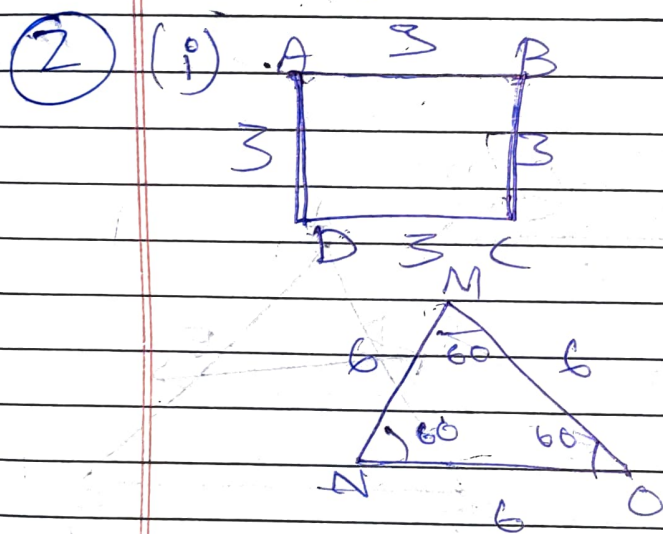
TRIANGLES

① (i) All circles are similar

(ii) All squares are similar.

(iii) All equilateral triangles are similar.

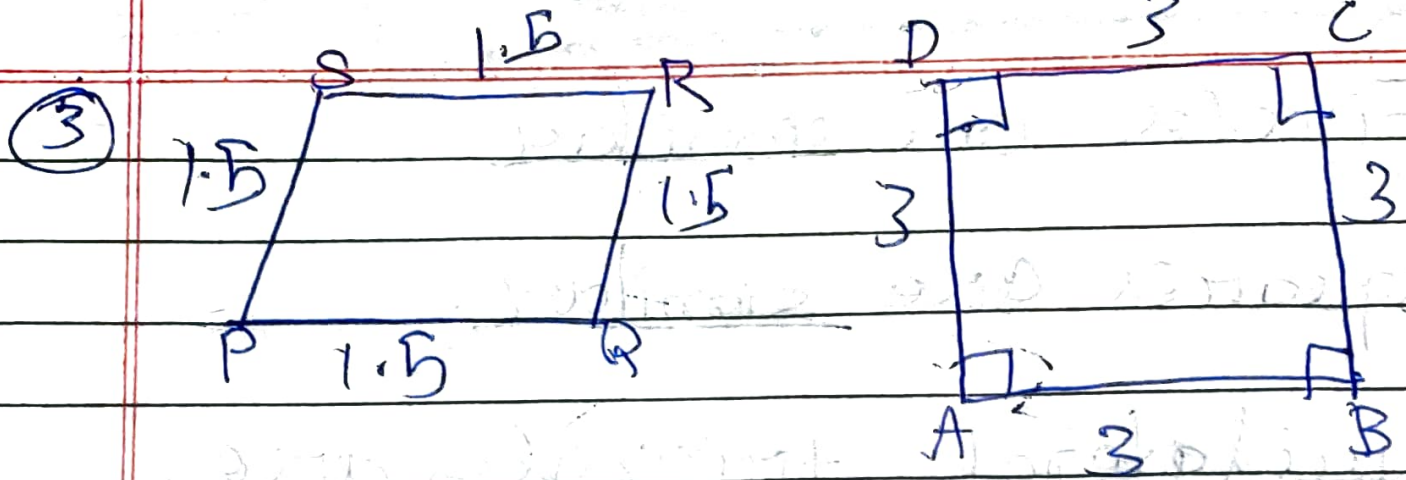
(iv) Two polygons of the same number of sides are similar, if (a) their corresponding angles are same and (b) their corresponding sides are proportional.



Thus, the pair of similar figures are proportional. The pair of the ABCD and PQRS is 1:2 & that of MNO and STO is 2:1 respectively.

(ii) As, these two examples do not follow scale factor.

Hence, these all are non-similar pairs of figures.



Here, the two ~~polygons~~ polygons of the same number of sides are similar.

- (i) their corresponding sides are in the same proportion 1:2 but their corresponding angles are not equal.