

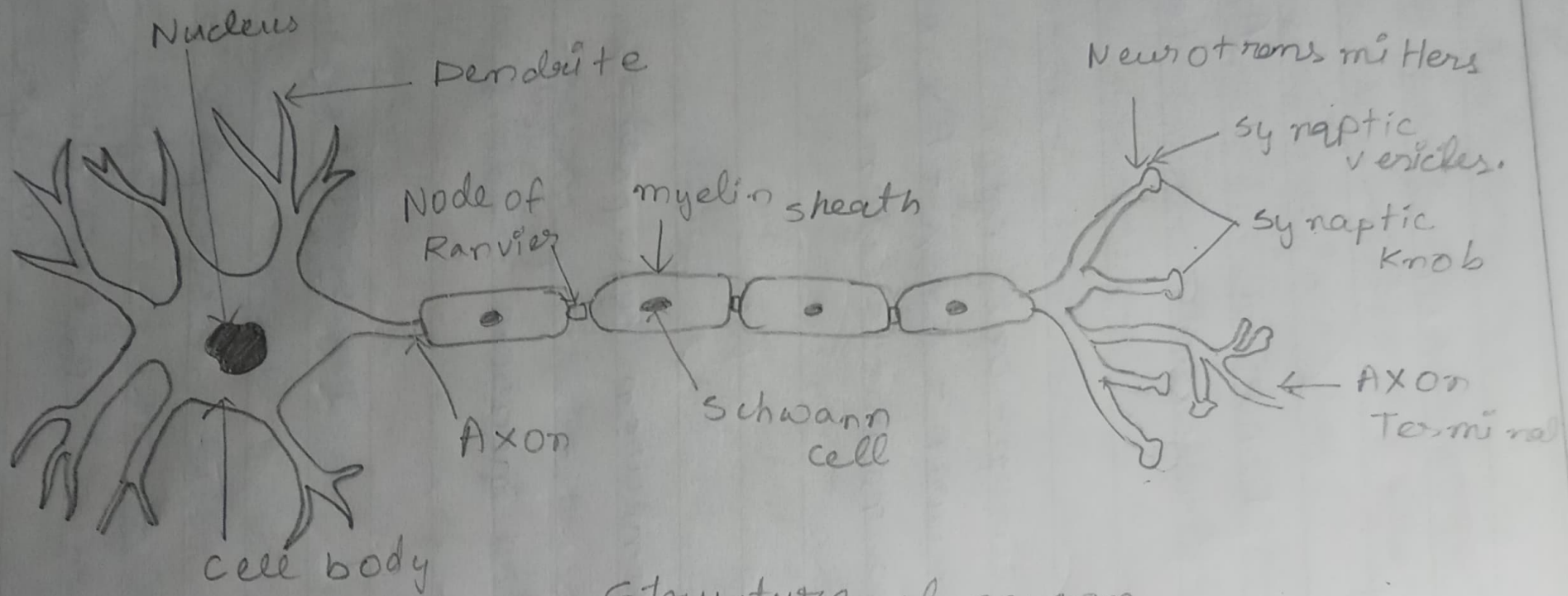
How  
13/7/21

Q1. Draw a well-labeled diagram of neurons.

Q2. Trace the pathway of impulse conduction in your body.

Ans The pathway of impulse conduction in our body are:-

1. Sensory receptor: (responds to a stimulus by producing a generator or receptor potential).
  2. Sensory neuron: (axon conducts impulses from receptor to integrating center).
  3. Integrating centre: (one or more regions within the CNS that relay impulses from sensory to motor neurons).
  4. Motor neuron: (axon conducts impulses from integrating center to effector).
  5. Effector: (muscle or gland that responds to motor nerve impulses).
3. What do you mean by reflex action?



Structure of neuron

What is its significance?

Ans → Reflex action is a rapid automatic response to a stimulus which is not under the voluntary control of the brain or the spontaneous reaction to a stimulus is called reflex action.

→ It helps us in protecting us from any stimulus which may harm us.

4. Classify neurons on the basis of neurites.

Ans Neurons are classified on the basis of neurites into two types

\* Dendrites (afferent)

\* Axon (efferent)