

• Striated muscles (stripped, skeletal or voluntary):-

→ Fibers: striated, tubular and multinucleated

→ voluntary

→ usually attached to skeleton

- Smooth muscles (unstriated, visceral or involuntary muscles):-
  - Fibers: non-striated, spindle-shaped and uninucleated.
  - involuntary
  - usually covering wall of internal organs.

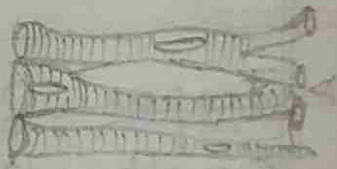
- Cardiac muscles:-
  - Fibers: striated, branched and uninucleated.
  - Involuntary
  - only covering walls of the heart



striated muscle cells



smooth muscle cells



Cardiac muscle cells

# STRUCTURE OF A NEURON

