

Transportation in Human

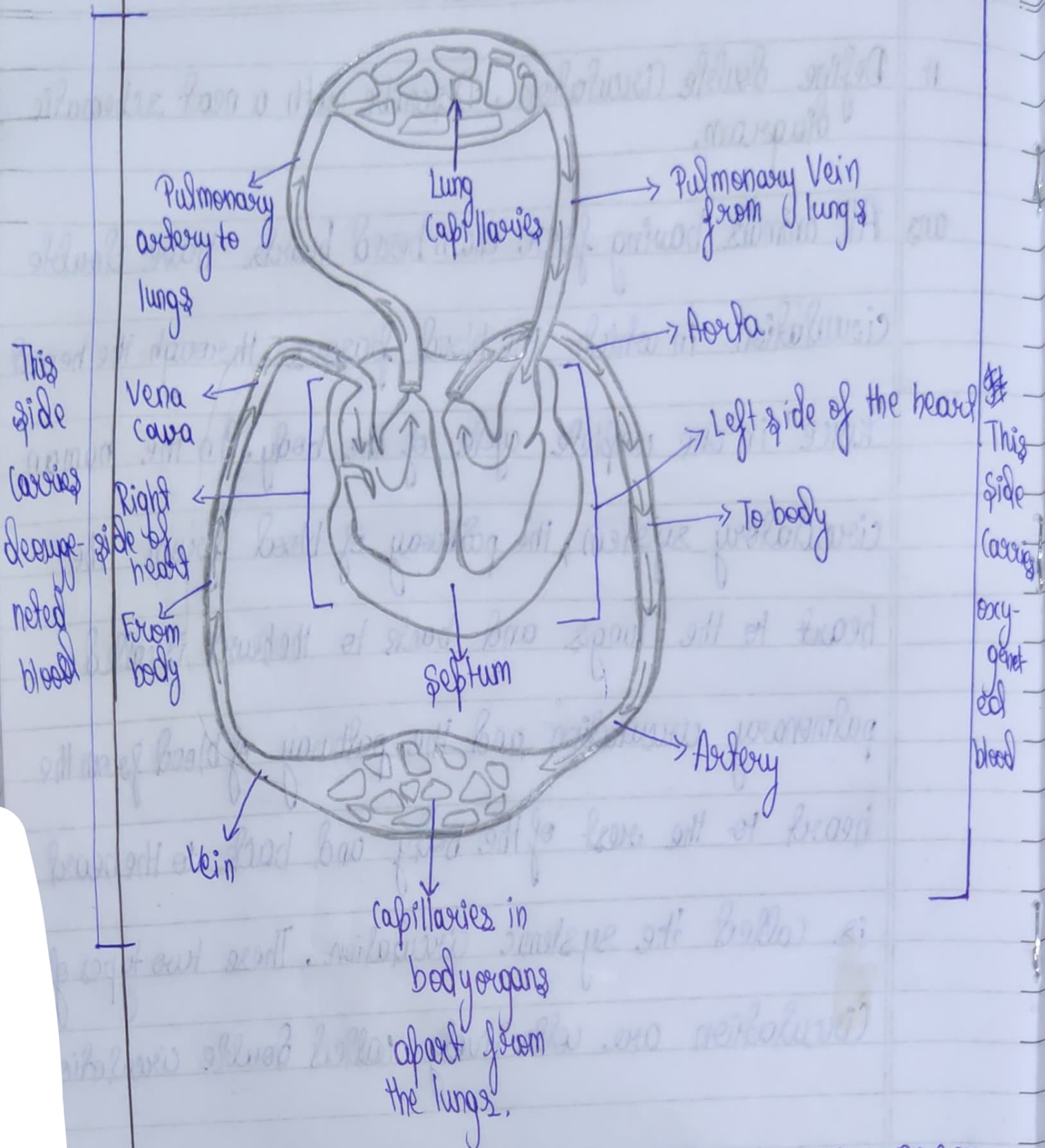
Date _____

Page _____

13/5/21

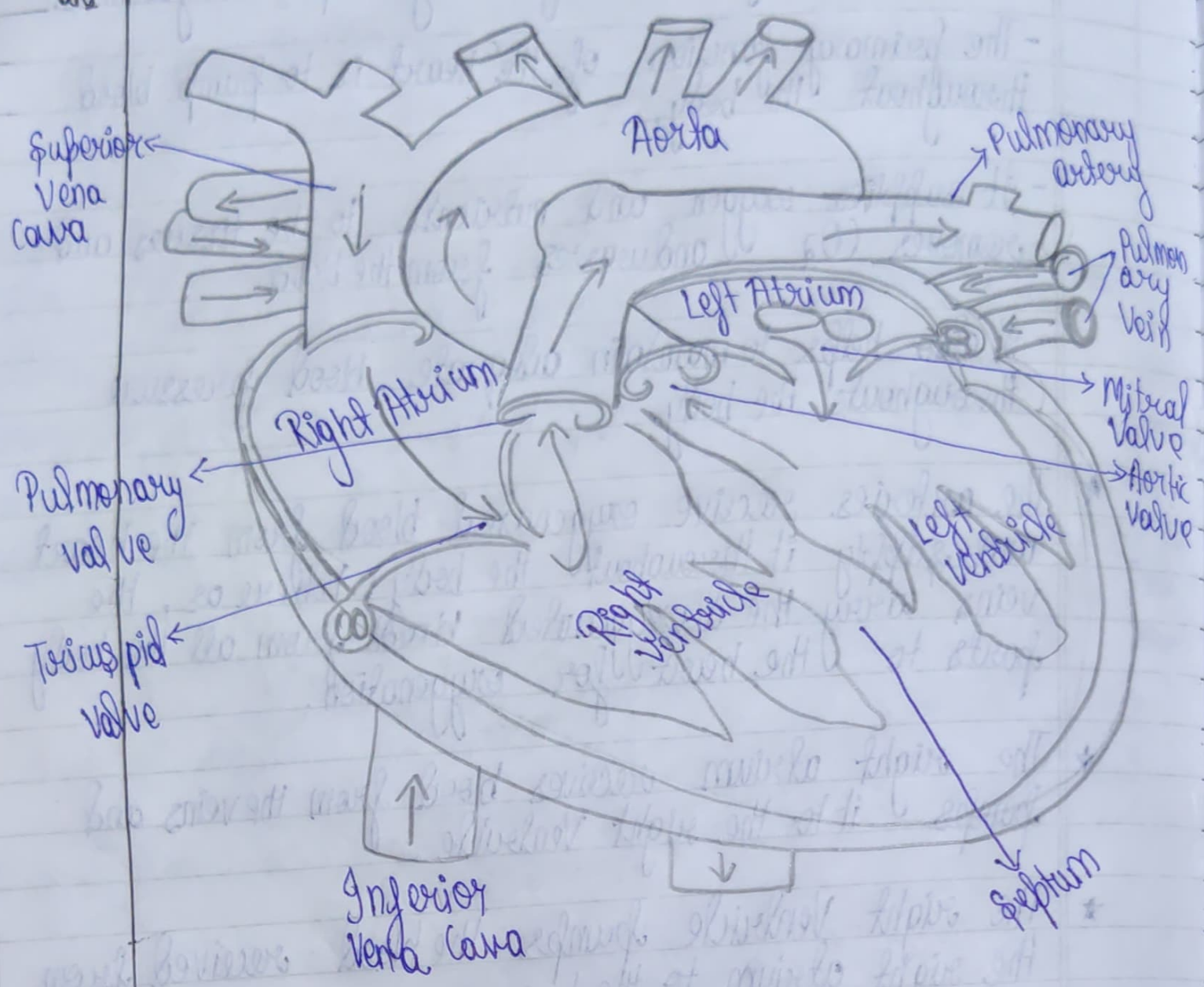
17 Define double circulation. Describe with a neat schematic diagram.

ans All animals having four chambered hearts have double circulation in which the blood passes through the heart 'twice' in one complete cycle of the body. In the human circulatory system, the pathway of blood from the heart to the lungs and back to the heart is called pulmonary circulation and the pathway of blood from the heart to the rest of the body and back to the heart is called the systemic circulation. These two types of circulation are collectively called double circulation.



SCHEMATIC REPRESENTATION OF TRANSPORT AND EXCHANGE OF OXYGEN AND CARBON DIOXIDE

Q2) Draw a neat labelled diagram of human heart and explain the different parts with functions.



Function of Heart

★ The heart performs the following important functions:

- The primary function of the heart is to pump blood throughout the body.

- It supplies oxygen and nutrients to the tissues and removes O_2 and wastes from the blood.

- It also helps to maintain adequate blood pressure throughout the body.

★ The arteries receive oxygenated blood from the heart and supply it throughout the body. Whereas, the veins carry the deoxygenated blood from all the body parts to the heart for oxygenation.

★ The right atrium receives blood from the veins and pumps it to the right ventricle.

★ The right ventricle pumps the blood received from the right atrium to the lungs.

★ The left atrium receives oxygenated blood from the lungs and pumps ~~the~~ it to the left ventricle.

* The left ventricle pumps the oxygenated blood throughout the body.