

Que - Ans

1. (i) Testa: It is the outer exposed part of the seed.
- (ii) Plumule: It is ~~the~~ located between the two cotyledons and develops into a shoot.
- (iii) Radicle: It is located between the two cotyledons and develops into a root.
- (iv) Micropyle: It absorbs and allows the entry of as much as water as it required for germination.
- (v) Cotyledon: It stores the food materials which is used by the seedling for growth.

a) Pea

b) Maize grain

c) Bean seed

d) Bean seed



REVIEW QUESTIONS



Multiple Choice Questions :

Put a tick mark (✓) against the correct alternative in the following statements :

(a) In a germinating seed, the roots develop from :

(i) Radicle

(ii) Plumule

(iii) Tegmen

(iv) Hilum

(b) In a germinating seed, the shoot develops from :

(i) Radicle

(ii) Plumule

(iii) Tegmen

(iv) Hilum

(c) Which one of the following is a monocotyledonous seed ?

(i) Bean

(ii) Pea

(iii) Maize

(iv) Gram

(d) If the cotyledons are pushed above the soil, then such type of germination is called :

(i) Epigeal

(ii) Hypogeal

(iii) Perigeal

(iv) Progeal

(e) If the cotyledons remain under the soil, then such type of germination is called :

(i) Epigeal

(ii) Hypogeal

(iii) Perigeal

(iv) Progeal

(f) Pollen is produced in the :

(i) Filament

(ii) Style

(iii) Pistil

(iv) Anther

(g) Reproductive whorls of a flower are :

(i) Stamens and carpels

(ii) Sepals and petals

(iii) Sepals and stamens

(iv) Petals and carpels

(h) Which one of the following is a false fruit ?

(i) Tomato

(ii) Apple

(iii) Potato

(iv) Pea

(i) In a seed, food is generally stored in :

(i) Radicle

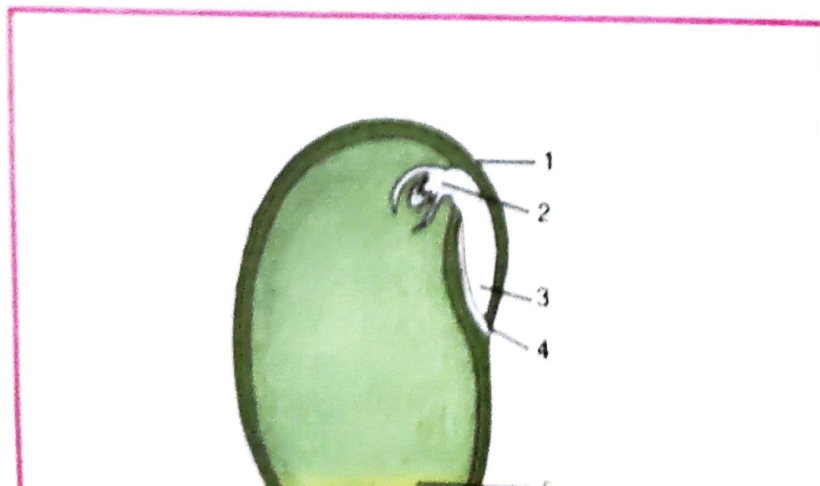
(ii) Plumule

(iii) Fruit

(iv) Cotyledons or endosperms

Short Answer Questions :

1. Given below is a longitudinal section of a bean seed. Label the parts marked 1 to 5 and their functions.



.....

.....

.....

.....

.....

.....