

male & female parts.

- Self pollination → can also cross pollination
- Pollination - X - ~~self~~ self - independent

HOME ASSIGNMENT

Q write two differences between natural and artificial vegetative reproduction.

Ans

NATURAL REPRODUCTION [VEGETATIVE]

- * It refers to the natural development of a new plant without human interference.

- * Vegetative Propagation by stem, root, leaf etc. are some of the examples.

ARTIFICIAL REPRODUCTION [VEGETATIVE]

- * It refers to man-made development of a new plant by human intervention.

- * Cutting, layering, grafting etc. are some of the examples.

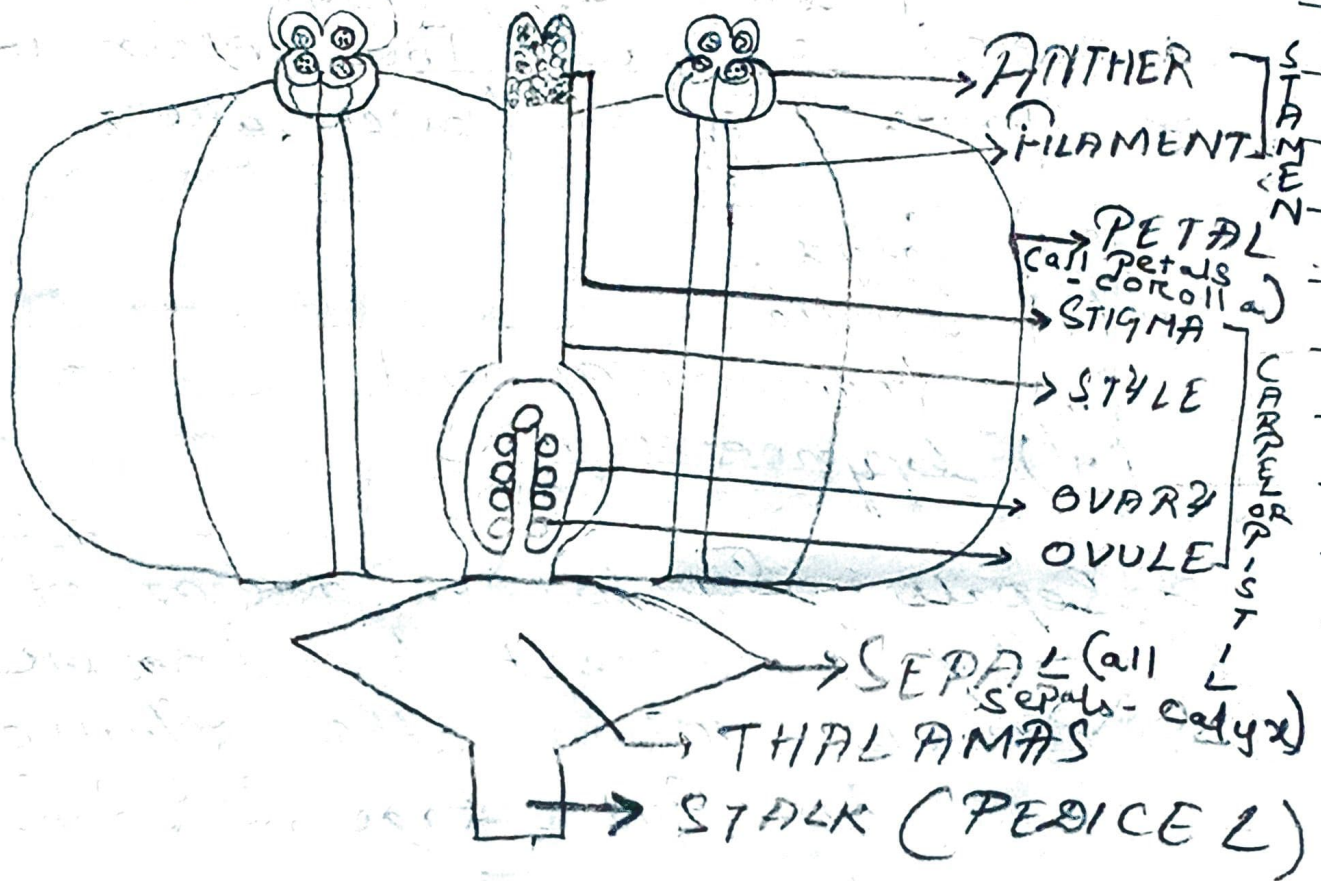
② What is tissue culture?
How is tissue beneficial for gardeners?

Ans Tissue culture is a type of artificial vegetative reproduction in which the tissue of the plant is involved for reproduction process. Here, the tissues are taken in a particular nutrient medium after which they divide into group cells, they are added chemicals so that microorganisms couldn't harm them.

• It is beneficial for gardeners because they can keep good care of the tissues because their work is gardening. It also a sure and fast method of reproduction.

FLOWER DIAGRAM

3)



A TYPICAL FLOWER
WITH ITS INTERNAL
PARTS