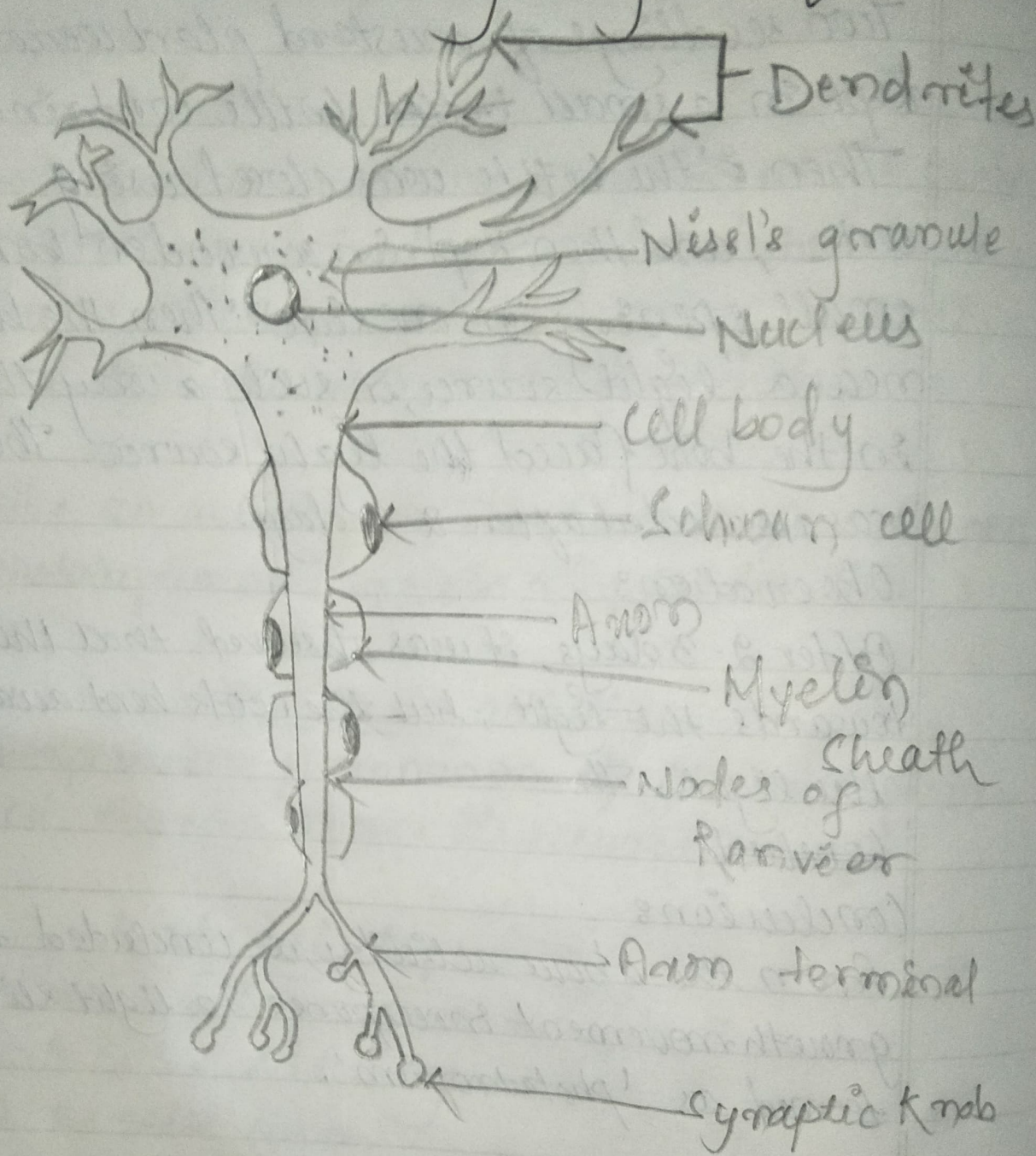
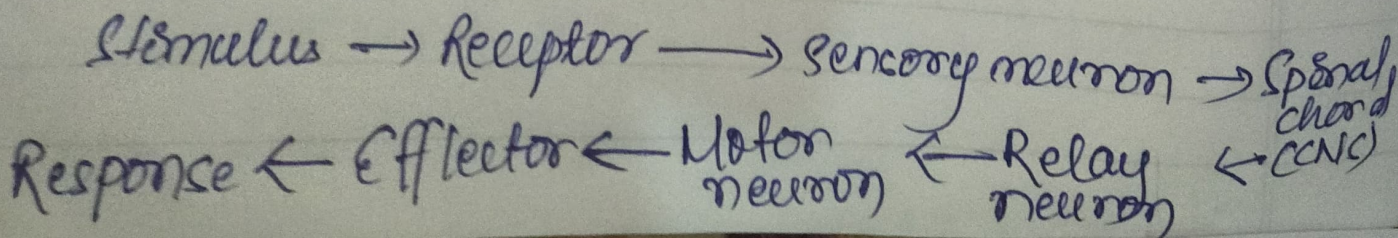


(1) Draw a well labeled diagram of neurons.



(2) Trace the pathway of impulse conduction in your body.

The pathway along which the impulse conduction occurs is -





Q3) What is reflex action? Give its significance.

Reflex action is a rapid automatic response to a stimulus which is not under the voluntary control of the brain.

Significance of Reflex action is:

- It allows to protect us from sudden stimulus which may ~~be~~ harmful.

Q4) Classify neurons on the basis of their neurites.

On the basis of neurites neurons are classified into

(i) Unipolar neuron - They have only one axon.

(ii) Bipolar neuron - They have an axon and one dendrite.

(iii) Multipolar neuron - They have multiple dendrites and a single axon.