

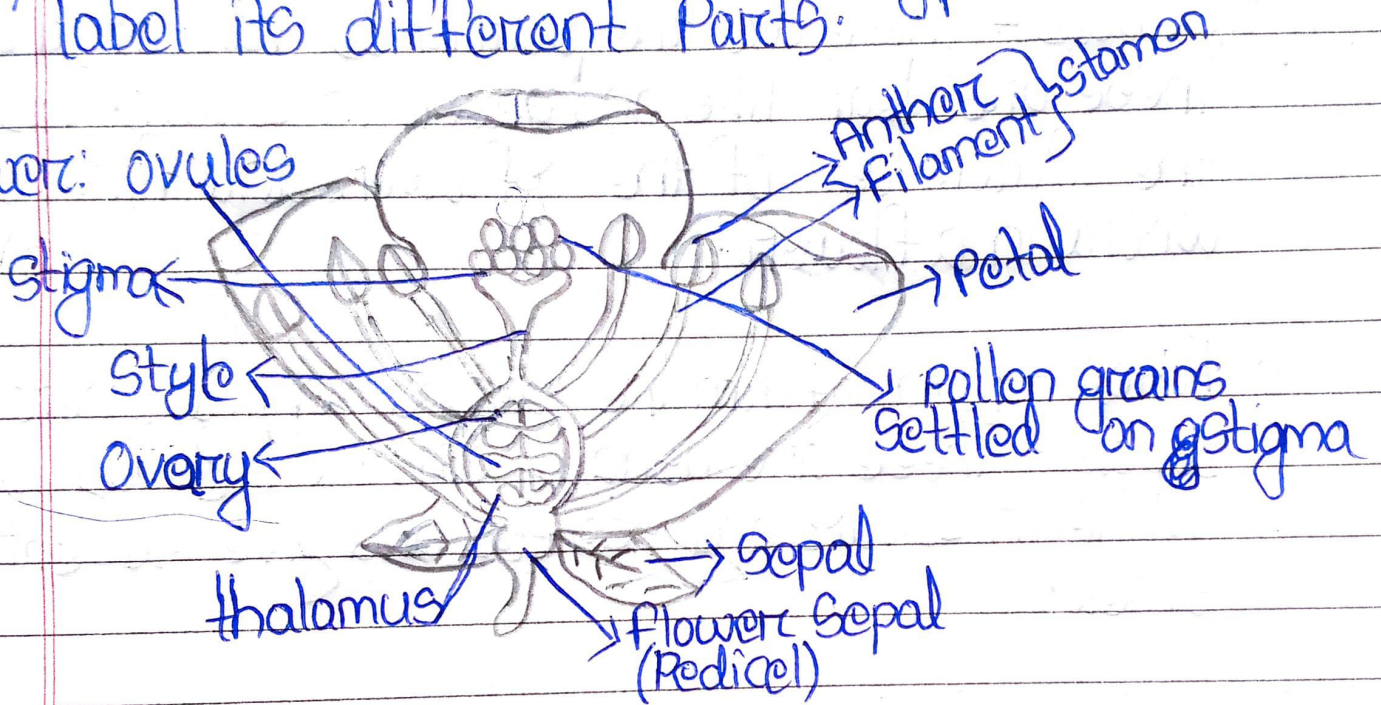
H.W

Flower-2

Surya Narayan Mohanty

Q3) What is a flower? Draw a typical flower and label its different parts.

Answer: ovules



Flower is the reproductive part of an angiospermic plant. Flower has following parts:

Pedicel: It is the stalk of a flower. **Calyx or Sepals:**

The outermost covering or whorl of a flower is called Calyx and its units are called Sepals.

Corolla or petals: Next to Calyx and its units are called Sepals. **Corolla or Stamen:** It forms the

male reproductive parts of the flower. Each stamen has a long filament and a terminal anther. Anther contains the pollen grains. **Carpel** of the flower. Each Carpel or pistil consists of

three parts which are stigma, style and a basal swollen part called ovary.

8) a) Sepals - These are the outermost part of the flower. These are leaf-like and green in colour. This is the outermost of the flower and forms the outer whorl in a flower.

b) Petals - Petals form the second whorl inner to the sepals. These are usually coloured gaudy, or white in colour and scented and give sweet smell.

c) Anther - It is present at the end of a stamen. Anther has pollen sacs in which pollen grains are formed. Pollen grains contain the male gametes.

d) Stigma - It is the terminal knob-like part, it may be divided into two or more lobes and assume a feathery appearance.

(9)

