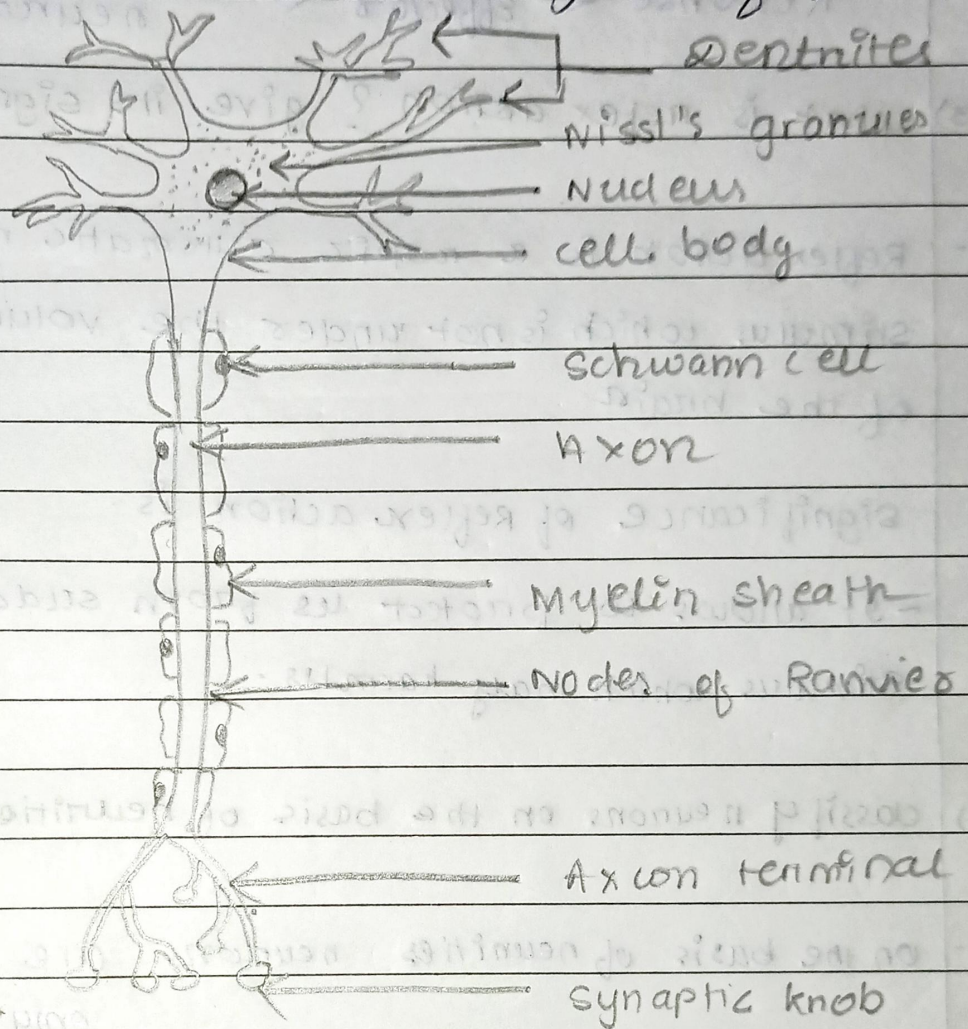


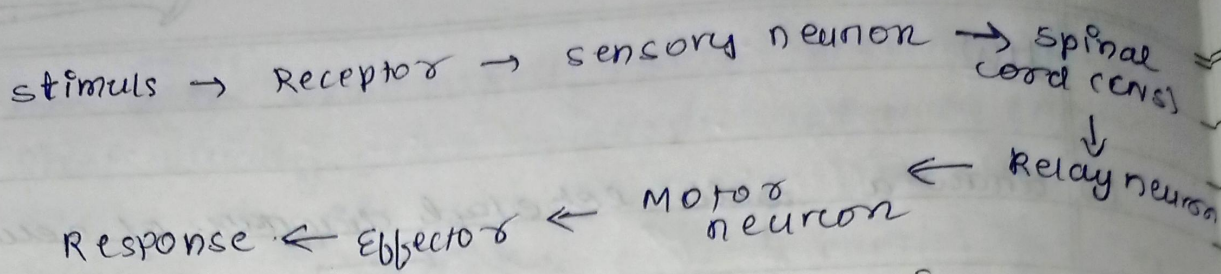
HW

(1) draw a well labeled diagram of neurons.



(2) Trace the pathway of impulse conduction in your body.

ans. The pathway along which the impulse conduction occurs is -



what is reflex action? give its significance.

Reflex action is a rapid automatic response to a stimulus which is not under the voluntary control of the brain.

significance of reflex action is.

- It allows to protect us from sudden ~~harmful~~ stimulus which may harm us.

classify neurons on the basis of neurites

on the basis of neurites neurons are classified into

- (i) Unipolar neuron - They have ^{only} one axon ~~and~~ ~~one dendrite~~.
- (ii) Bipolar neuron - they have an axon and one dendrite.
- (iii) Multipolar neuron - They have multiple dendrites and a single axon.