

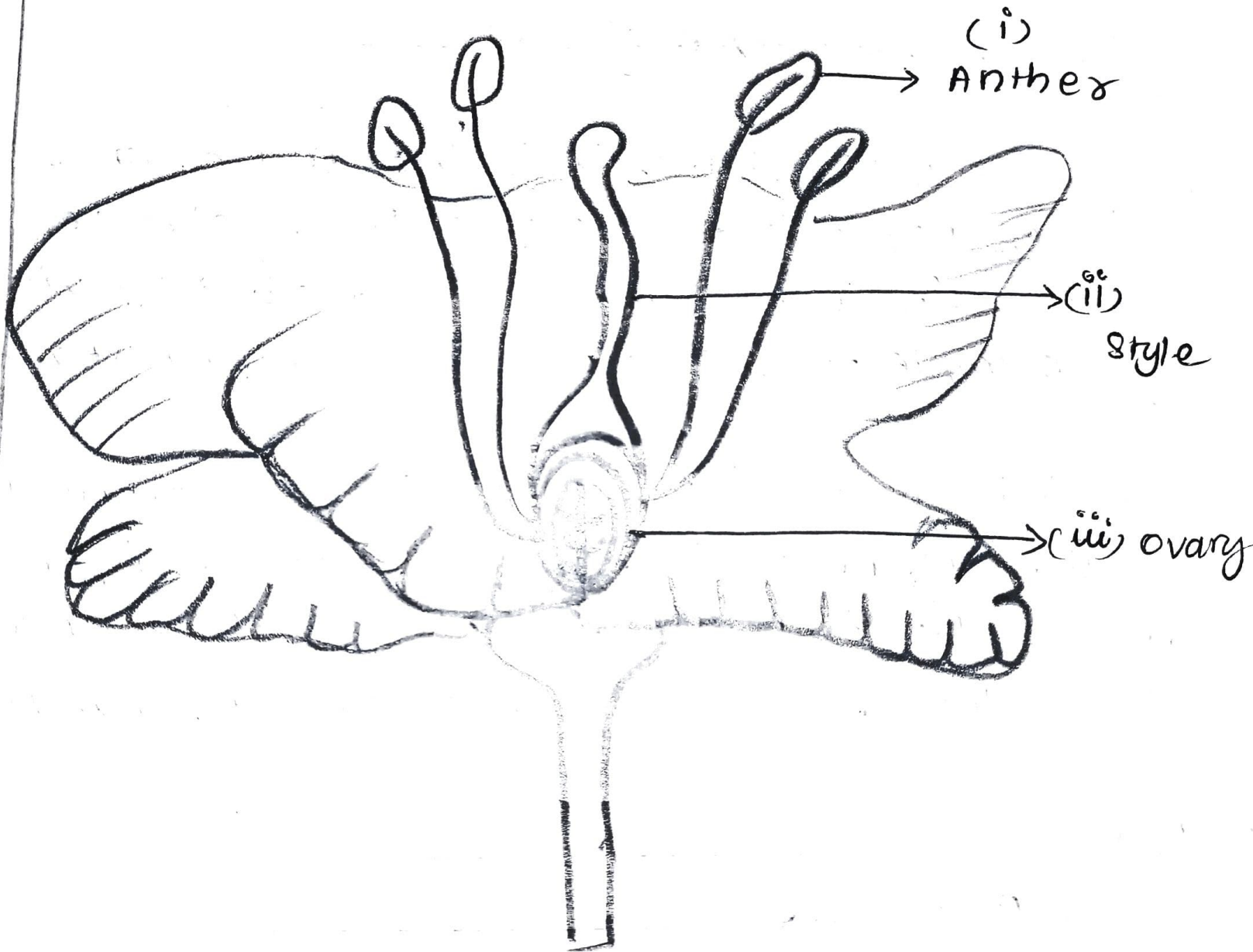
HW

(1) Define the term unisexual and bisexual giving one example of each.

ans. organisms which have both the male and female reproductive organ in a single individual are known as bisexual organisms for examples - plant of hibiscus, mustard.

organisms which have either of the male or female reproductive organs in a single individual are called as unisexual organism for examples - papaya and watermelon.

(Q2) Draw a longitudinal section of flower and label



(Q3) MCA's

(1) (a) Bisexual

(2) (c) carpels

(3) (d) continue the species generation of σ_1 generation

(4) (d) Androecium.