

3. (a) Radicle and plumule

The radicle develops into a root which plumule develops to a shoot.

(b) Hilum and micropyle

Hilum is the inner concave side of the seed where the ~~root~~ seed was attached to a fruit wall.

Micropyle is a hole which allows necessary water for germination.

(c) Testa and Tegmen

Testa is the outer exposed part of the seed coat, whereas tegmen is a thick membrane and lies under the testa. It is the inner part of the seed coat.

4. (i) The two functions of fruit are

→ It protects the seed from the unfavourable environmental conditions.

→ Fruits store food inside them.

10. Name the part of the seed from which the following are given out.

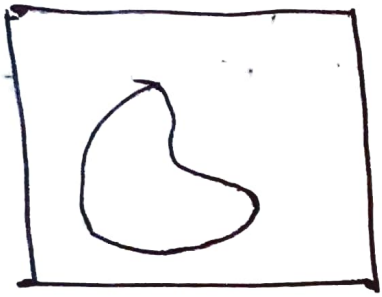
(a) Roots: Radicles ✓

(b) Leaves: Plumule

11. In the space provided below draw a labelled diagram to show the three stages in the germination of any seed you have observed.

✓ Verified
Mausum Nath

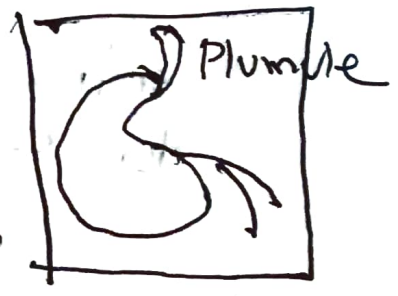
Q11



Complete seed

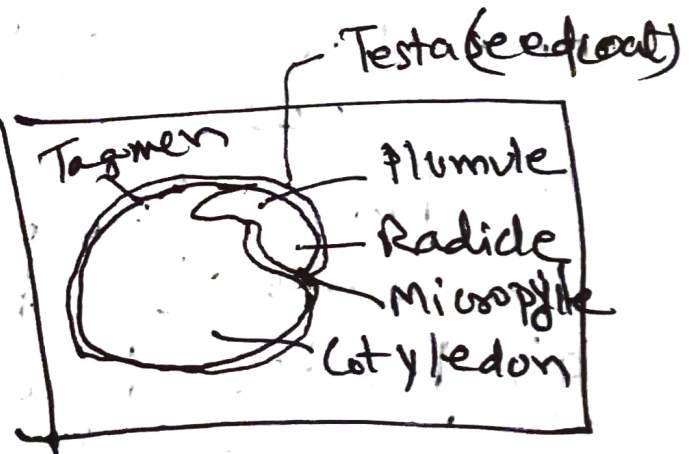
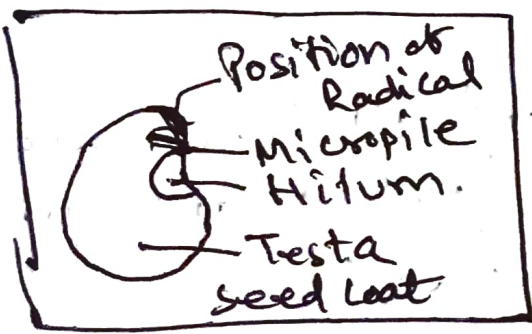


Radicle emerged



Plumule emerged

Q4



Bean Seed