

9. What is a flower? Draw a typical flower and label its different parts.

Ans. A flower is the most beautiful and colourful part of a plant which serves as a reproductive organ.

8. State the location of the following in a flower.

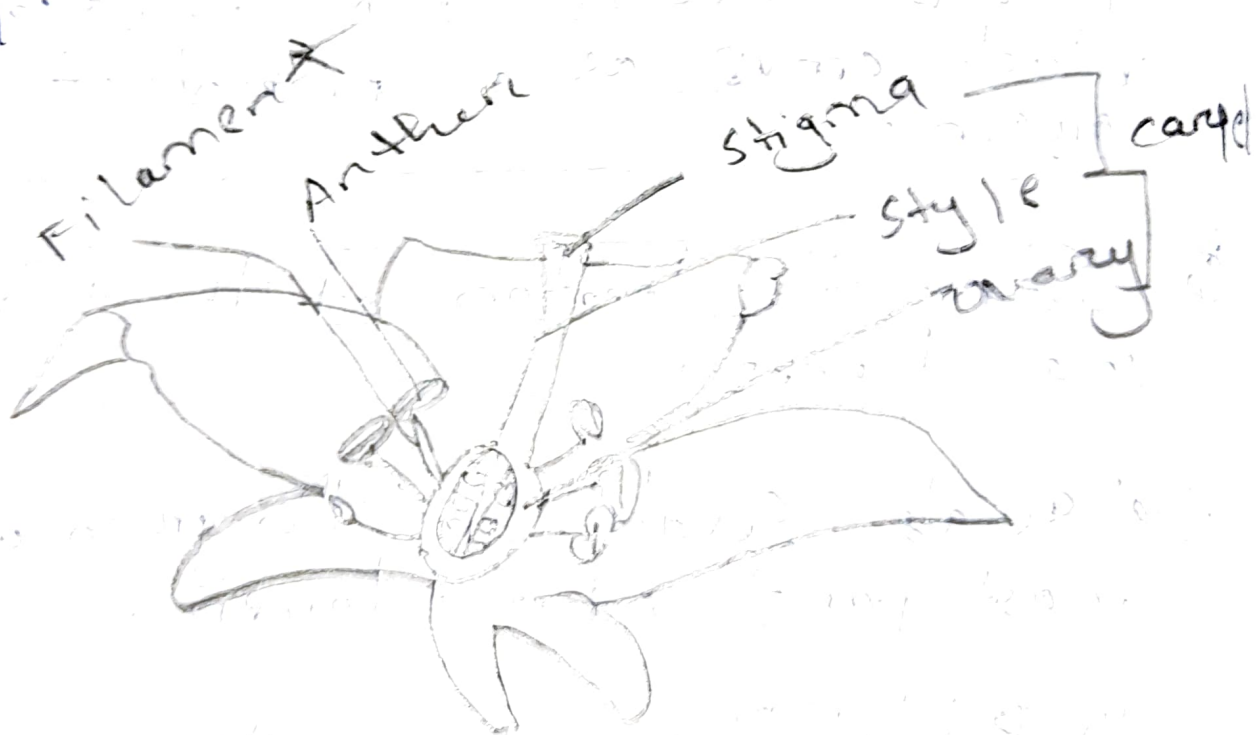
(a) (a) Sepals: Sepals are the green outermost part of a flower.

(b) Petals: This forms the second inner whorl. Petals are large and fragrant and brightly coloured parts.

(c) Anthers: It is located in the inner third whorl of the flower. The filament of the stamen bears the anther at its tip.

Stigma: It is located in the fourth and the innermost whorl of the flower. The style bears the stigma.

9.



Q3.

Diagram of  
Q. no. 3

