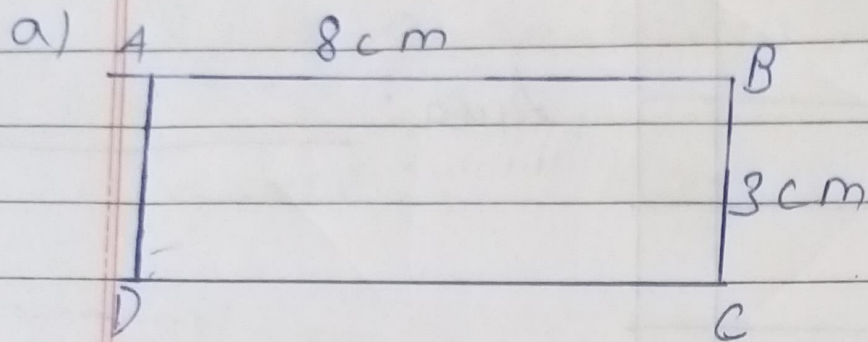


Ex-14 (A)

1. Find the perimeter of the figures given below.



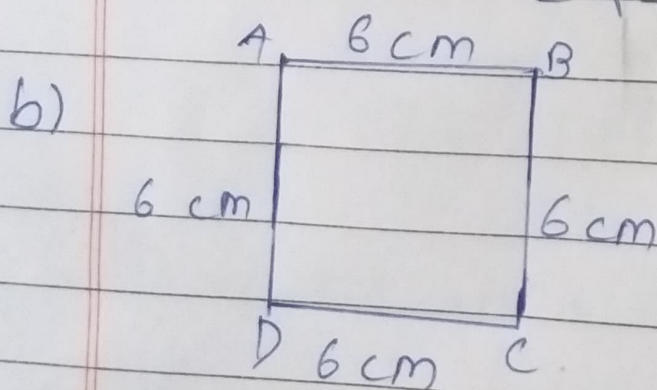
Length = 8 cm

Breadth = 3 cm

Perimeter =  $2 \times (\text{Length} + \text{Breadth})$

$= 2 \times (8 + 3) \text{ cm}$

$= 2 \times 11 = 22 \text{ cm}$

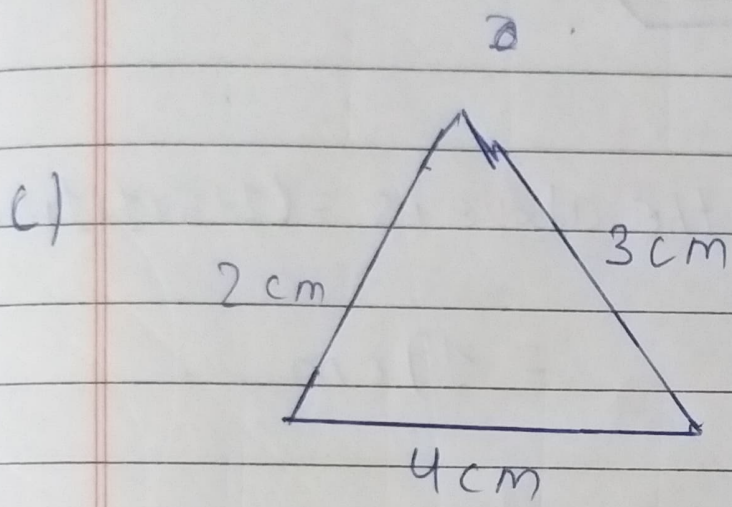


Length of a

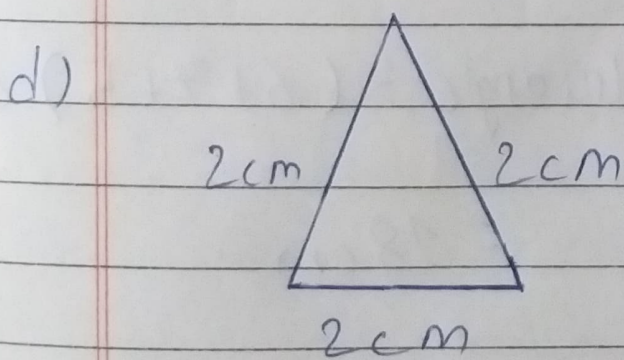


Length of a side = 6 cm

⊙ Perimeter =  $4 \times$  (Length of one side)  
 $= 4 \times 6 = 24 \text{ cm}$



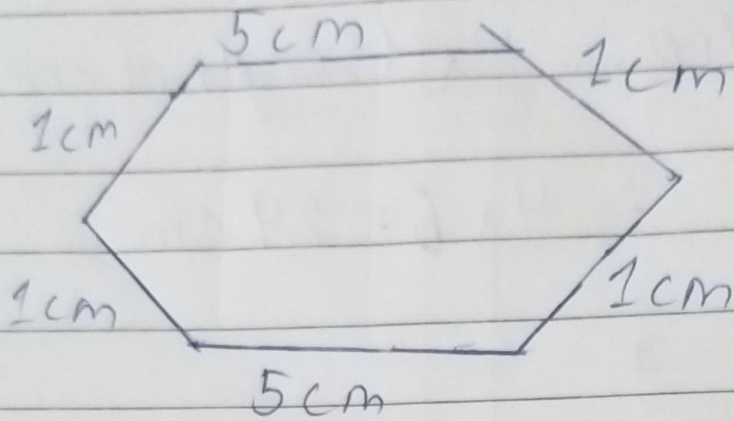
Perimeter of a triangle =  $(2 + 3 + 4) \text{ cm}$   
 $= 9 \text{ cm}$



Perimeter of triangle =  $(2 + 2 + 2) \text{ cm}$

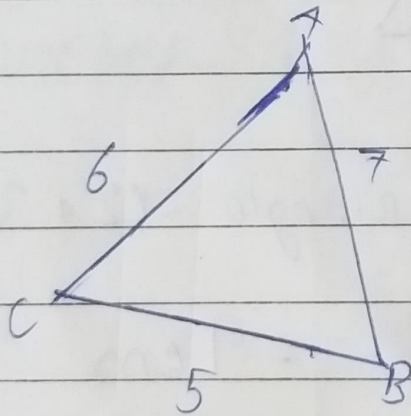
$$= 6 \text{ cm}$$

e)



Perimeter of the above is  $= (1+5+1+1+5+1)$   
 $= 19 \text{ cm}$

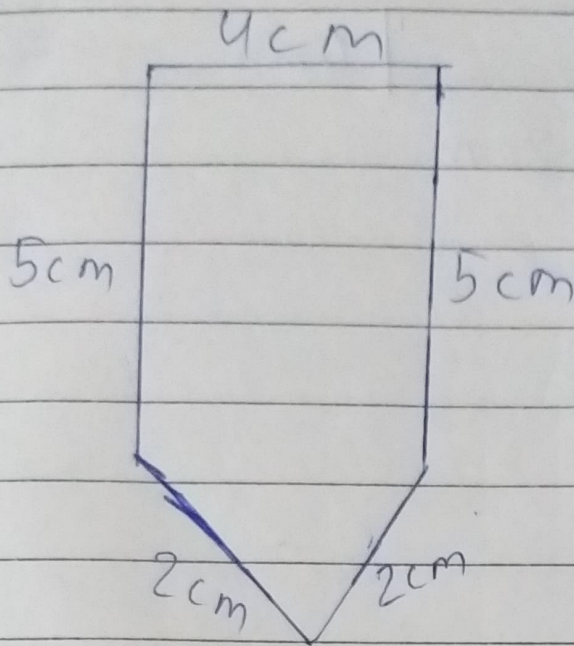
f)



Perimeter of the triangle  $= (6+7+5) \text{ cm}$   
 $= 18 \text{ cm}$

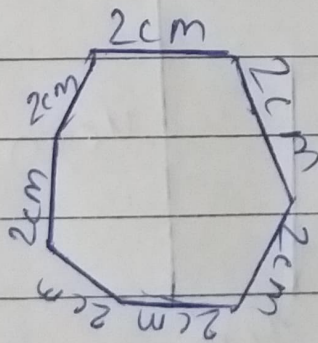


g)

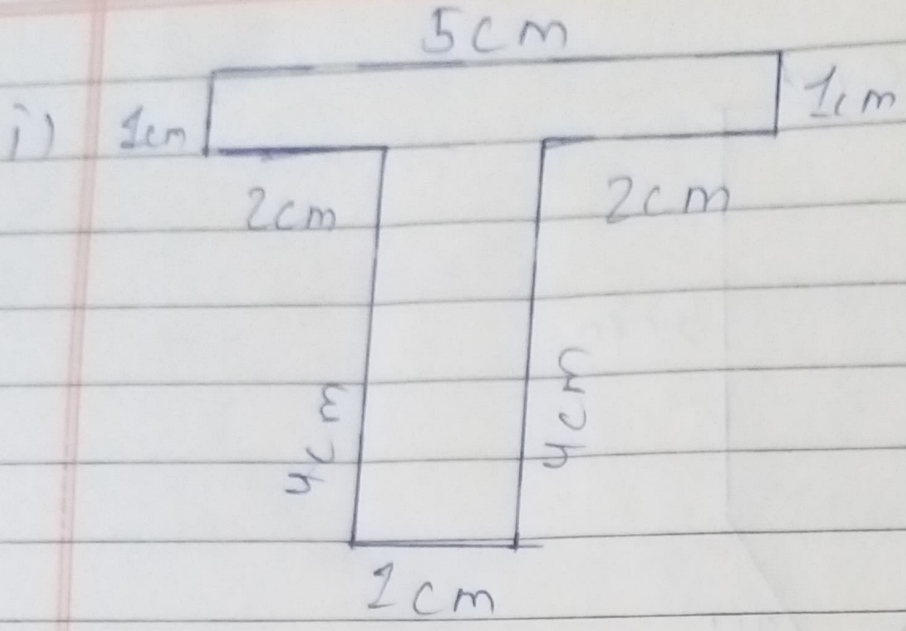


perimeter of the above is  $= (5+4+5+2+2) \text{ cm}$   
 $= 18 \text{ cm}$

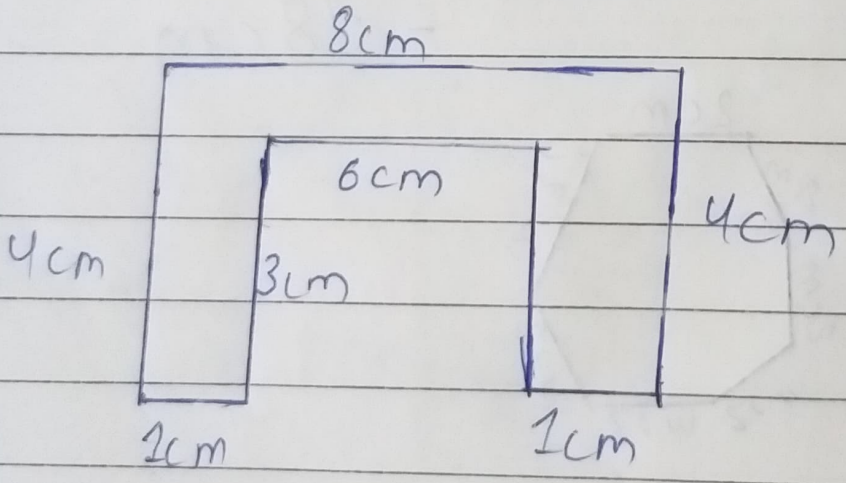
h)



Perimeter of the above is  $= 8 \times (\text{length of one side})$   
 $= 8 \times 2 = 16 \text{ cm}$



Perimeter of above is =  $(1 + 5 + 1 + 2 + 2 + 4 + 4 + 1)$  cm  
 $= 20$  cm



Perimeter of above is =  $(4 + 8 + 4 + 1 + 1 + 3 + 6)$  cm  
 $= 27$  cm