

HW  
04.06.21

Exercise

SAQ

Q 3. Differentiate

a) Radicle and plumule

Radicle ~~is~~ develops to the roots whereas Plumule develops to the shoot system.

b) Hilum and micropyle

Hilum mark the place where the seed was attached to the fruit wall but micropyle is a small passage which helps ~~the~~ to absorb water for germination

c) Testa and tegmen

The outer part of the seed coat is the testa and inner thin part is the tegmen.

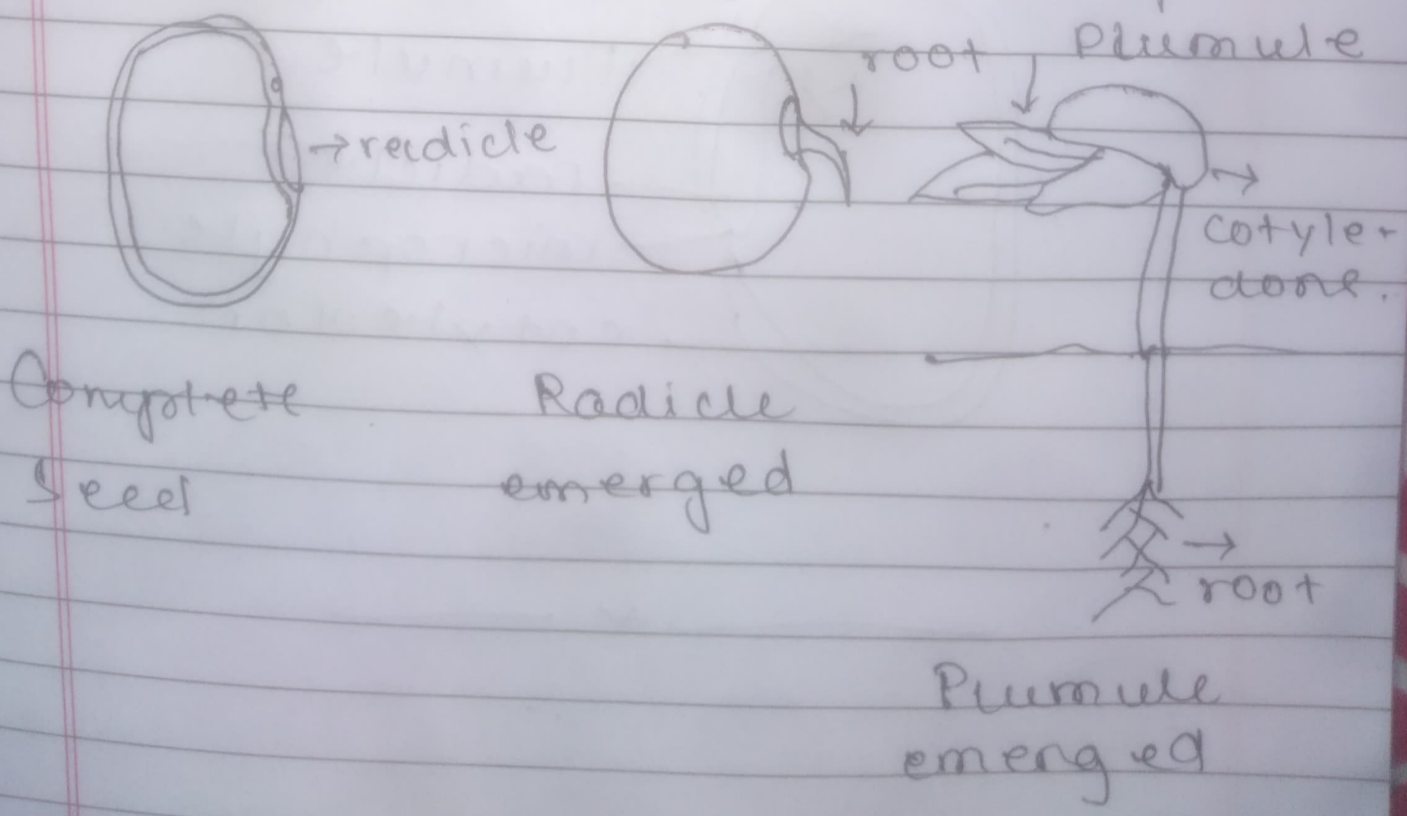
Q4 2 function of fruit

- ① Fruits stored food inside them.
- ② It protects seeds from the unfavorable environmental condition.

Q10. Part of seed, from where the following emerged.

- a) roots: Radicle
- b) Leaves: Plumule

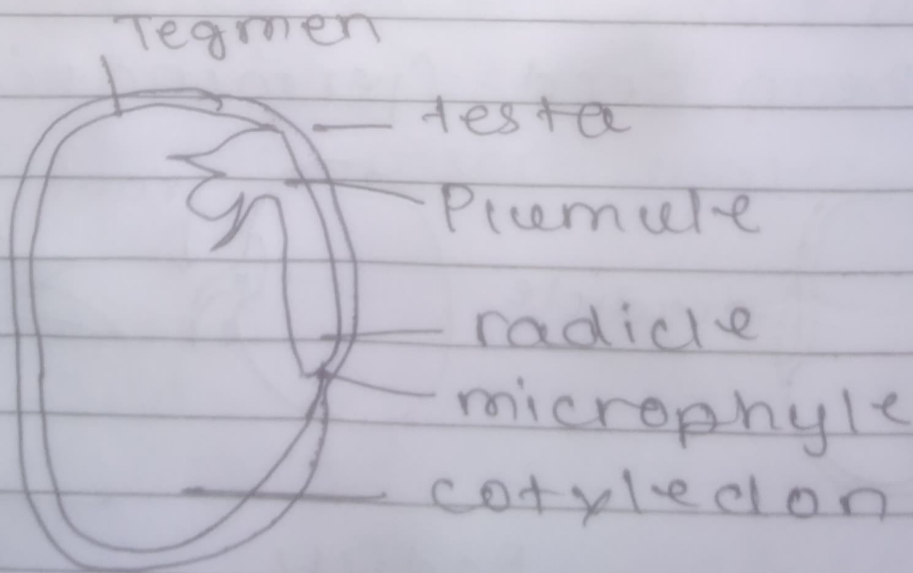
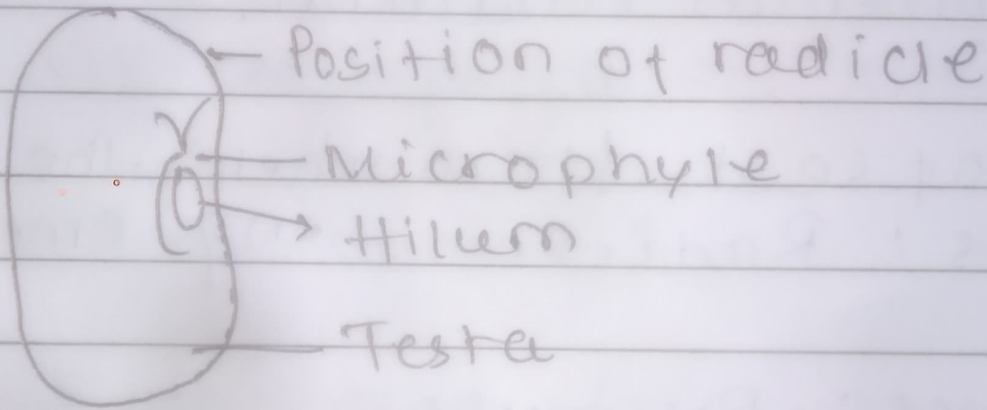
Q11. Bean seed Germination process



(LAQ)

Q4.

Dicot seed structure (Bean)



~~~~~\*~~~~~